

**FOR LEASE**

# Goldenwest Business Park

7300-7404 Bolsa Ave & 15132-15192 Goldenwest Circle  
Westminster, CA



**±231,250 SF**



**CONTACT US**

**Brad Bierbaum** (714) 371-9210 / [brad.bierbaum@cbre.com](mailto:brad.bierbaum@cbre.com) / Lic. 00996170  
**Ryan Peterson** (714) 371-9212 / [ryan.peterson@cbre.com](mailto:ryan.peterson@cbre.com) / Lic. 01336025





**PROFILE**



**AVAILABILITY**

**7346 Bolsa Avenue**

Size: 4,506 SF

Rate: \$2.00 Modified Gross

Description: Front reception, 1 large private office, kitchenette, 2 private restrooms, warehouse with 1 large GL door

**7300 Bolsa Avenue**

Size: 12,307 SF

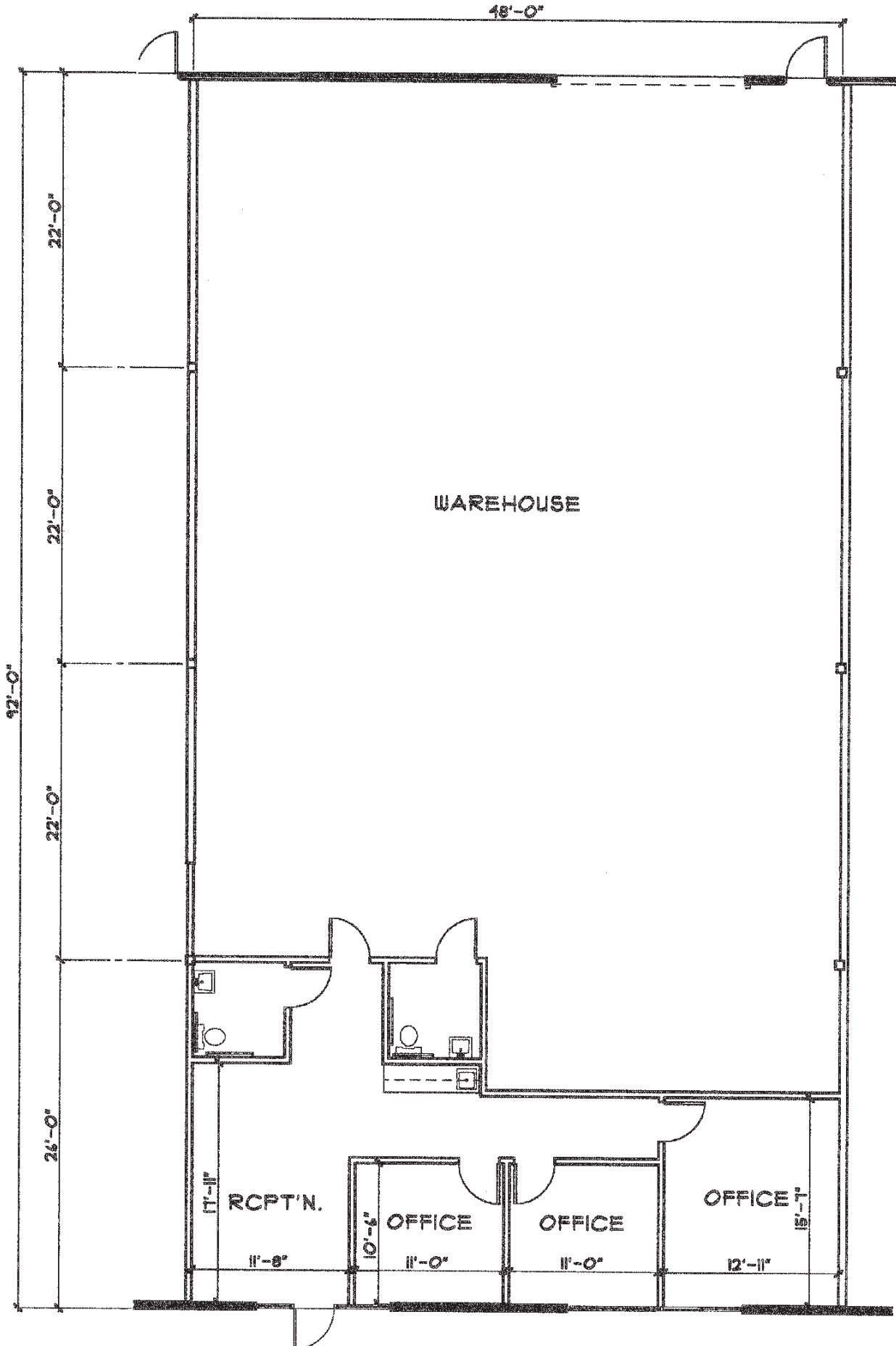
Rate: \$TBD Modified Gross

Description: Approx 4,500 SF two-story office area, front reception, conference room, 6 private offices, open office area on first and second floor, 2 private restrooms, 18' Clear, warehouse with 2 GL doors

**PROPERTY PROFILE**

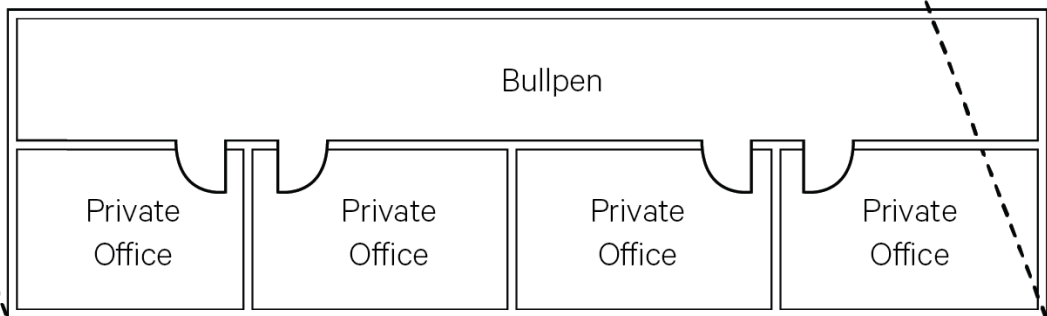
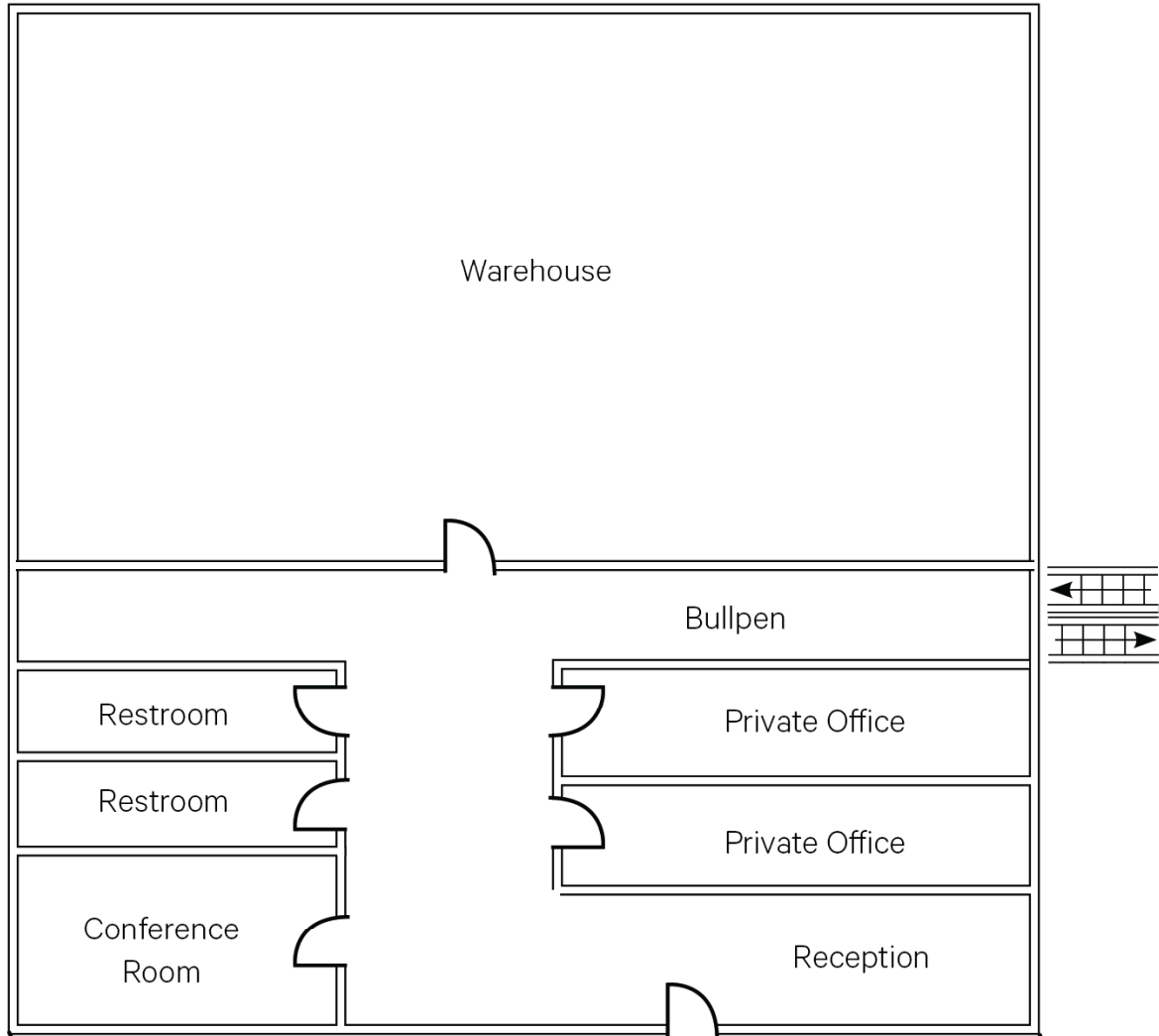
<b>Address</b>	7300-7404 Bolsa Avenue & 15132-15192 Goldenwest Circle Westminster, CA
<b>Total SF</b>	±231,250 SF
<b>Land Size</b>	±12.63 Acres
<b>Zoning</b>	M-2 (Medium Industrial)
<b>Year Built</b>	1967-1969
<b>Clear Height</b>	14-20 Feet
<b>Parking Ratio</b>	2:1,000
<b>Power</b>	100-400 Amps; 120/240 Volts
<b>GL Doors</b>	1-2 GL Doors per Unit

**7346 Bolsa**



**7300 BOLSA**

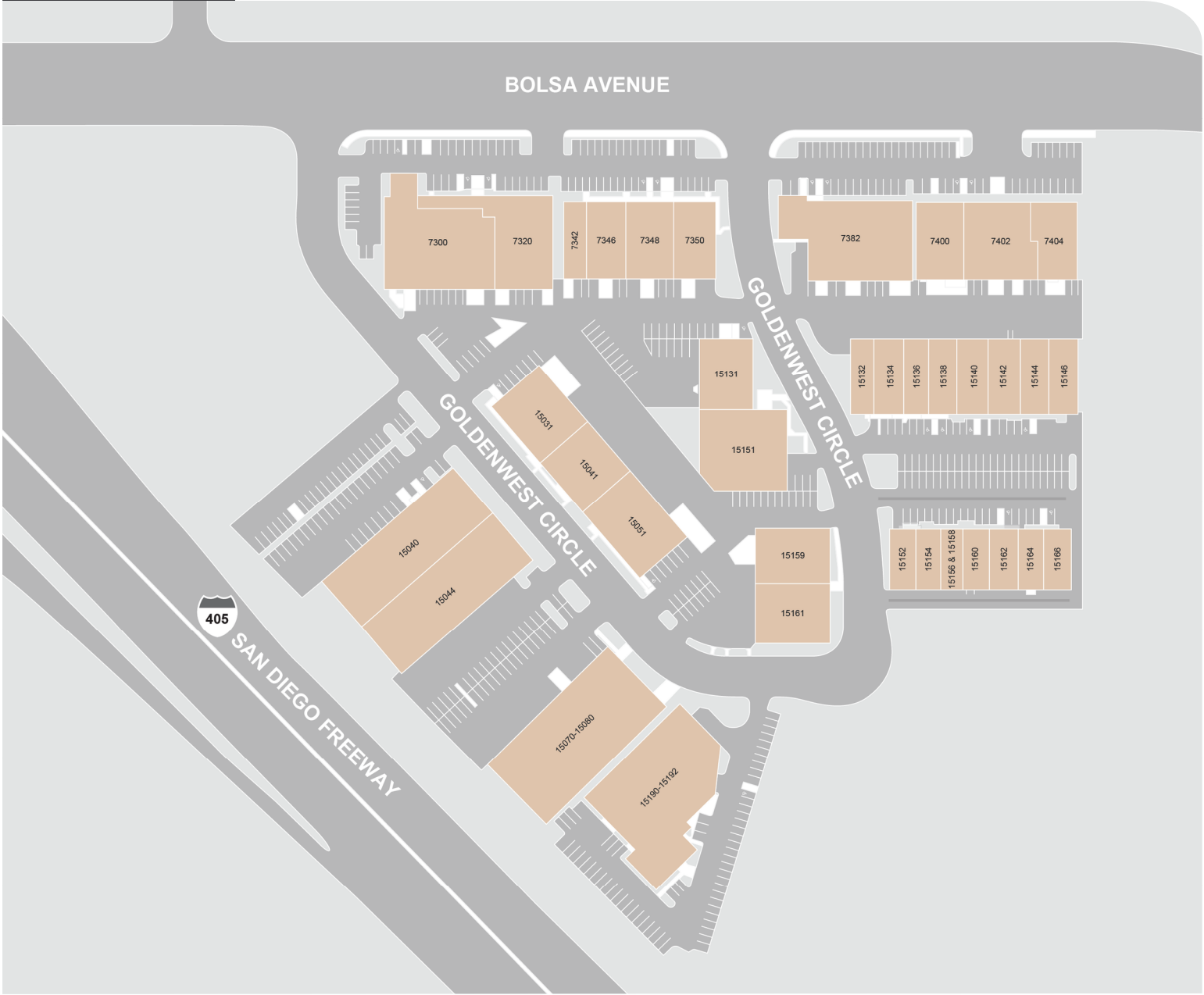
**FIRST FLOOR**



**SECOND FLOOR**

Not to Scale

# SITE PLAN





**PHOTOS**

