



20 & 30 ENTERPRISE, ALISO VIEJO

THE CASCADES AT SUMMIT

A PLACE TO REFRESH, REENERGIZE
+ REIGNITE YOUR BUSINESS

CBRE



THE CASCADES

@ SUMMIT



Availabilities

20 Enterprise	SF	Availability	Virtual Tour	Description
Suite 200*	31,316	Immediate		Move in ready full floor spec suite available now, divisible to 6,694 RSF, 9,100 RSF, 15,213 RSF. Building-top signage available.
Suite 330	7,439	Immediate		Creative office space, exposed ceilings, reception area, large conference room, 8 private offices, open kitchen, IT/storage room and open area for workstations.
Suite 375	4,645	Immediate		Reception area, open kitchen, 2 conference rooms, 7 private offices, open area for workstations and IT/storage room.
30 Enterprise	SF	Availability	Virtual Tour	Description
Suite 110	3,552	Available with 60 Days Notice		Double door entry off group floor, 1 conference room, 1 office, open kitchen and open area for workstations.

Contacts:

Carol Trapani

Senior Vice President
Lic. 01099644
+1 949 725 8603
carol.trapani@cbre.com

Allison Kelly

Senior Vice President
Lic. 01417664
+1 949 725 8474
allison.kelly@cbre.com

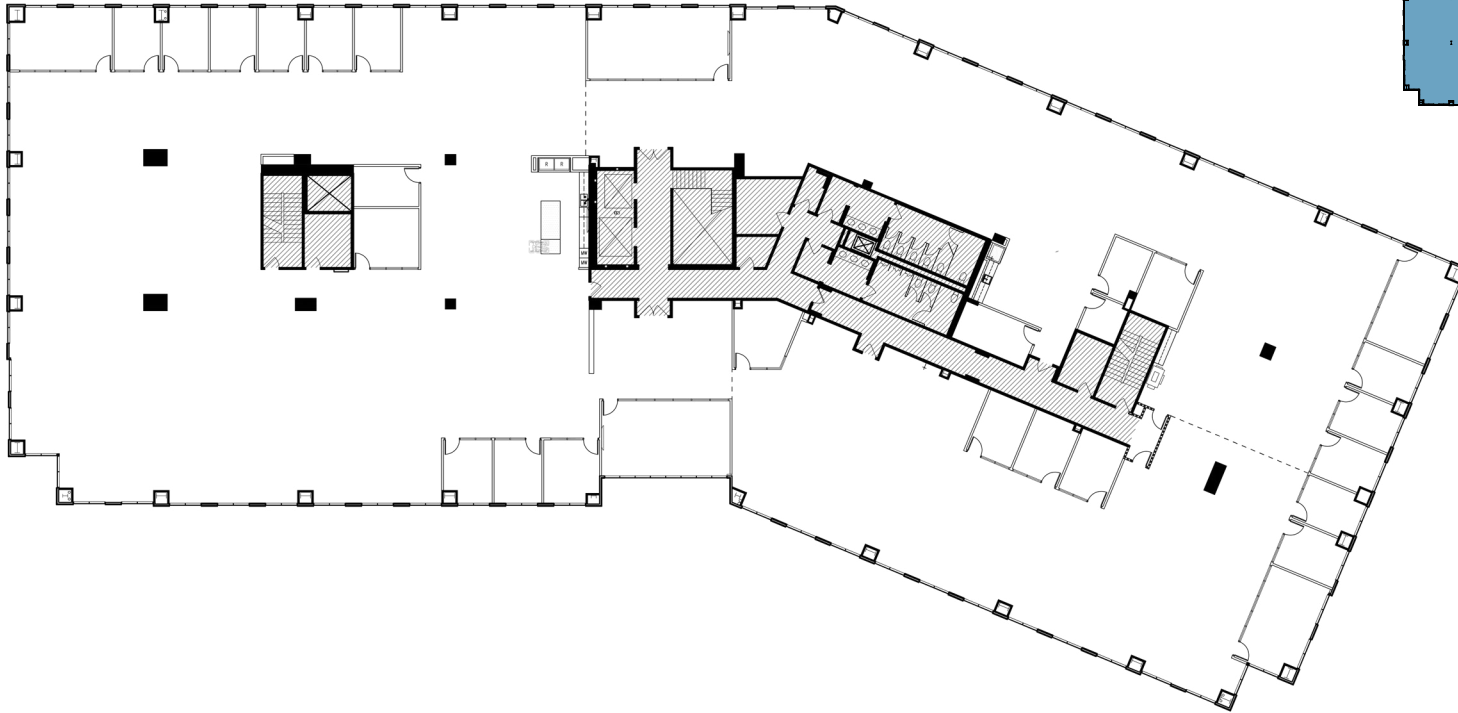
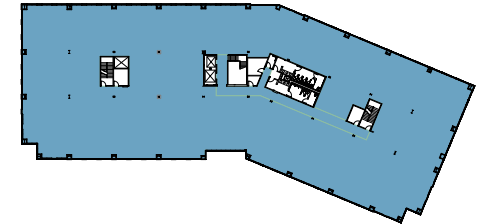


© 2024 CBRE, Inc. All rights reserved. This information has been obtained from sources believed reliable, but has not been verified for accuracy or completeness. You should conduct a careful, independent investigation of the property and verify all information. Any reliance on this information is solely at your own risk. CBRE and the CBRE logo are service marks of CBRE, Inc. All other marks displayed on this document are the property of their respective owners. Photos herein are the property of their respective owners and use of these images without the express written consent of the owner is prohibited.

**THE
CASCADES**
@ SUMMIT

20 Enterprise Floor Plan

Suite 200
31,316 SF



Contacts:

Carol Trapani

Senior Vice President
Lic. 01099644
+1 949 725 8603
carol.trapani@cbre.com

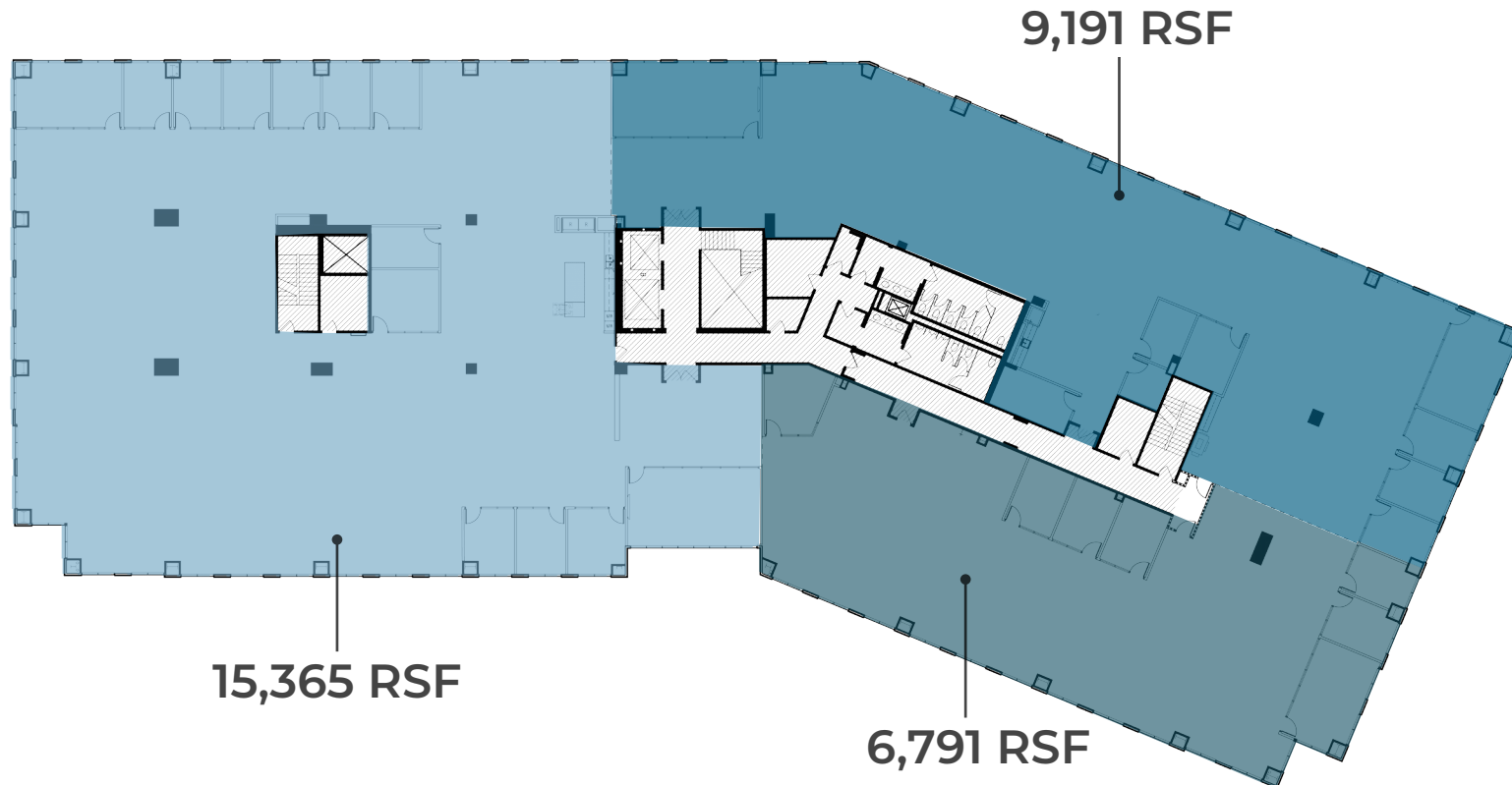
Allison Kelly

Senior Vice President
Lic. 01417664
+1 949 725 8474
allison.kelly@cbre.com



© 2024 CBRE, Inc. All rights reserved. This information has been obtained from sources believed reliable, but has not been verified for accuracy or completeness. You should conduct a careful, independent investigation of the property and verify all information. Any reliance on this information is solely at your own risk. CBRE and the CBRE logo are service marks of CBRE, Inc. All other marks displayed on this document are the property of their respective owners. Photos herein are the property of their respective owners and use of these images without the express written consent of the owner is prohibited.

2nd Floor Demising Options



Contacts:

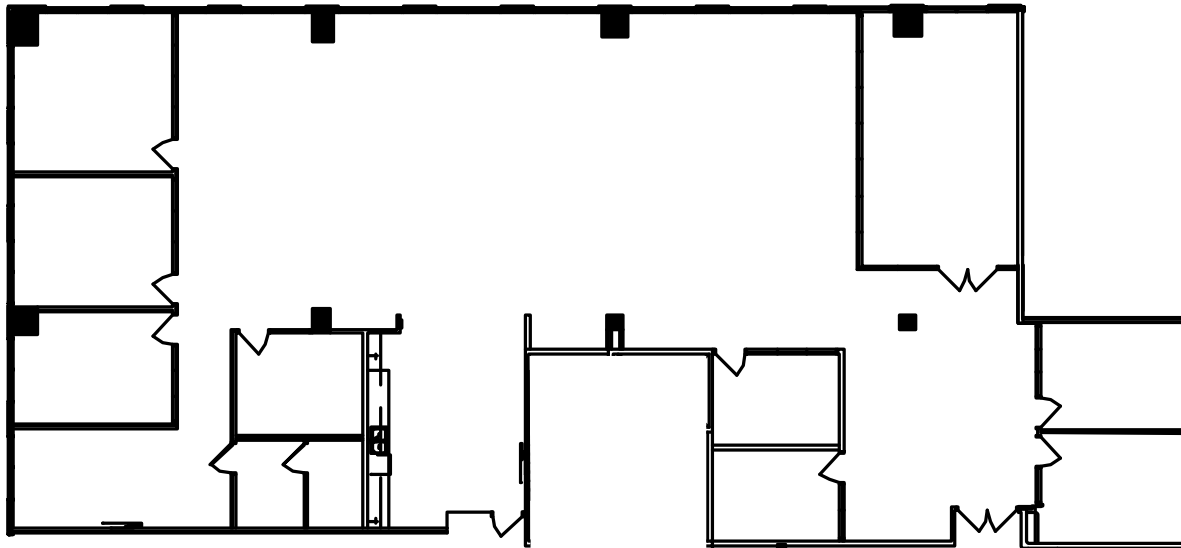
Carol Trapani

Senior Vice President
Lic. 01099644
+1 949 725 8603
carol.trapani@cbre.com

Allison Kelly

Senior Vice President
Lic. 01417664
+1 949 725 8474
allison.kelly@cbre.com





Contacts:

Carol Trapani

Senior Vice President
Lic. 01099644
+1 949 725 8603
carol.trapani@cbre.com

Allison Kelly

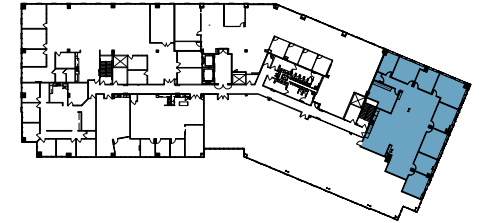
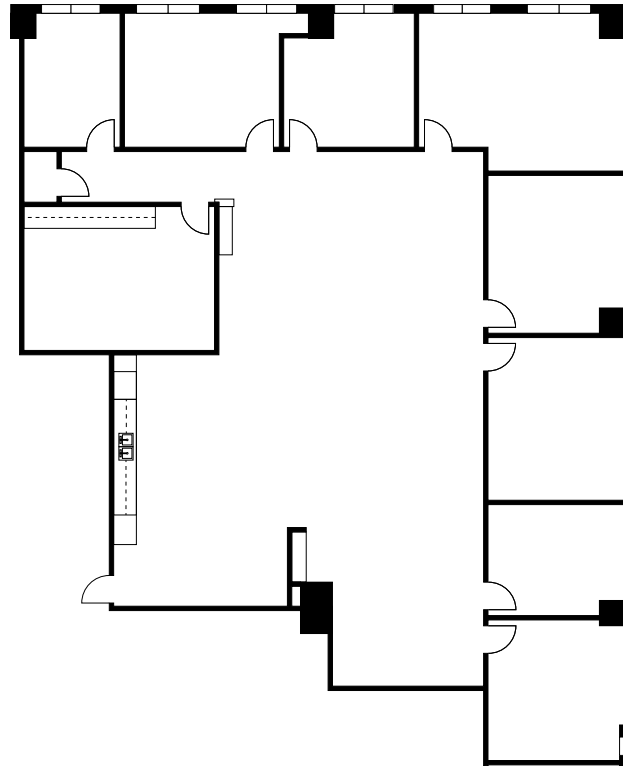
Senior Vice President
Lic. 01417664
+1 949 725 8474
allison.kelly@cbre.com



THE
CASCADES
@ SUMMIT

20 Enterprise Floor Plan

Suite 375
4,645 SF



Contacts:

Carol Trapani

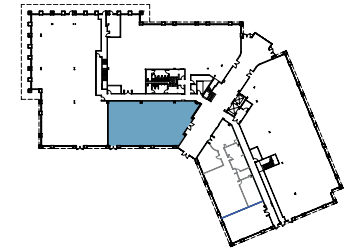
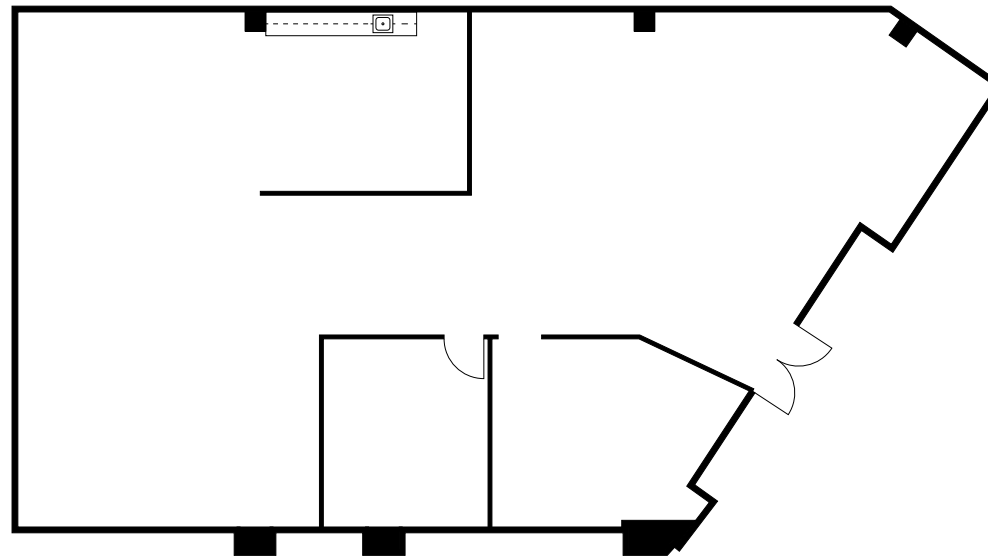
Senior Vice President
Lic. 01099644
+1 949 725 8603
carol.trapani@cbre.com

Allison Kelly

Senior Vice President
Lic. 01417664
+1 949 725 8474
allison.kelly@cbre.com



© 2024 CBRE, Inc. All rights reserved. This information has been obtained from sources believed reliable, but has not been verified for accuracy or completeness. You should conduct a careful, independent investigation of the property and verify all information. Any reliance on this information is solely at your own risk. CBRE and the CBRE logo are service marks of CBRE, Inc. All other marks displayed on this document are the property of their respective owners. Photos herein are the property of their respective owners and use of these images without the express written consent of the owner is prohibited.



Contacts:

Carol Trapani

Senior Vice President
Lic. 01099644
+1 949 725 8603
carol.trapani@cbre.com

Allison Kelly

Senior Vice President
Lic. 01417664
+1 949 725 8474
allison.kelly@cbre.com

