

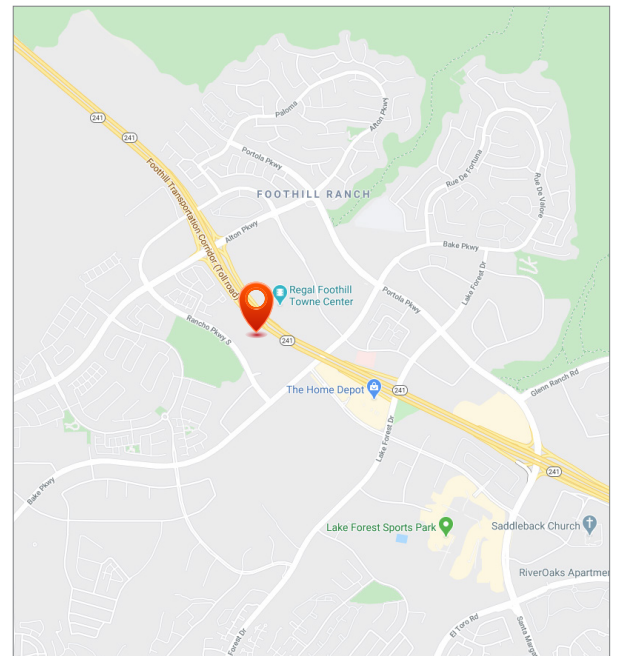
AVAILABLE FOR LEASE

26439 RANCHO PARKWAY, UNIT 165 | LAKE FOREST, CA 92630



LISTING DATA

- High-Image ±1,643 SF office, R&D, and warehouse unit
- ±1,171 SF of single-story office space
- ±472 SF of warehouse
- Excellent signage available along the 241 Hwy
- Ground level loading doors
- 22' minimum warehouse clearance
- 400 amps
- Fire sprinklered
- Built in 2005
- Office features 2 private offices, open area, glass conference room, restroom & coffee bar
- Very flexible zoning allowing for a wide range of uses including retail, office, R&D, and industrial
- Professionally managed Foothill Business Park



For more information, contact:

BJ FELL
Senior Vice President
CalDRE: 01929179
(949) 790-3144
bfell@leeirvine.com

MARK JERUE
Senior Vice President
CalDRE: 01073399
(949) 790-3121
mjerue@leeirvine.com

CRAIG FITTERER
Senior Vice President
CalDRE: 01246929
(949) 790-3123
cfitterer@leeirvine.com

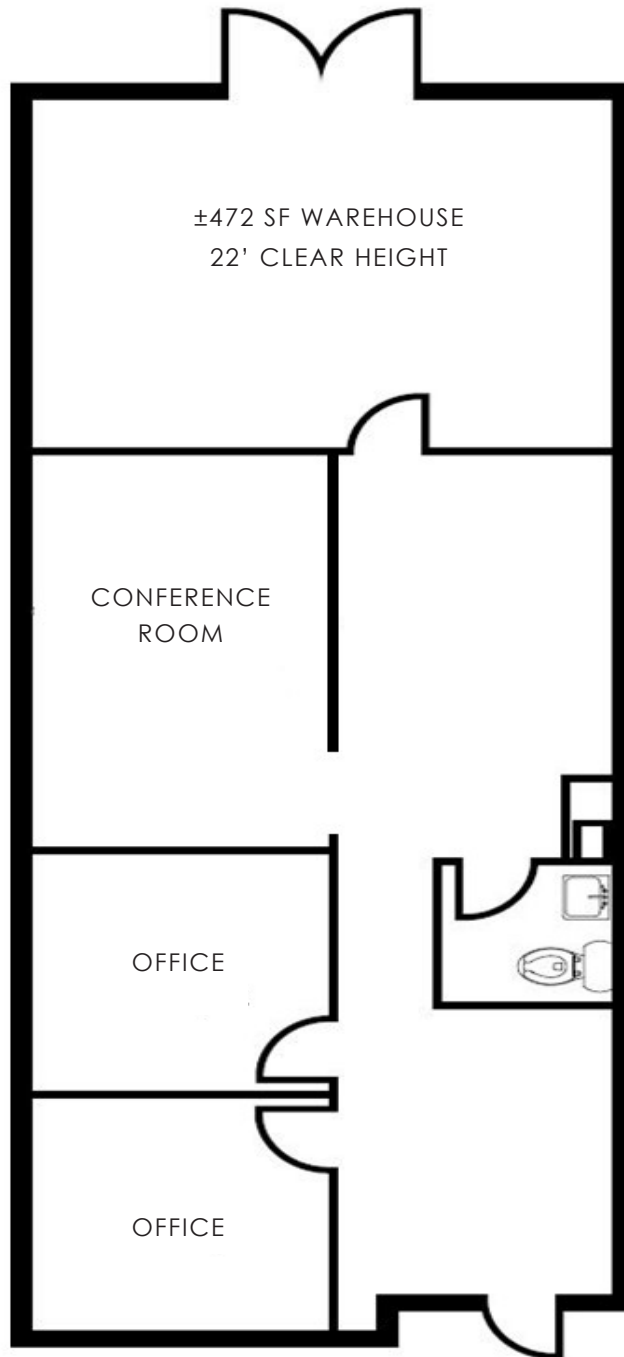
GIANCARLO SPINOSI
Associate
CalDRE: 02065254
(949) 790-3109
gspinosi@leeirvine.com

All information furnished regarding property for sale, rental or financing is from sources deemed reliable, but no warranty or representation is made to the accuracy thereof and same is submitted to errors, omissions, change of price, rental or other conditions prior to sale, lease or financing or withdrawal without notice. No liability of any kind is to be imposed on the broker herein.

AVAILABLE FOR LEASE

26439 RANCHO PARKWAY, UNIT 165 | LAKE FOREST, CA 92630

FLOOR PLAN



For more information, contact:

BJ FELL
Senior Vice President
CalDRE: 01929179
(949) 790-3144
bfell@leeirvine.com

MARK JERUE
Senior Vice President
CalDRE: 01073399
(949) 790-3121
mjerue@leeirvine.com

CRAIG FITTERER
Senior Vice President
CalDRE: 01246929
(949) 790-3123
cfitterer@leeirvine.com

GIANCARLO SPINOSI
Associate
CalDRE: 02065254
(949) 790-3109
gspinosi@leeirvine.com

All information furnished regarding property for sale, rental or financing is from sources deemed reliable, but no warranty or representation is made to the accuracy thereof and same is submitted to errors, omissions, change of price, rental or other conditions prior to sale, lease or financing or withdrawal without notice. No liability of any kind is to be imposed on the broker herein.

AVAILABLE FOR LEASE

26439 RANCHO PARKWAY, UNIT 165 | LAKE FOREST, CA 92630



BJ FELL
Senior Vice President
CalDRE: 01929179
(949) 790-3144
bfell@leeirvine.com

MARK JERUE
Senior Vice President
CalDRE: 01073399
(949) 790-3121
mjerue@leeirvine.com

CRAIG FITTERER
Senior Vice President
CalDRE: 01246929
(949) 790-3123
cfitterer@leeirvine.com

GIANCARLO SPINOSI
Associate
CalDRE: 02065254
(949) 790-3109
gspinosi@leeirvine.com

All information furnished regarding property for sale, rental or financing is from sources deemed reliable, but no warranty or representation is made to the accuracy thereof and same is submitted to errors, omissions, change of price, rental or other conditions prior to sale, lease or financing or withdrawal without notice. No liability of any kind is to be imposed on the broker herein.