

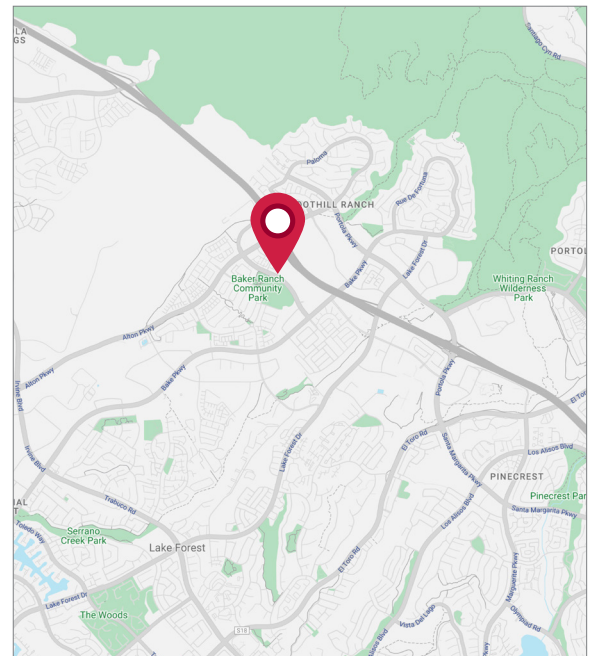
AVAILABLE FOR SALE

26429 RANCHO PARKWAY, UNIT 135 | LAKE FOREST, CA 92630



LISTING DATA

- High Image $\pm 2,689$ SF Two-Story Office, R&D and Warehouse Unit
- $\pm 1,813$ SF Two-Story, Open-Plan Office Space
- ± 876 SF High-Bay Warehouse Area/ ± 280 SF Bonus Mezzanine
- $\pm 22'$ Clear Height
- Fire Sprinklered
- Nine (9) Parking Stalls/3 Reserved
- Natural Light in Both Office and Warehouse Area
- 400 amps/480 Volt
- Excellent Signage Available Along the 241 Corridor $\pm 36,000$ Cars/Day
- Double-door Warehouse Loading
- Immediate Access to the 241 Toll Road via Alton Parkway
- Extremely Flexible Zoning Allows for a Wide Range of Uses Including Retail, Office, R&D and Industrial



For more information, contact:

BJ FELL
Senior Vice President
CalDRE: 01929179
(949) 790-3144
bfell@leeirvine.com

MARK JERUE
Senior Vice President
CalDRE: 01073399
(949) 790-3121
mjerue@leeirvine.com

CRAIG FITTERER
Senior Vice President
CalDRE: 01246929
(949) 790-3123
cfitterer@leeirvine.com

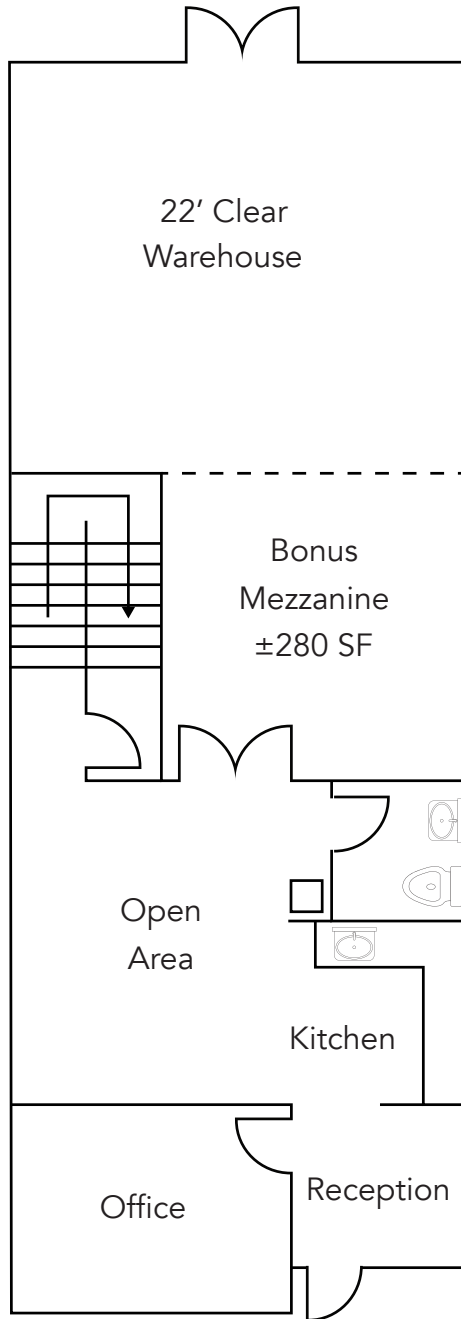
GIANCARLO SPINOSI
Senior Associate
CalDRE: 02065254
(949) 790-3109
gspinosi@leeirvine.com

All information furnished regarding property for sale, rental or financing is from sources deemed reliable, but no warranty or representation is made to the accuracy thereof and same is submitted to errors, omissions, change of price, rental or other conditions prior to sale, lease or financing or withdrawal without notice. No liability of any kind is to be imposed on the broker herein.

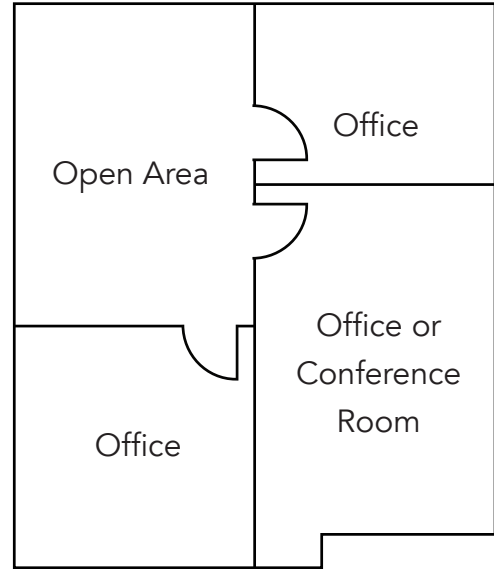
AVAILABLE FOR SALE

26429 RANCHO PARKWAY, UNIT 135 | LAKE FOREST, CA 92630

FLOOR PLAN



1ST FLOOR



2ND FLOOR

For more information, contact:

BJ FELL
Senior Vice President
CalDRE: 01929179
(949) 790-3144
bfell@leeirvine.com

MARK JERUE
Senior Vice President
CalDRE: 01073399
(949) 790-3121
mjerue@leeirvine.com

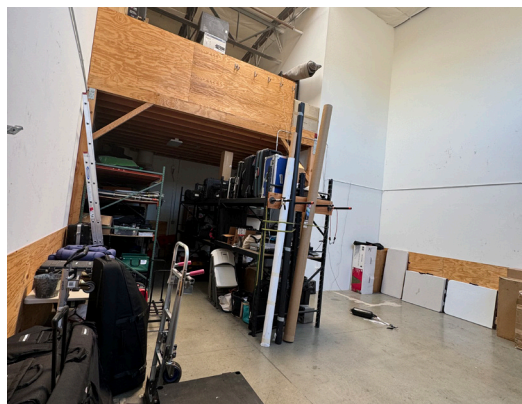
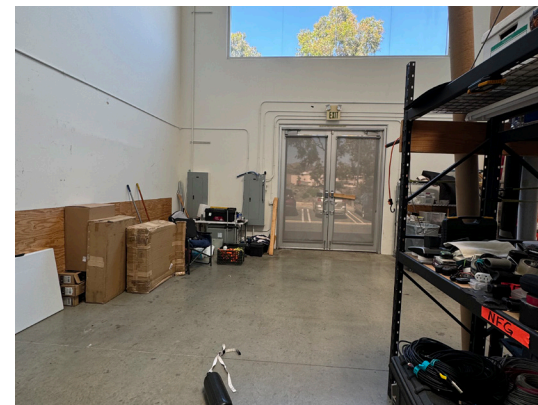
CRAIG FITTERER
Senior Vice President
CalDRE: 01246929
(949) 790-3123
cfitterer@leeirvine.com

GIANCARLO SPINOSI
Senior Associate
CalDRE: 02065254
(949) 790-3109
gspinosi@leeirvine.com

All information furnished regarding property for sale, rental or financing is from sources deemed reliable, but no warranty or representation is made to the accuracy thereof and same is submitted to errors, omissions, change of price, rental or other conditions prior to sale, lease or financing or withdrawal without notice. No liability of any kind is to be imposed on the broker herein.

AVAILABLE FOR SALE

26429 RANCHO PARKWAY, UNIT 135 | LAKE FOREST, CA 92630



BJ FELL
Senior Vice President
CalDRE: 01929179
(949) 790-3144
bfell@leeirvine.com

MARK JERUE
Senior Vice President
CalDRE: 01073399
(949) 790-3121
mjerue@leeirvine.com

CRAIG FITTERER
Senior Vice President
CalDRE: 01246929
(949) 790-3123
cfitterer@leeirvine.com

GIANCARLO SPINOSI
Senior Associate
CalDRE: 02065254
(949) 790-3109
gspinosi@leeirvine.com

All information furnished regarding property for sale, rental or financing is from sources deemed reliable, but no warranty or representation is made to the accuracy thereof and same is submitted to errors, omissions, change of price, rental or other conditions prior to sale, lease or financing or withdrawal without notice. No liability of any kind is to be imposed on the broker herein.