

± 4,129 - 5,947 SF FOR LEASE

AVAILABLE

Maple Centre

1831 Commerce Street, Corona, CA



PROPERTY FEATURES

- High Image Industrial / Office Park
- Brand New Office Build Out
- Multiple Office Layouts Available
- Easy Access to 91 Freeway
- Prime West Corona Location
- Professionally Maintained Business Park



RYAN MILLER

Senior Vice President

909.545.8010

Lic. #01843217

ryanmiller@voitco.com

3280 E. Guasti Road, Suite 100, Ontario, CA 91761 • 909.545.8000 • 909.354.3253 Fax

Voit

REAL ESTATE SERVICES

www.VoitCo.com

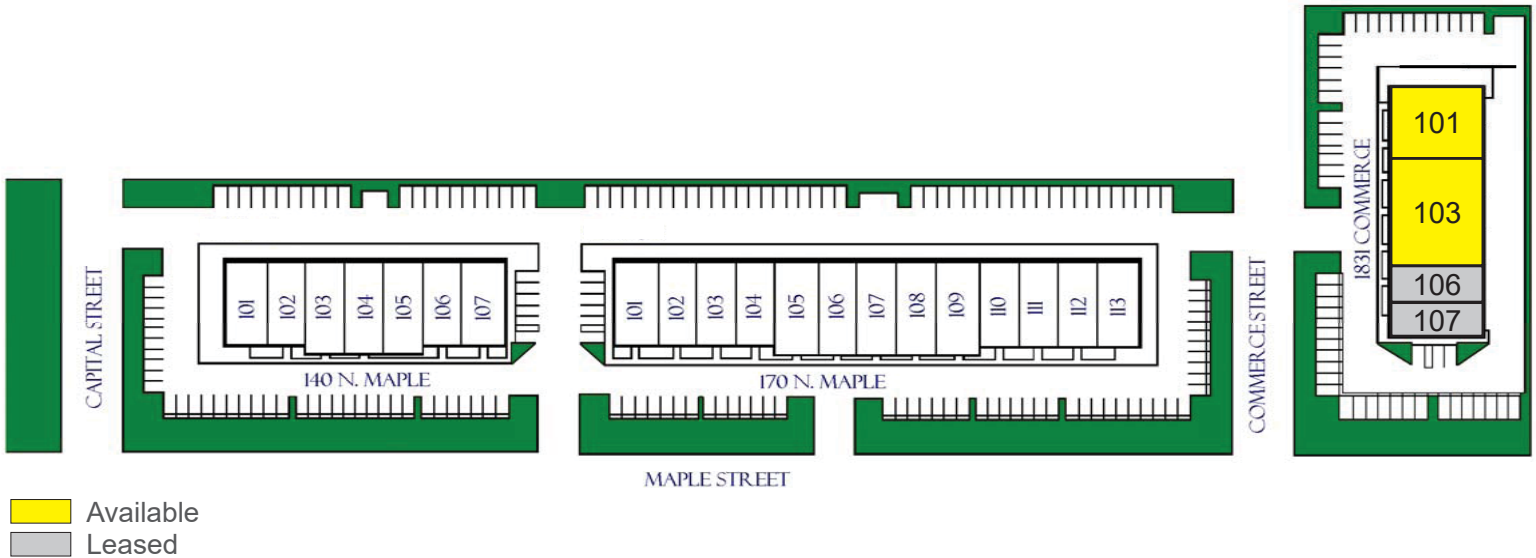
± 4,129 - 5,947 SF FOR LEASE

AVAILABLE

Maple Centre

1831 Commerce Street, Corona, CA

SITE PLAN



AVAILABILITY

Address	Square Foot	Description
1831 Commerce St, Unit 101	± 4,129	2 Private Offices, 1 Conference Room, Open Area and Kitchen
1831 Commerce St, Unit 103	± 5,947	2 Private Offices, 1 Conference Room, Open Area and Kitchen

RYAN MILLER

Senior Vice President

909.545.8010

Lic. #01843217

ryanmiller@voitco.com

Voit

REAL ESTATE SERVICES

3280 E. Guasti Road, Suite 100, Ontario, CA 91761 • 909.545.8000 • 909.354.3253 Fax

Licensed as Real Estate Salespersons by the DRE. The information contained herein has been obtained from sources we deem reliable. While we have no reason to doubt its accuracy, we do not guarantee it. ©2020 Voit Real Estate Services, Inc. All Rights Reserved. License #01991785.

www.VoitCo.com

± 4,129 - 5,947 SF FOR LEASE

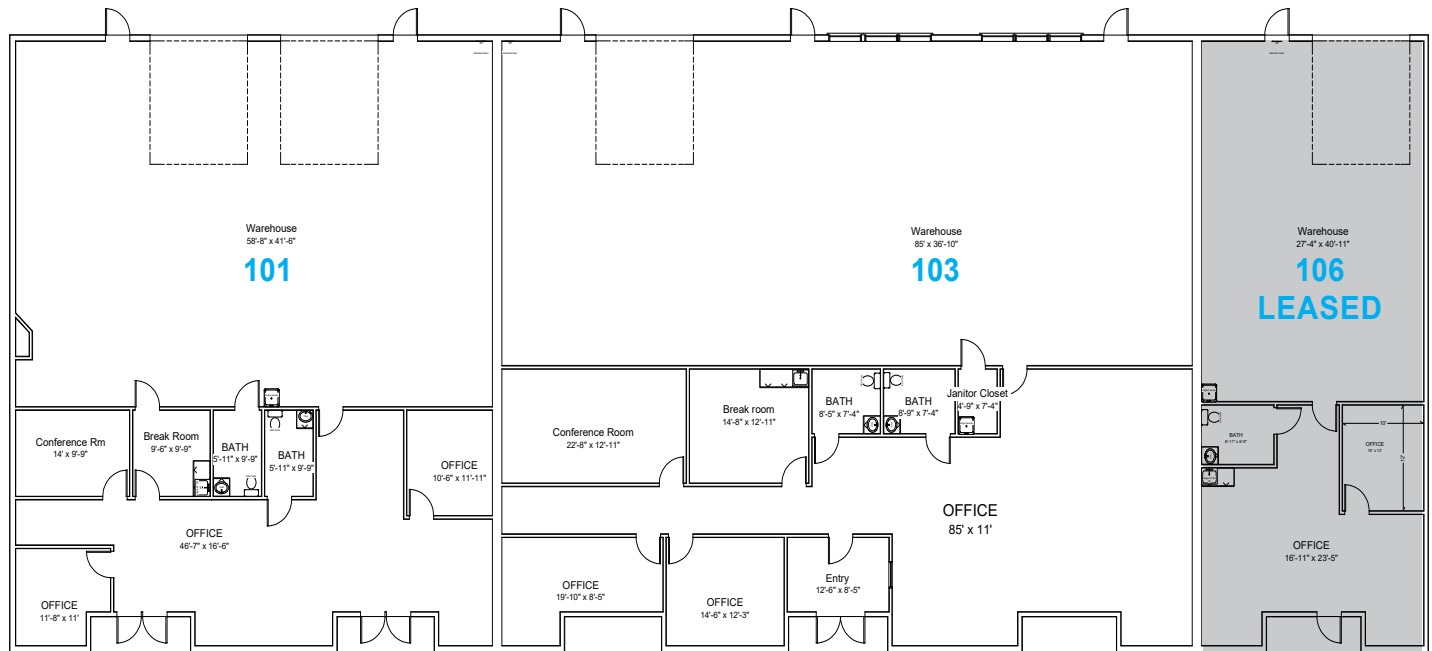
AVAILABLE

Maple Centre

1831 Commerce Street, Corona, CA

FLOOR PLAN

1831 COMMERCE STREET



RYAN MILLER

Senior Vice President

909.545.8010

Lic. #01843217

ryanmiller@voitco.com

Voit

REAL ESTATE SERVICES

3280 E. Guasti Road, Suite 100, Ontario, CA 91761 • 909.545.8000 • 909.354.3253 Fax

Licensed as Real Estate Salespersons by the DRE. The information contained herein has been obtained from sources we deem reliable.

While we have no reason to doubt its accuracy, we do not guarantee it. ©2019 Voit Real Estate Services, Inc. All Rights Reserved. License #01991785.

www.VoitCo.com

± 4,129 - 5,947 SF FOR LEASE

AVAILABLE

Maple Centre

1831 Commerce Street, Corona, CA

INTERIOR PHOTOS



RYAN MILLER

Senior Vice President

909.545.8010

Lic. #01843217

ryanmiller@voitco.com

3280 E. Guasti Road, Suite 100, Ontario, CA 91761 • 909.545.8000 • 909.354.3253 Fax

Licensed as Real Estate Salespersons by the DRE. The information contained herein has been obtained from sources we deem reliable. While we have no reason to doubt its accuracy, we do not guarantee it. ©2019 Voit Real Estate Services, Inc. All Rights Reserved. License #01991785.

Voit

REAL ESTATE SERVICES

www.VoitCo.com