

100

S. Anaheim Boulevard
Anaheim, California



**Newmark
Knight Frank**
www.ngkf.com



CENTRALLY LOCATED

located at the nerve center of the vibrant and dynamic, amenity-rich Downtown Anaheim.





FEATURES

- Walking distance to Packing House and Center Street Promenade, best amenity base in Orange County
- 3-story office tower features elegant reflective glass in an anodized aluminum frame with concrete base
- Ample structure and surface parking for guests and tenants
- Centrally located between the 5, 91 and 57 freeways
- Walking distance to OCTA bus stop with access to MetroLink for train service

AVAILABILITIES

2nd FLOOR

Suite 200 - 3,816 RSF

Excellent open concept second floor office

3rd FLOOR

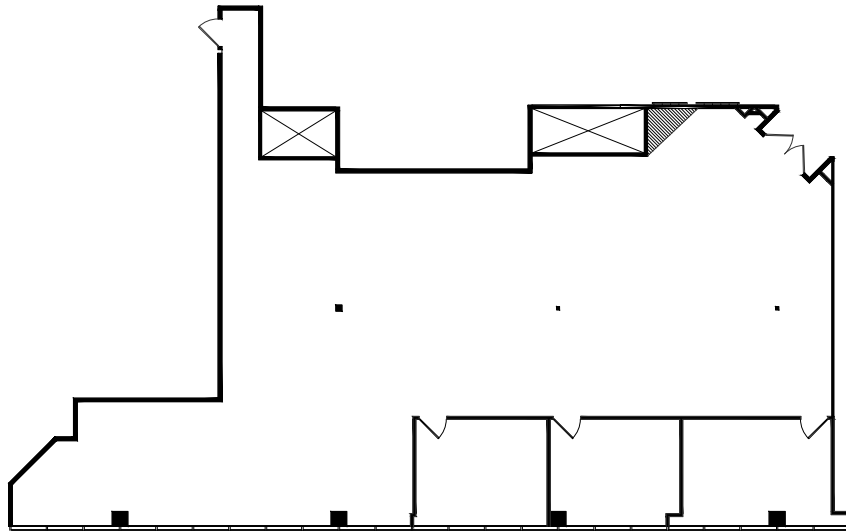
Suite 340 - 2,659 RSF

Reception, conference, 4 private offices, open work area

FLOOR PLANS



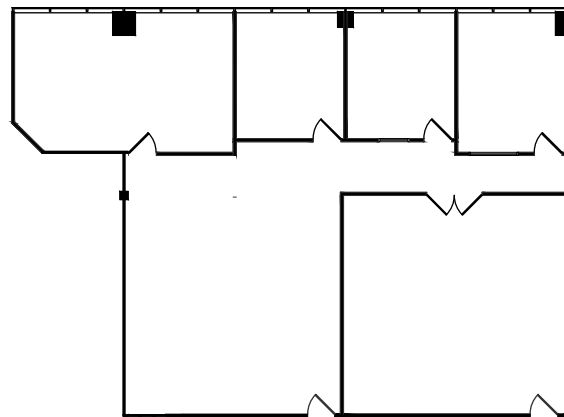
2nd FLOOR Suite 200 - 3,816 RSF



FLOOR PLANS



3rd FLOOR
Suite 340 - 2,659 RSF



THE NEIGHBORHOOD

Walkable Amenities

- Anaheim Packing House
 - Adya
 - Black Sheep GCB
 - BXCR Wine Bar
 - Cafecito Organico
 - The Chippy Fish & Grill
 - Crepe Coop
 - Ecco Restaurant
 - Georgia's Restaurant
 - Hammer
 - Hans Homemade Ice Cream
 - The Iron Press
 - The Kroft
 - Mix It Up
 - Orange TEI
 - Pandor Bakery
 - Popbar
 - Rolling Boil
 - Saw Leaf
 - Urbana
 - Vitaly
- Center Street Promenade
 - Barber
 - Caffé Primo
 - Cervantes Mexican Kitchen
 - Center Street Cheese Shop
 - Globe Deli
 - The Good
 - The Gypsy Den
 - Healthy Junk
 - Heart & Sole
 - Home Eco:Nomics
 - Ink & Bean
 - J.Mac
 - K&A Café
 - Pokinometry
 - Pour Vida
 - Rare
 - Remedy Hair Shoppe
 - Street Smarts
 - The Yoga Mat
- Farmer's Park
 - Muzeo Museum
- Packard Building
 - Anaheim Brewery
 - Umami Burger
- The Rinks Anaheim Ice
 - Vons Center
 - Starbucks
 - Subway
 - Vons



Newmark Knight Frank

www.ngkf.com



Procuring broker shall only be entitled to a commission, calculated in accordance with the rates approved by our principal only if such procuring broker executes a brokerage agreement acceptable to us and our principal and the conditions as set forth in the brokerage agreement are fully and unconditionally satisfied. Although all information furnished regarding property for sale, rental, or financing is from sources deemed reliable, such information has not been verified and no express representation is made nor is any to be implied as to the accuracy thereof and it is submitted subject to errors, omissions, change of price, rental or other conditions, prior sale, lease or financing, or withdrawal without notice and to any special conditions imposed by our principal.

For more information, please contact:

ANDREW ROBBEN
 Managing Director
 Newmark Grubb Knight Frank
 949.608.2073
 CA RE License #01372891
 arobben@ngkf.com

ERIC PURMORT
 Associate Director
 Newmark Grubb Knight Frank
 949.608.2088
 CA RE License #01933655
 epurmort@ngkf.com