

# CORONA CORPORATE CENTER

495 E. Rincon Street  
Corona, CA 92879



## PROJECT HIGHLIGHTS

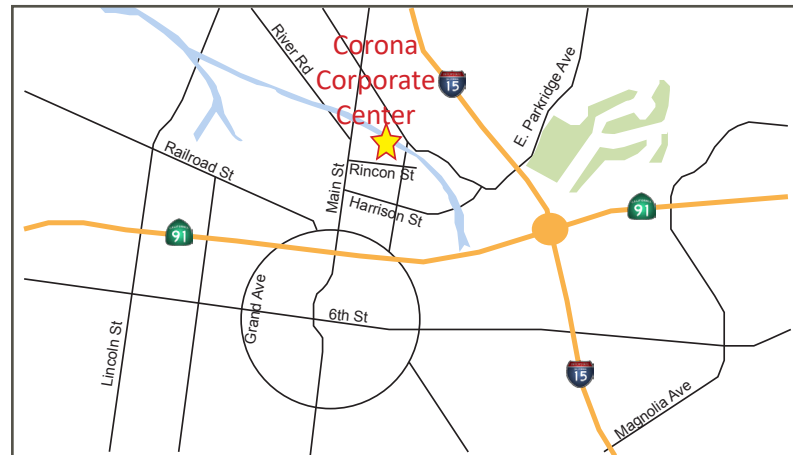
Two-Story, Class B Professional Office Building

Outdoor Courtyard & Fountain

Entire Interior Recently Renovated

Flexible Suite Sizes

Abundant Free Surface Parking



**ANDREW PEAKE**

951.276.3644

[apeak@lee-associates.com](mailto:apeak@lee-associates.com)

DRE #01398894

**JOSEPH PIERIK**

951.276.3685

[jpierik@lee-associates.com](mailto:jpierik@lee-associates.com)

DRE #02144961

**MASON WILSON**

951.276.3603


[mwilson@lee-associates.com](mailto:mwilson@lee-associates.com)

DRE #02163918

# CORONA CORPORATE CENTER

495 E. Rincon Street  
Corona, CA 92879

## AVAILABILITIES

Suite	Size	Lease Rate	Notes	Floor Plan	Video
175	1,600 SF	\$2.35 PSF	Reception, Open Area, Conference Room, Multiple Private Offices		

- RATE INCREASES:** 3% Annually
- BUILDING TYPE:** Class B Two-Story Professional Office Building
- TENANT IMPROVEMENTS:** Negotiable
- LEASE TERM:** 2 – 5 Years
- PARKING:** 4:1,000 Square Feet Surface

**ANDREW PEAKE**  
951.276.3644  
[apeek@lee-associates.com](mailto:apeek@lee-associates.com)  
DRE #01398894

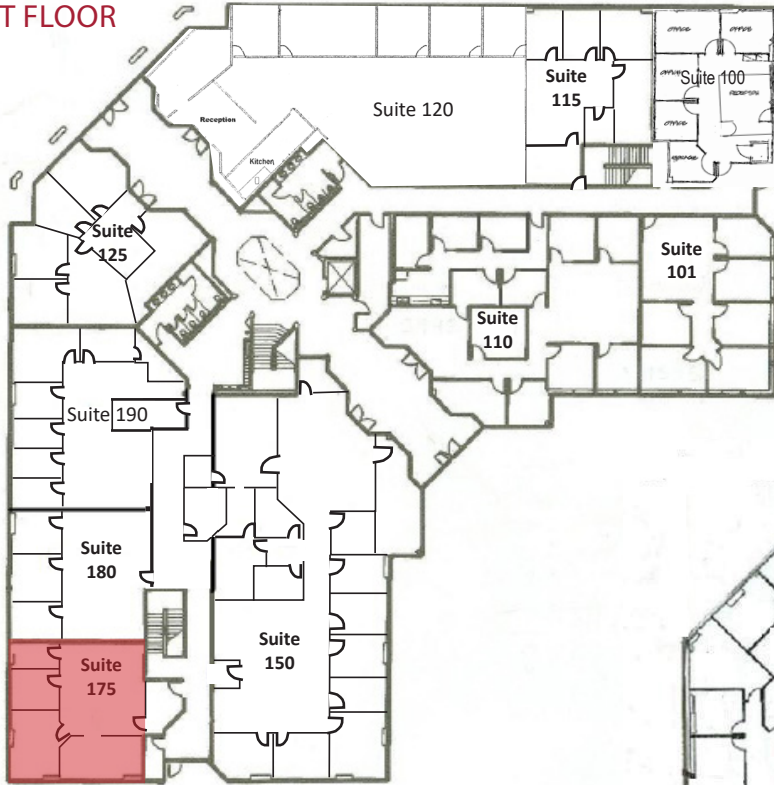
**JOSEPH PIERIK**  
951.276.3685  
[jpierik@lee-associates.com](mailto:jpierik@lee-associates.com)  
DRE #02144961

**MASON WILSON**  
951.276.3603  
[mwilson@lee-associates.com](mailto:mwilson@lee-associates.com)  
DRE #02163918

# CORONA CORPORATE CENTER

495 E. Rincon Street  
Corona, CA 92879

**FIRST FLOOR**



Available  
Suite 175  
1,600 SF



**SECOND FLOOR**



**ANDREW PEAKE**  
951.276.3644  
[apeak@lee-associates.com](mailto:apeak@lee-associates.com)  
DRE #01398894

**JOSEPH PIERIK**  
951.276.3685  
[jpierik@lee-associates.com](mailto:jpierik@lee-associates.com)  
DRE #02144961

**MASON WILSON**  
951.276.3603  
[mwilson@lee-associates.com](mailto:mwilson@lee-associates.com)  
DRE #02163918

# CORONA CORPORATE CENTER

495 E. Rincon Street  
Corona, CA 92879

## COURTYARD



**ANDREW PEAKE**

951.276.3644

[apeak@lee-associates.com](mailto:apeak@lee-associates.com)

DRE #01398894

**JOSEPH PIERIK**

951.276.3685

[jpierik@lee-associates.com](mailto:jpierik@lee-associates.com)

DRE #02144961

**MASON WILSON**

951.276.3603

[mwilson@lee-associates.com](mailto:mwilson@lee-associates.com)

DRE #02163918

Lee & Associates Commercial Real Estate Services, Inc. - Riverside.

4193 Flat Rock Drive, Suite 100 Riverside, CA 92505 | Corporate DRE #01048055

No warranty or representation has been made to the accuracy of the foregoing information. Terms of sale or lease and availability are subject to change or withdrawal without notice.