

INLAND TERRACE CORPORATE CENTER PROFESSIONAL OFFICES FOR LEASE

27368 VIA INDUSTRIA - TEMECULA, CA 92590



PROPERTY HIGHLIGHTS:

- 7,166 SF Suite Available For Lease
- Class A office building
- Elevator served
- Views of the Temecula Valley
- Ample parking
- Two story lobby
- Outdoor patio
- New ownership



JIM NADAL, CCIM • 951.445.4520 • jnadal@leetemecula.com • DRE #01040679

INLAND TERRACE CORPORATE CENTER PROFESSIONAL OFFICES FOR LEASE

27368 VIA INDUSTRIA - TEMECULA, CA 92590

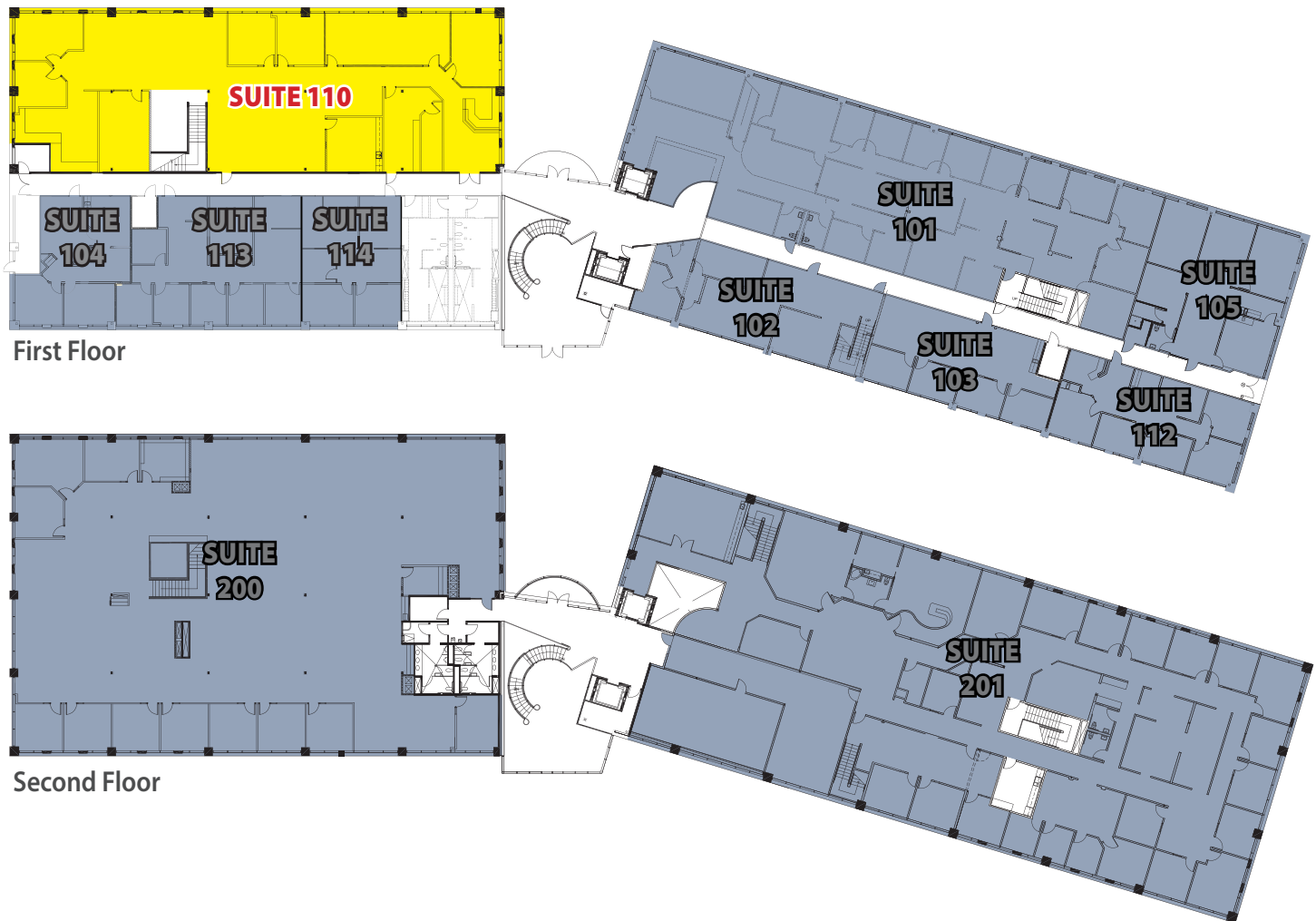
AVAILABLE SPACE - 1ST FLOOR

Suite	SF (±)	Rate/SF	Description
110	7,166	\$1.75	Sublease through 8/31/2026

AVAILABLE SPACE - 2ND FLOOR

Suite	SF (±)	Rate/SF	Description
100% Leased			

Revised: 03/04/2025

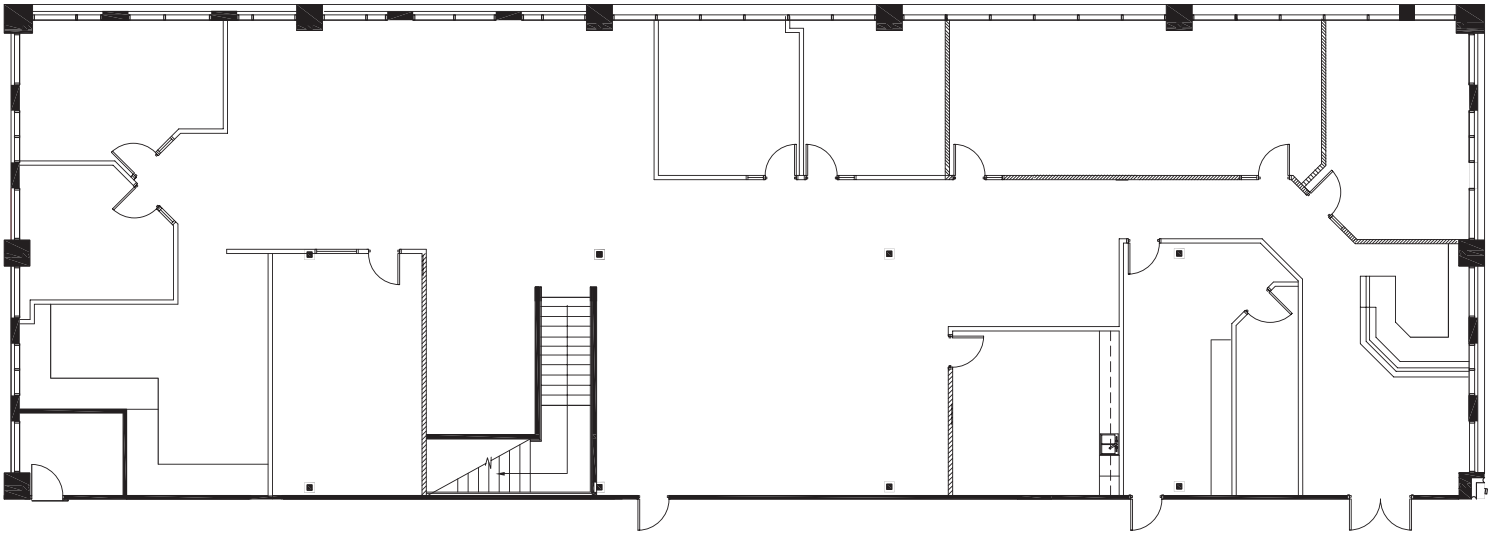


JIM NADAL, CCIM • 951.445.4520 • jnadal@leetemecula.com • DRE #01040679

INLAND TERRACE CORPORATE CENTER PROFESSIONAL OFFICES FOR LEASE

27368 VIA INDUSTRIA - TEMECULA, CA 92590

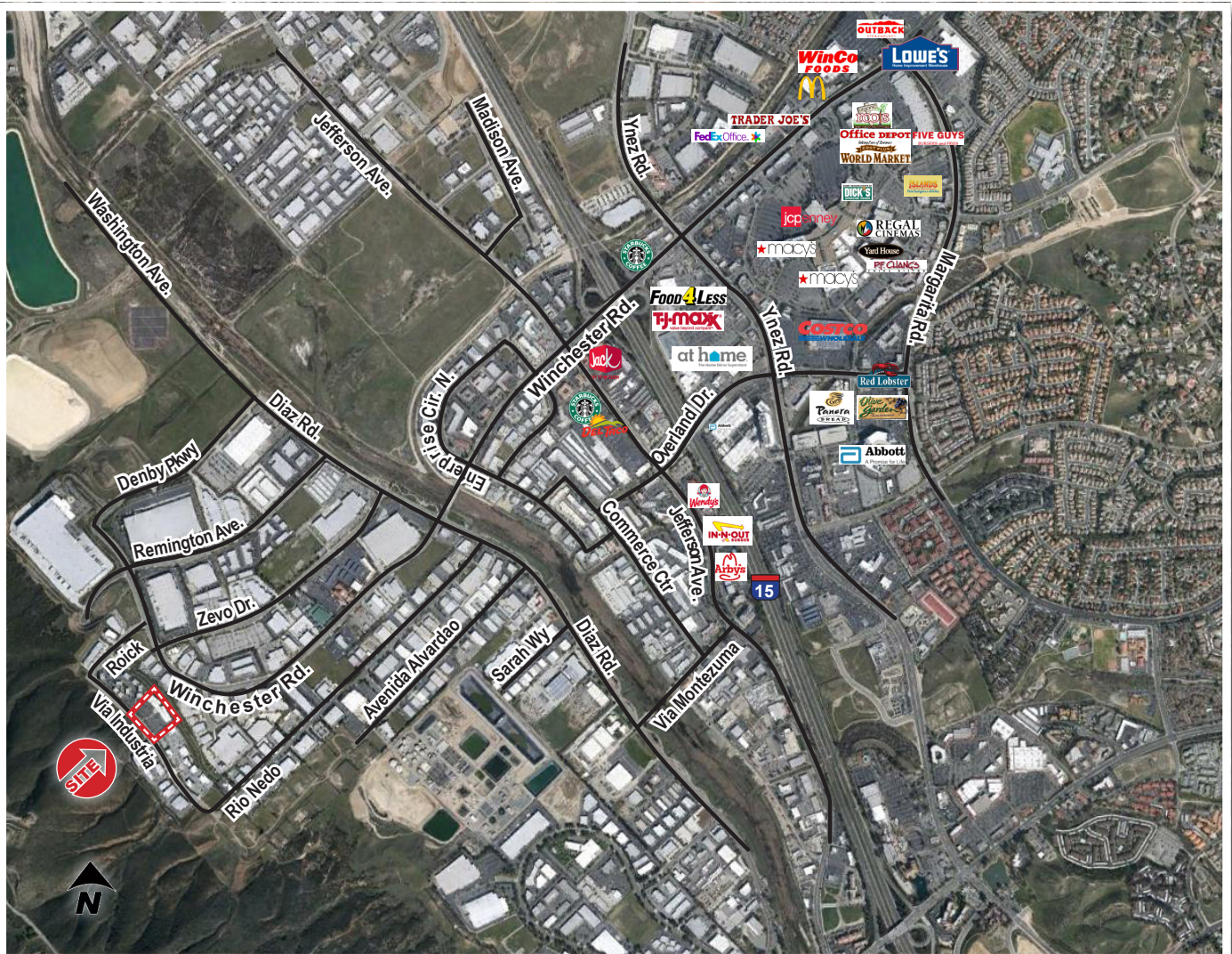
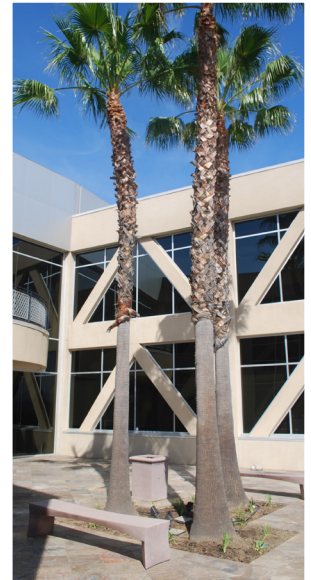
Suite 110
±7,166 SF



JIM NADAL, CCIM • 951.445.4520 • jnadal@leetemecula.com • DRE #01040679

INLAND TERRACE CORPORATE CENTER PROFESSIONAL OFFICES FOR LEASE

27368 VIA INDUSTRIA - TEMECULA, CA 92590



JIM NADAL, CCIM • 951.445.4520 • jnadal@leetemecula.com • DRE #01040679