

LEGACY CORPORATE CENTER

OFFICE SUITES FOR LEASE

41951 REMINGTON AVENUE - TEMECULA, CA



PROPERTY HIGHLIGHTS:

- 32,000 SF Class "A" Office Building
- 2,140 SF - 2,661 SF Suites Available
- Class A Building Standards
- Elevator Served
- Coffee Bars in Each Suite
- Flexible Lease Terms
- Lush Landscaping
- Easy Access to Interstate 15
- 4:1,000 SF Parking
- From \$1.64 PSF!



JIM NADAL, ccim • 951.445.4520 • jnadal@leetemecula.com • DRE #01040679

LEGACY CORPORATE CENTER

OFFICE SUITES FOR LEASE

41951 REMINGTON AVENUE - TEMECULA, CA

SUITE AVAILABILITY

FIRST FLOOR

SUITE	± SIZE	MONTHLY LEASE RATE	COMMENTS
100	2,140	\$3,724 / MONTH (\$1.74 / PSF / MONTH)	Highly Desirable Corner Office Off Building Lobby With Double Door Entry. Contact Agent To Tour.
150	2,661	\$4,364 / MONTH (\$1.64 / PSF / MONTH)	Corner Office With Large Conference Room And Upgraded Kitchen/Break Area. Contact Agent To Tour.

SECOND FLOOR

SUITE	± SIZE	MONTHLY LEASE RATE	COMMENTS
100% Leased			

Rev. 02/13/2025

- 5% Annual Increases.
- Rates based on a minimum 3-year term.
- 20% premium for 2-year terms.

All rental rates are quoted based upon a Modified Gross Lease form.

Rental rates are subject to change at the Owner's sole discretion.

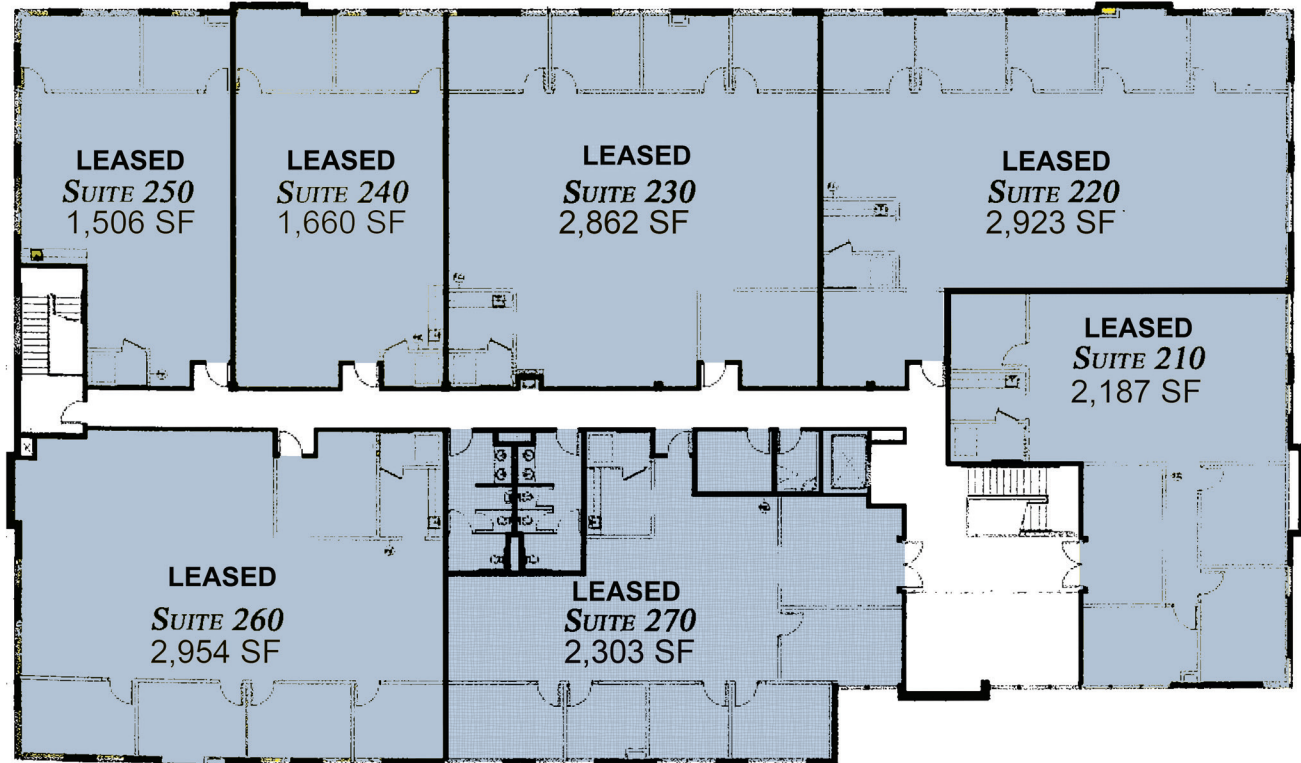
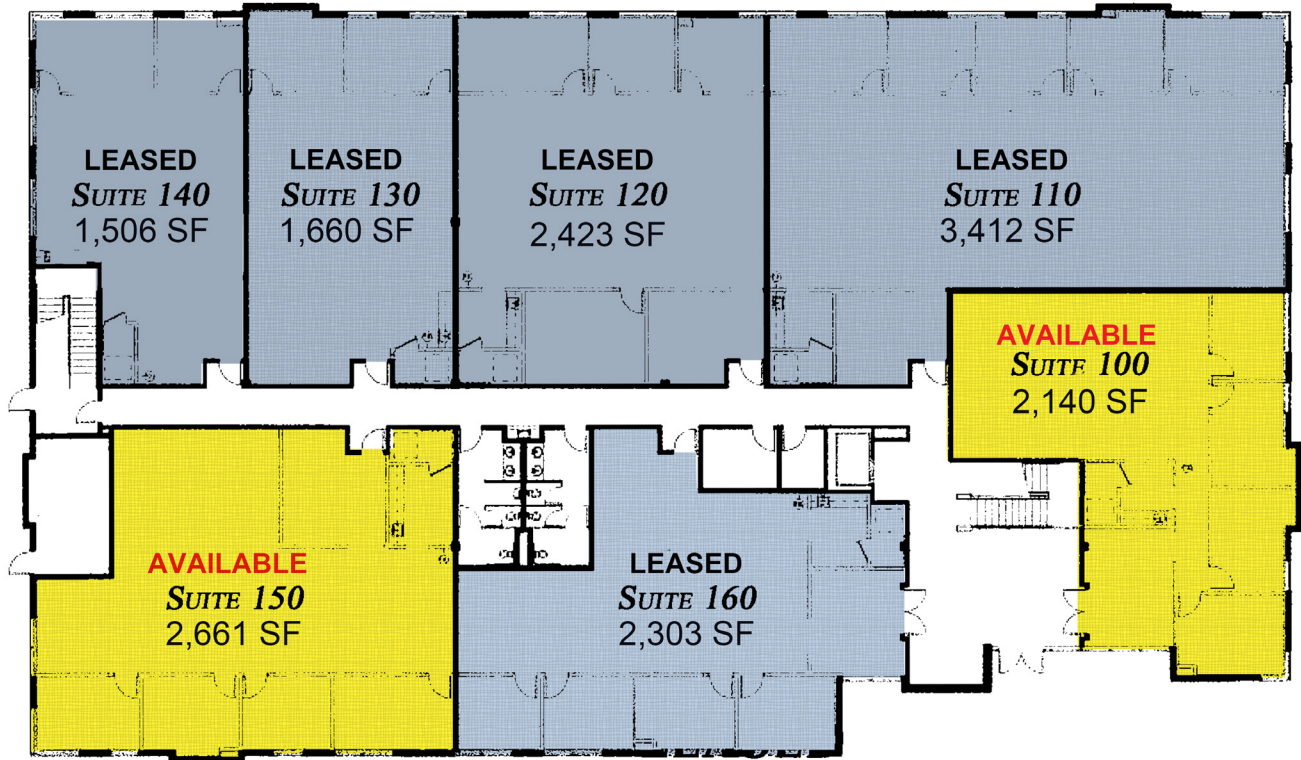


JIM NADAL, ccim • 951.445.4520 • jnadal@leetemecula.com • DRE #01040679

LEGACY CORPORATE CENTER

OFFICE SUITES FOR LEASE

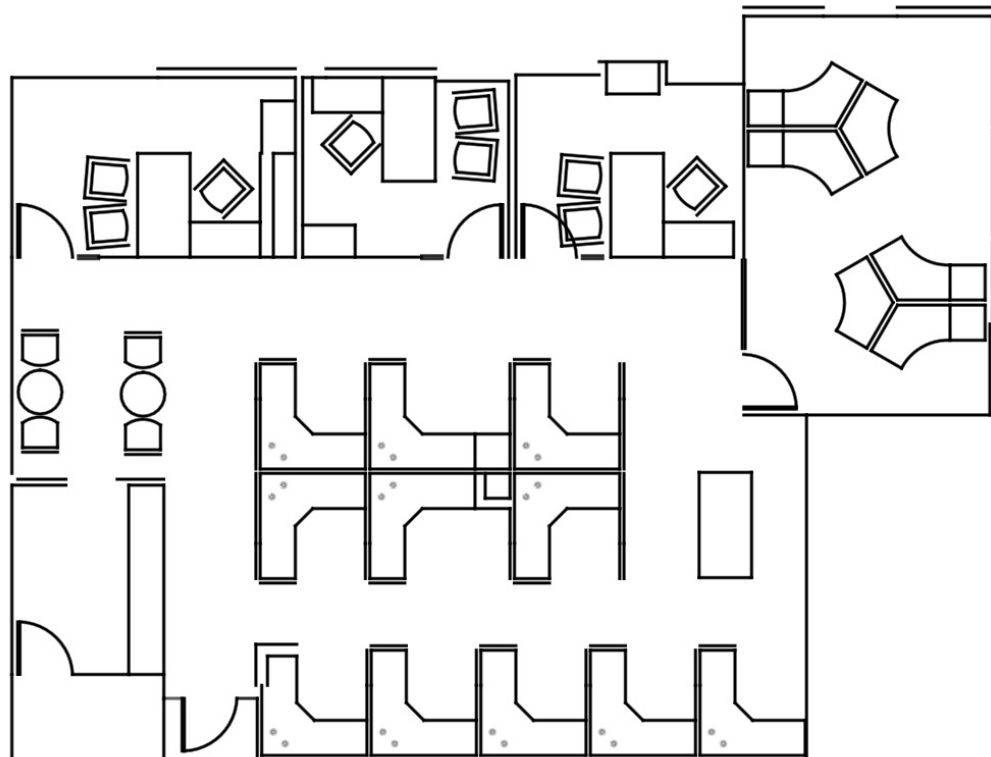
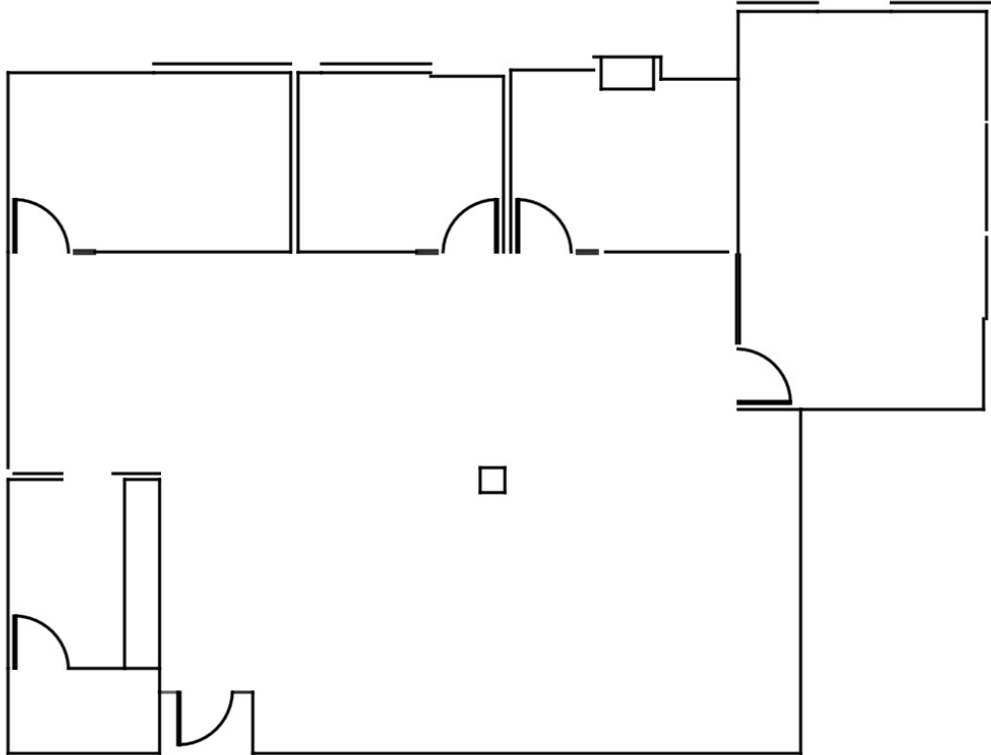
41951 REMINGTON AVENUE - TEMECULA, CA



JIM NADAL, ccim • 951.445.4520 • jnadal@leetemecula.com • DRE #01040679

41951 REMINGTON AVENUE - TEMECULA, CA

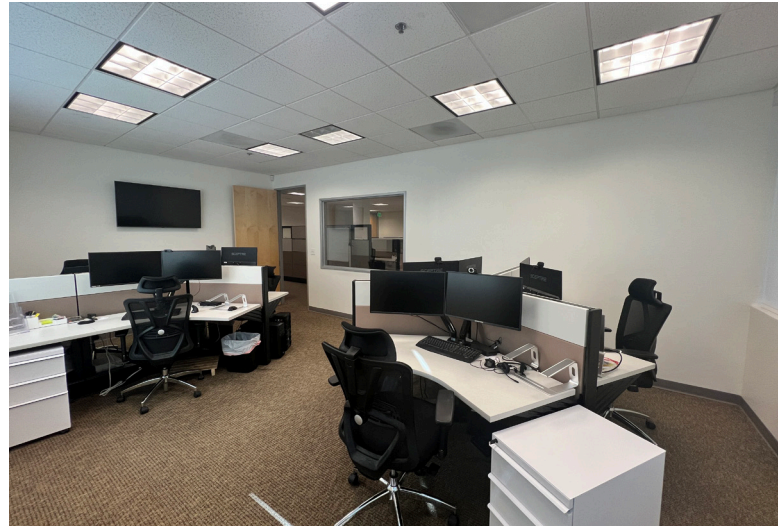
SUITE 150 FLOORPLAN



JIM NADAL, ccim • 951.445.4520 • jnadal@leetemecula.com • DRE #01040679

41951 REMINGTON AVENUE - TEMECULA, CA

SUITE 150 PHOTOS



JIM NADAL, ccim • 951.445.4520 • jnadal@leetemecula.com • DRE #01040679