

# STADIUM LANDING

2020 - 2100 EAST HOWELL AVENUE | ANAHEIM | CALIFORNIA



Property Touring Guidelines



# Voit

REAL ESTATE SERVICES

2020 Main Street, Suite 100, Irvine, California 92614 | 949.851.5100 | Lic #01991785 | [www.VoitCo.com](http://www.VoitCo.com)

**SETH DAVENPORT**  
714 935 2376  
sdavenport@voitco.com  
Lic. #01413387

**HAYDEN SOCCI**  
714 935 2379  
hsocci@voitco.com  
Lic. #01705038

**MITCH ZEHNER**  
714 935 2307  
mzehner@voitco.com  
Lic. #00882464

# STADIUM LANDING

2020 - 2100 EAST HOWELL AVENUE | ANAHEIM | CALIFORNIA



# STADIUM LANDING

2020 - 2100 EAST HOWELL AVENUE | ANAHEIM | CALIFORNIA



## AVAILABILITIES

BUILDING ADDRESS	UNIT SF	OFFICE SF	WAREHOUSE SF	GL DOORS	ASKING BASE RENT - GROSS	COMMENTS
<b>2120 HOWELL AVENUE</b>						
Suite 404	±560	±560	NA	0	\$1.50 PSF	100% Office suite. Reception and 2 private offices
Suite 415	±1,600	±1,100	±500	1	\$1.35 PSF	Frontage suite, large showroom/open office area, restroom and warehouse with loading door

\*CAM (Common Area Maintenance - ±\$0.10 Per Square Foot



REAL ESTATE SERVICES

2020 Main Street, Suite 100, Irvine, California 92614 | 949.851.5100 | Lic #01991785 | [www.VoitCo.com](http://www.VoitCo.com)

**SETH DAVENPORT**

714 935 2376

[sdavenport@voitco.com](mailto:sdavenport@voitco.com)

Lic. #01413387

**HAYDEN SOCCI**

714 935 2379

[hsocci@voitco.com](mailto:hsocci@voitco.com)

Lic. #01705038

**MITCH ZEHNER**

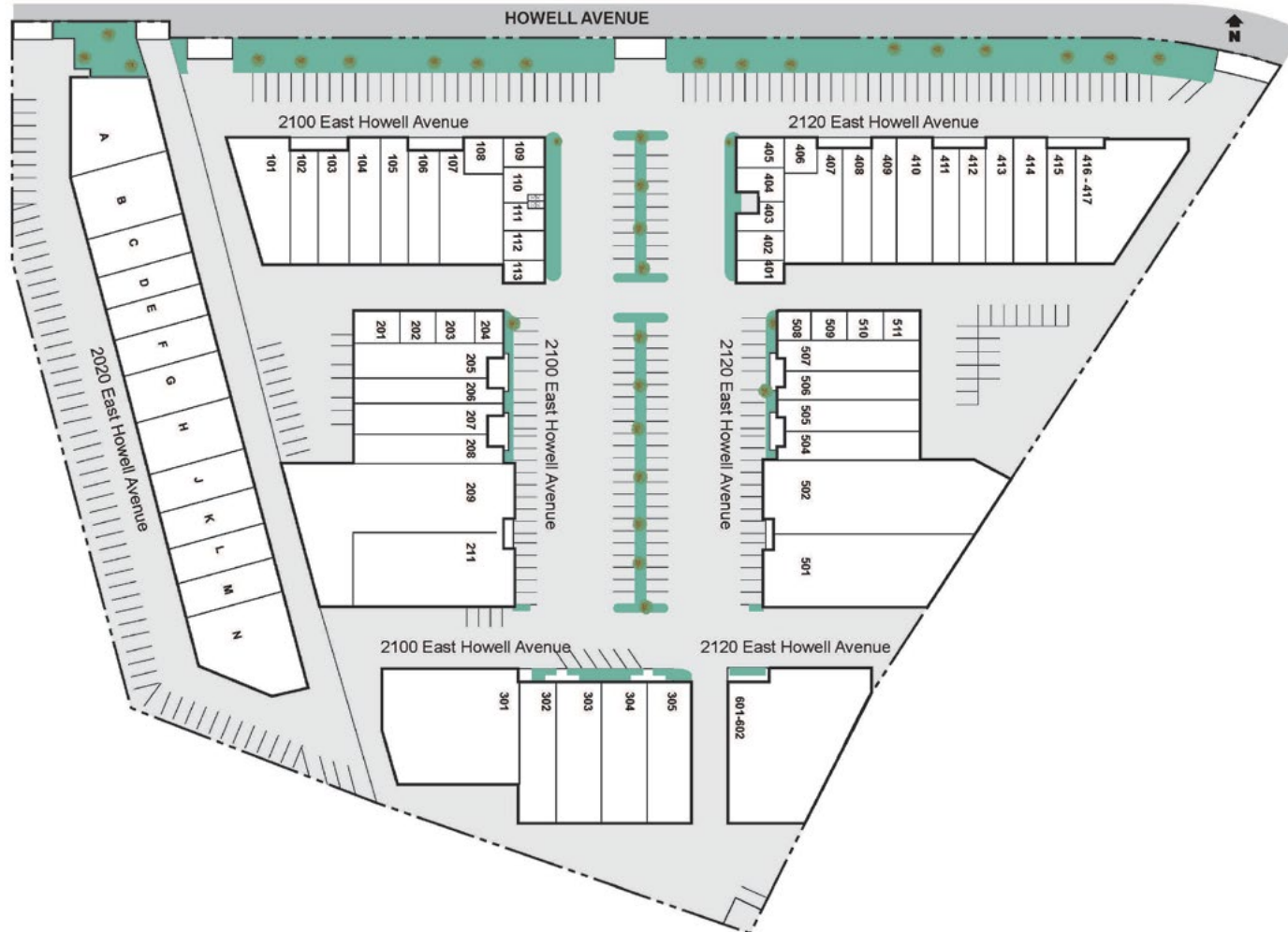
714 935 2307

[mzehner@voitco.com](mailto:mzehner@voitco.com)

Lic. #00882464

# STADIUM LANDING

2020 - 2100 EAST HOWELL AVENUE | ANAHEIM | CALIFORNIA



REAL ESTATE SERVICES

2020 Main Street, Suite 100, Irvine, California 92614 | 949.851.5100 | Lic #01991785 | [www.VoitCo.com](http://www.VoitCo.com)

**SETH DAVENPORT**  
714 935 2376  
sdavenport@voitco.com  
Lic. #01413387

**HAYDEN SOCCI**  
714 935 2379  
hsocci@voitco.com  
Lic. #01705038

**MITCH ZEHNER**  
714 935 2307  
mzehner@voitco.com  
Lic. #00882464

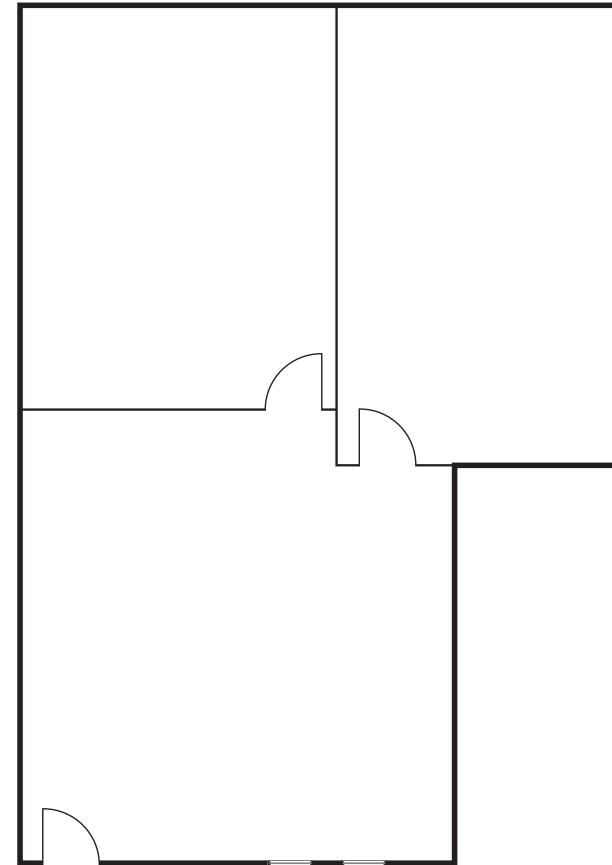


# STADIUM LANDING

2020 - 2100 EAST HOWELL AVENUE | ANAHEIM | CALIFORNIA



## 2120 HOWELL AVENUE | UNIT 404 - 560 SF



\* Floorplan may not represent actual layout of unit

# Voit

REAL ESTATE SERVICES

2020 Main Street, Suite 100, Irvine, California 92614 | 949.851.5100 | Lic #01991785 | [www.VoitCo.com](http://www.VoitCo.com)

**SETH DAVENPORT**  
714 935 2376  
sdavenport@voitco.com  
Lic. #01413387

**HAYDEN SOCCI**  
714 935 2379  
hsocci@voitco.com  
Lic. #01705038

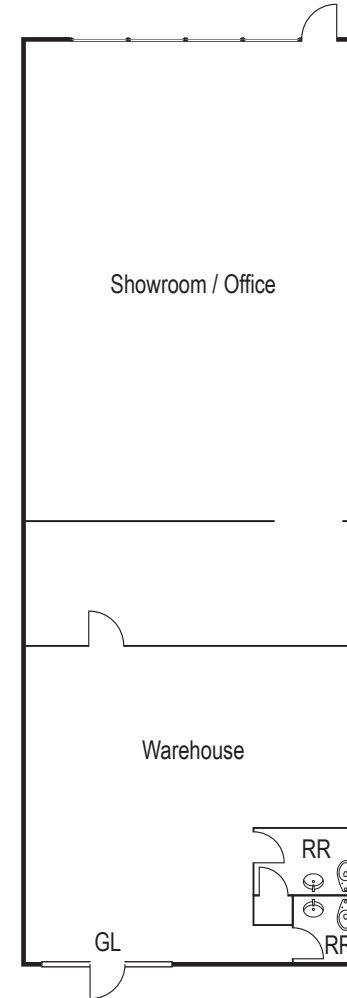
**MITCH ZEHNER**  
714 935 2307  
mzehner@voitco.com  
Lic. #00882464

# STADIUM LANDING

2020 - 2100 EAST HOWELL AVENUE | ANAHEIM | CALIFORNIA



## 2120 HOWELL AVENUE | UNIT 415 - 1,600 SF



\* Floorplan may not represent actual layout of unit

# Voit

REAL ESTATE SERVICES

2020 Main Street, Suite 100, Irvine, California 92614 | 949.851.5100 | Lic #01991785 | [www.VoitCo.com](http://www.VoitCo.com)

**SETH DAVENPORT**  
714 935 2376  
sdavenport@voitco.com  
Lic. #01413387

**HAYDEN SOCCI**  
714 935 2379  
hsocci@voitco.com  
Lic. #01705038

**MITCH ZEHNER**  
714 935 2307  
mzehner@voitco.com  
Lic. #00882464