

MAJOR
BUILDING
RENOVATIONS
RECENTLY
COMPLETED

678-63

CARING TOUCH SERVICES

"Asambleas Christianas"
"Este Es El Dia"

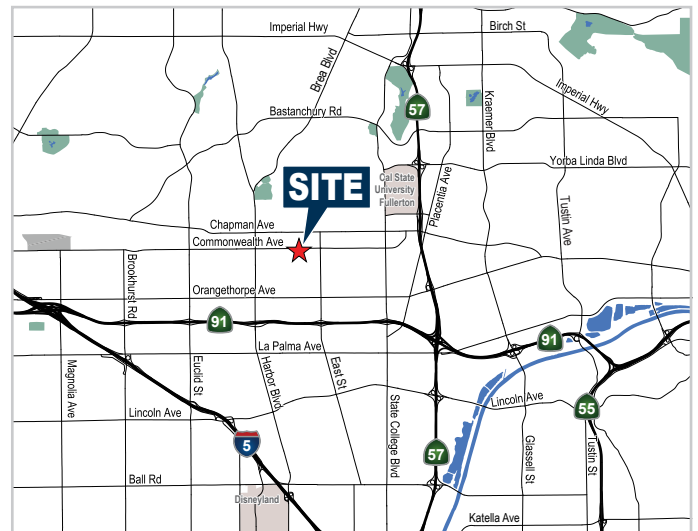
KORY PLAZA

620-700 Commonwealth Ave., Fullerton

± 851-4,222 SQ. FT.
FOR LEASE

Property features

- Office/Commercial Space
- General Commercial Zoning (Please Verify with City of Fullerton)
- Church and School Uses May Be Permitted (Please Verify)
- Centrally Located to the 57, 91 and 5 Freeways
- Less Than One (1) Mile from Downtown Fullerton
- Ample Parking
- Professionally Managed



Zac Kolander
Associate
714.935.2323
zkolander@voitco.com
Lic #02096759

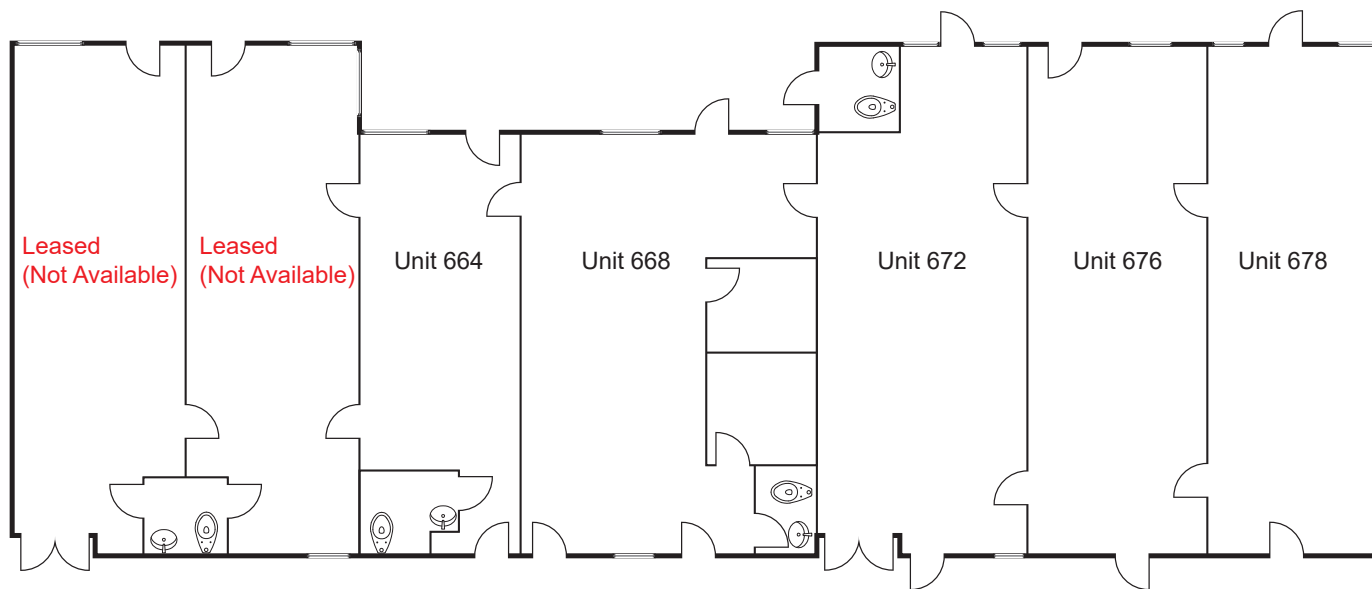
Stan Kwak
SVP, Partner
714.935.2327
skwak@voitco.com
Lic #01824776

Selden McKnight
Associate
714.935.2323
smcknight@voitco.com
Lic #02027919

Voit

REAL ESTATE SERVICES

2400 E. Katella Avenue
Suite 750
Anaheim, CA 92806
Lic #01991785
www.VoitCo.com



Address	Total Size SF	Lease Rate PSF	Comments
664-668 E Commonwealth Avenue	±1,598	\$1.75 Gross	Available Now
672 E Commonwealth Avenue	±917	\$1.75 Gross	Available Now
676 E Commonwealth Avenue	±851	\$1.75 Gross	Available Now
678 E Commonwealth Avenue	±856	\$1.75 Gross	Available Now
662-678 E Commonwealth Avenue	±4,222	\$1.55 Gross	Available Now

KORY PLAZA

620-700 E Commonwealth Ave., Fullerton

±851-4,222 SQ. FT.
FOR LEASE

Zac Kolander
Associate
714.935.2323
zkolander@voitco.com
Lic #02096759

Stan Kwak
SVP, Partner
714.935.2327
skwak@voitco.com
Lic #01824776

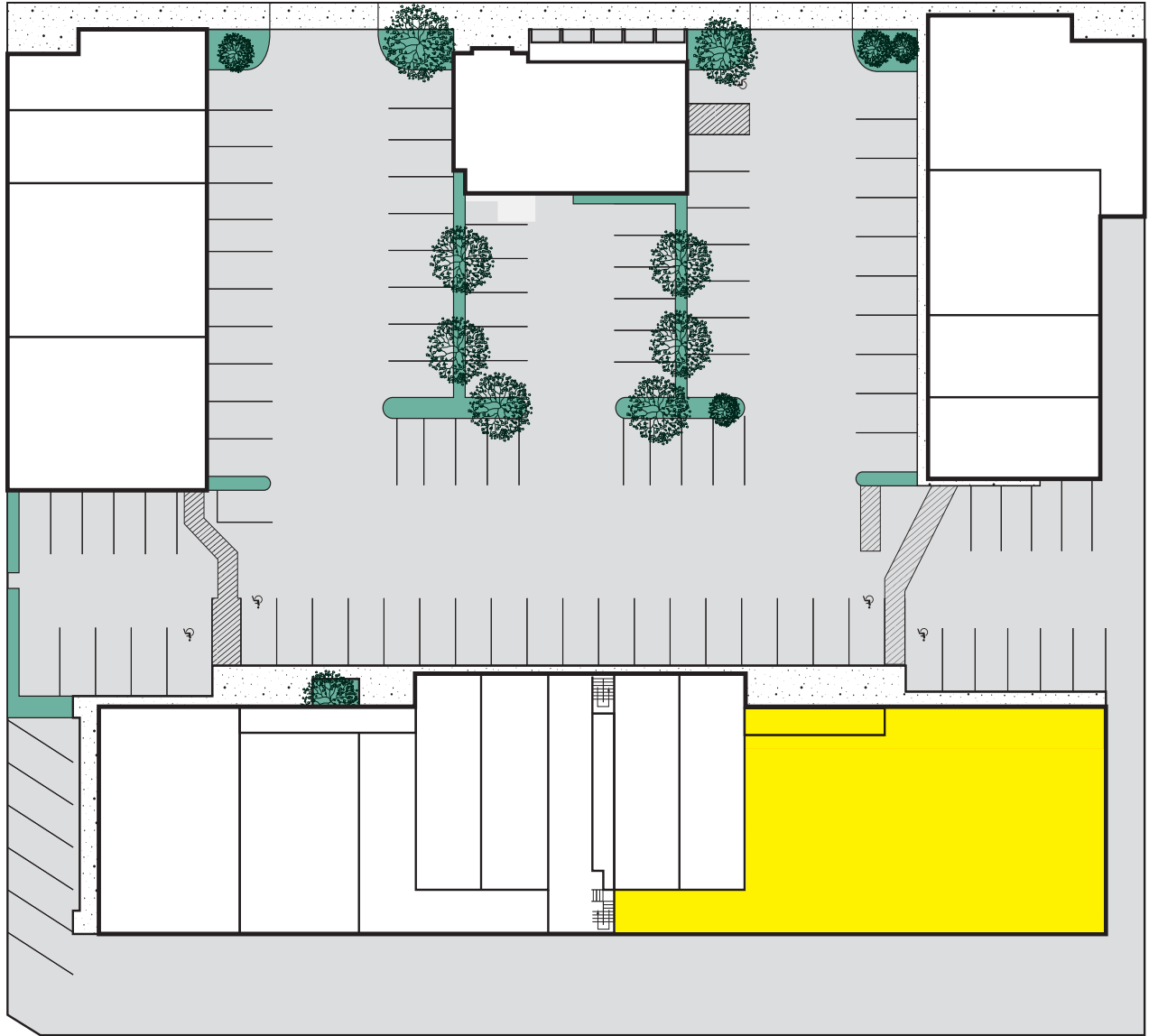
Selden McKnight
Associate
714.935.2323
smcknight@voitco.com
Lic #02027919



REAL ESTATE SERVICES

2400 E. Katella Avenue
Suite 750
Anaheim, CA 92806
Lic #01991785
www.VoitCo.com

COMMONWEALTH AVE



KORY PLAZA

620-700 E Commonwealth Ave., Fullerton

±851-4,222 SQ. FT.
FOR LEASE

Zac Kolander

Associate

714.935.2323

zkolander@voitco.com

Lic #02096759

Stan Kwak

SVP, Partner

714.935.2327

skwak@voitco.com

Lic #01824776

Selden McKnight

Associate

714.935.2323

smcknight@voitco.com

Lic #02027919

Voit

REAL ESTATE SERVICES

2400 E. Katella Avenue

Suite 750

Anaheim, CA 92806

Lic #01991785

www.VoitCo.com

nearby points of interest



Points of Interest	
#	Property
1	The Source, Buena Park
2	Brea Mall
3	Cal State Fullerton
4	Fullerton Airport
5	Fullerton College
6	Knott's Berry Farm
7	Angel's Stadium
8	The Honda Center
9	Disneyland
10	Chapman University
11	Downtown Fullerton
12	St. Jude Medical Center
13	Buena Park Auto Mall
14	Biola University

KORY PLAZA

620-700 E Commonwealth Ave., Fullerton

±851-4,222 SQ. FT.
FOR LEASE

Zac Kolander
Associate
714.935.2323
zkolander@voitco.com
Lic #02096759

Stan Kwak
SVP, Partner
714.935.2327
skwak@voitco.com
Lic #01824776

Selden McKnight
Associate
714.935.2323
smcknight@voitco.com
Lic #02027919



REAL ESTATE SERVICES

2400 E. Katella Avenue
Suite 750
Anaheim, CA 92806
Lic #01991785

www.VoitCo.com