

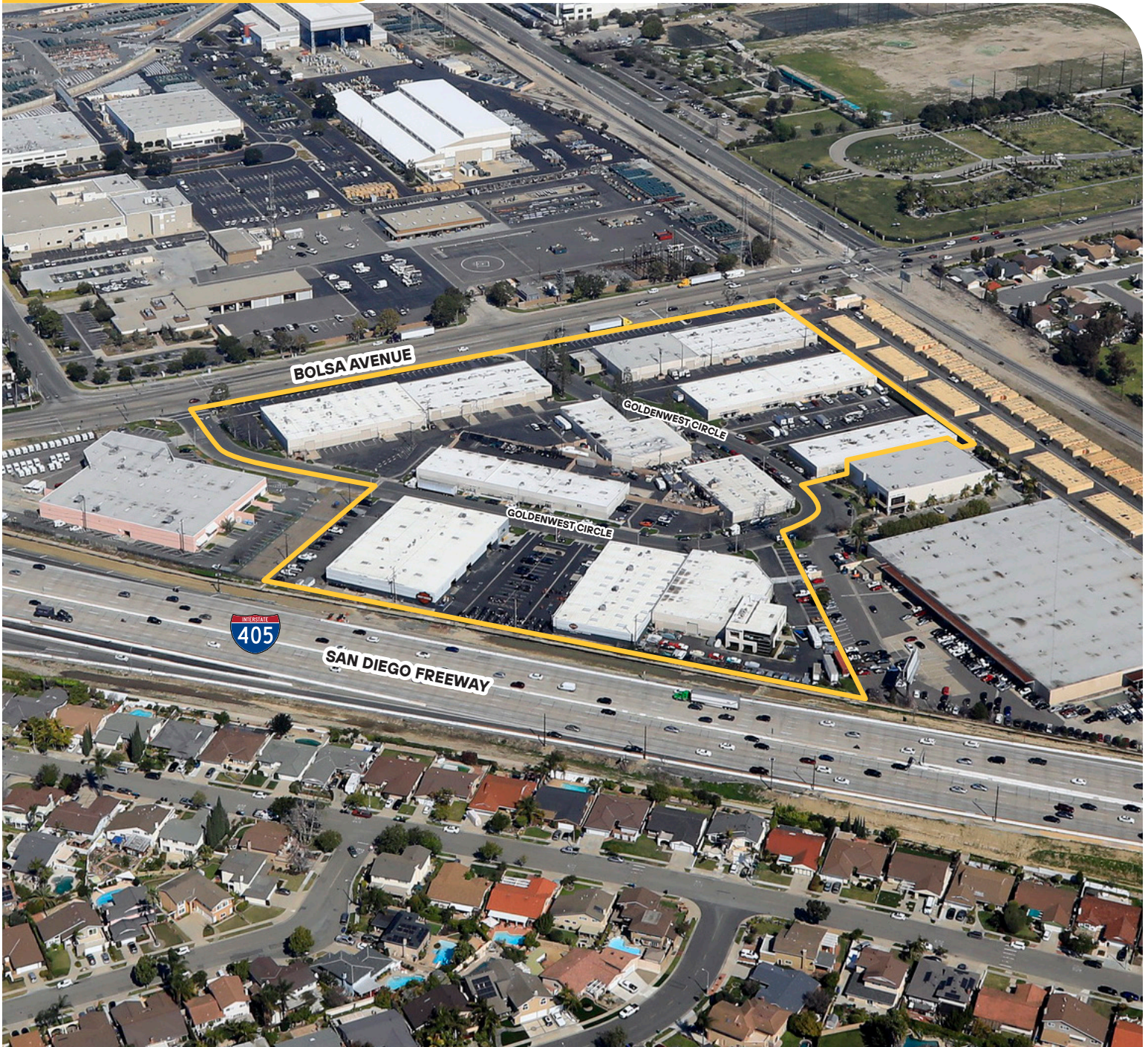
**FOR LEASE**

# Goldenwest Business Park

7300-7404 Bolsa Ave & 15132-15192 Goldenwest Circle  
Westminster, CA



**±231,250 SF**



**CONTACT US**

**Brad Bierbaum** (714) 371-9210 | [brad.bierbaum@cbre.com](mailto:brad.bierbaum@cbre.com) | Lic. 00996170  
**Ryan Peterson** (714) 371-9210 | [ryan.peterson@cbre.com](mailto:ryan.peterson@cbre.com) | Lic. 01336025



**AVAILABILITY****PROPERTY PROFILE**

**Address** 7300-7404 Bolsa Avenue &  
15132-15192 Goldenwest Circle  
Westminster, CA

**Total SF** ±231,250 SF

**Land Size** ±12.63 Acres

**Zoning** M-2 (Medium Industrial)

**Year Built** 1967-1969

**Clear Height** 14-20 Feet

**Parking Ratio** 2:1,000

**Power** 100-400 Amps; 120/240 Volts

**GL Doors** 1-2 Doors per Unit

**AVAILABILITY****7300 Bolsa Avenue**

**Size:** 12,307 SF

**Rate:** \$1.40/SF NNN

**Available:** TBD

**Description:**

Approx. 4,500 SF two-story office area, front reception, conference room, 6 private offices, open office area on first and second floor, 2 private restrooms, 18' warehouse clear, warehouse with 2 GL doors.

**15134 Goldenwest Circle**

**Size:** 3,000 SF

**Rate:** \$1.55/SF Modified Gross

**Available:** 10/1/2024

**Description:**

Approx. 600 SF office area, reception area, 2 private offices, 2 restrooms, large warehouse with 1 GL door and 16' warehouse clear.

**15138 Goldenwest Circle**

**Size:** 3,000 SF

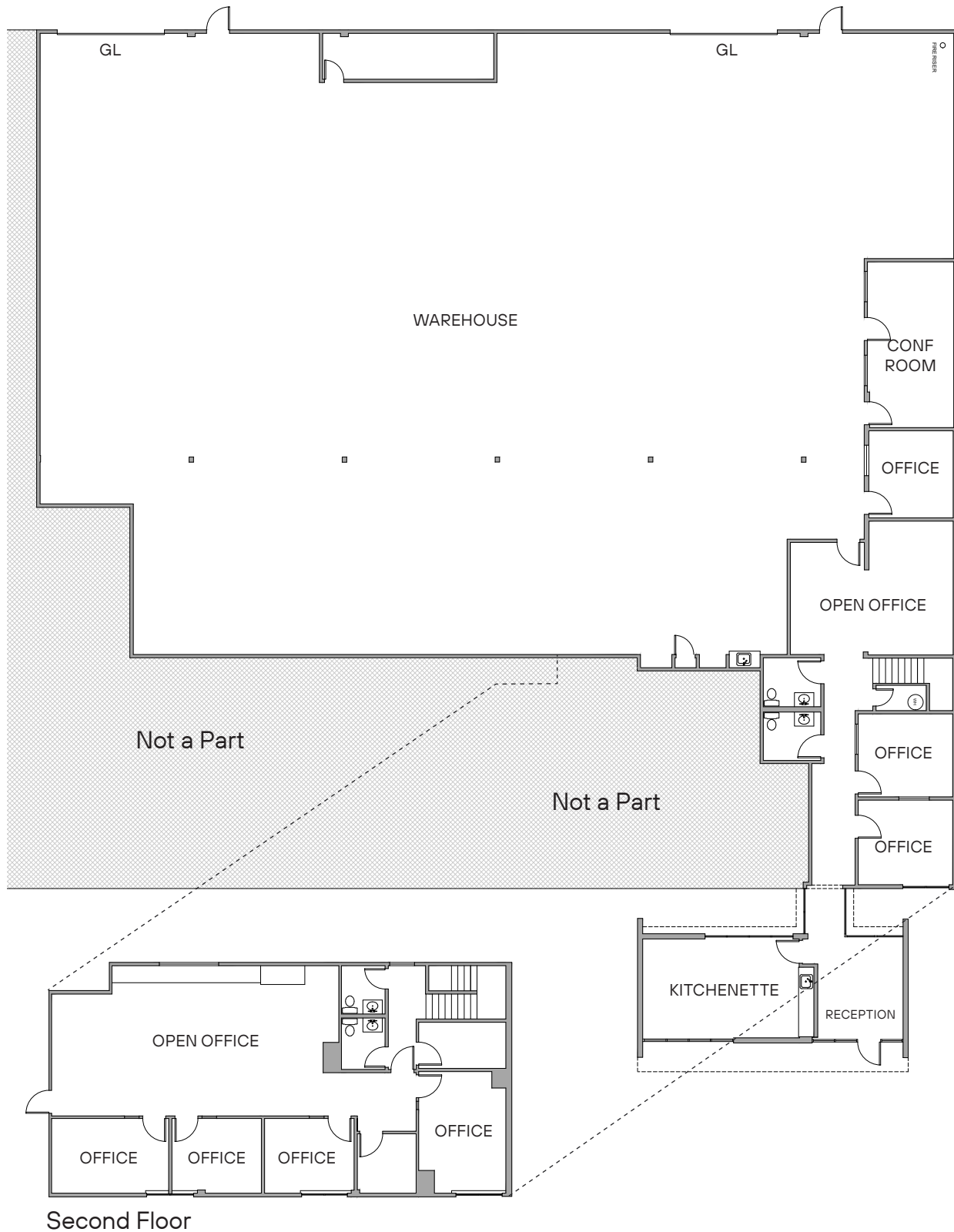
**Rate:** \$1.55/SF Modified Gross

**Available:** 9/1/2024

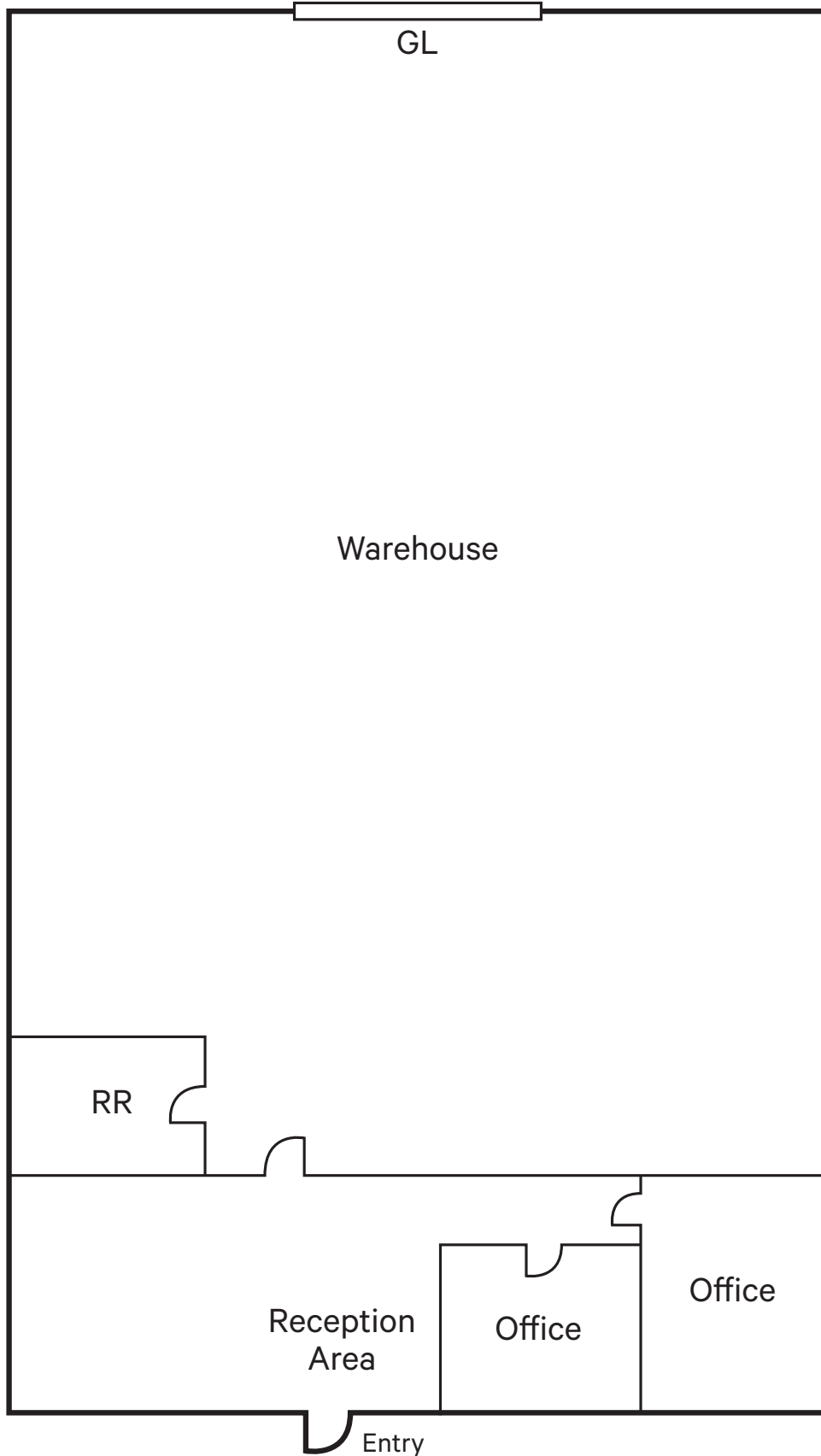
**Description:**

Approx. 1,015 SF office area, reception area, 3 private offices with break room and restroom, 16' warehouse clear, warehouse with 1 GL door.

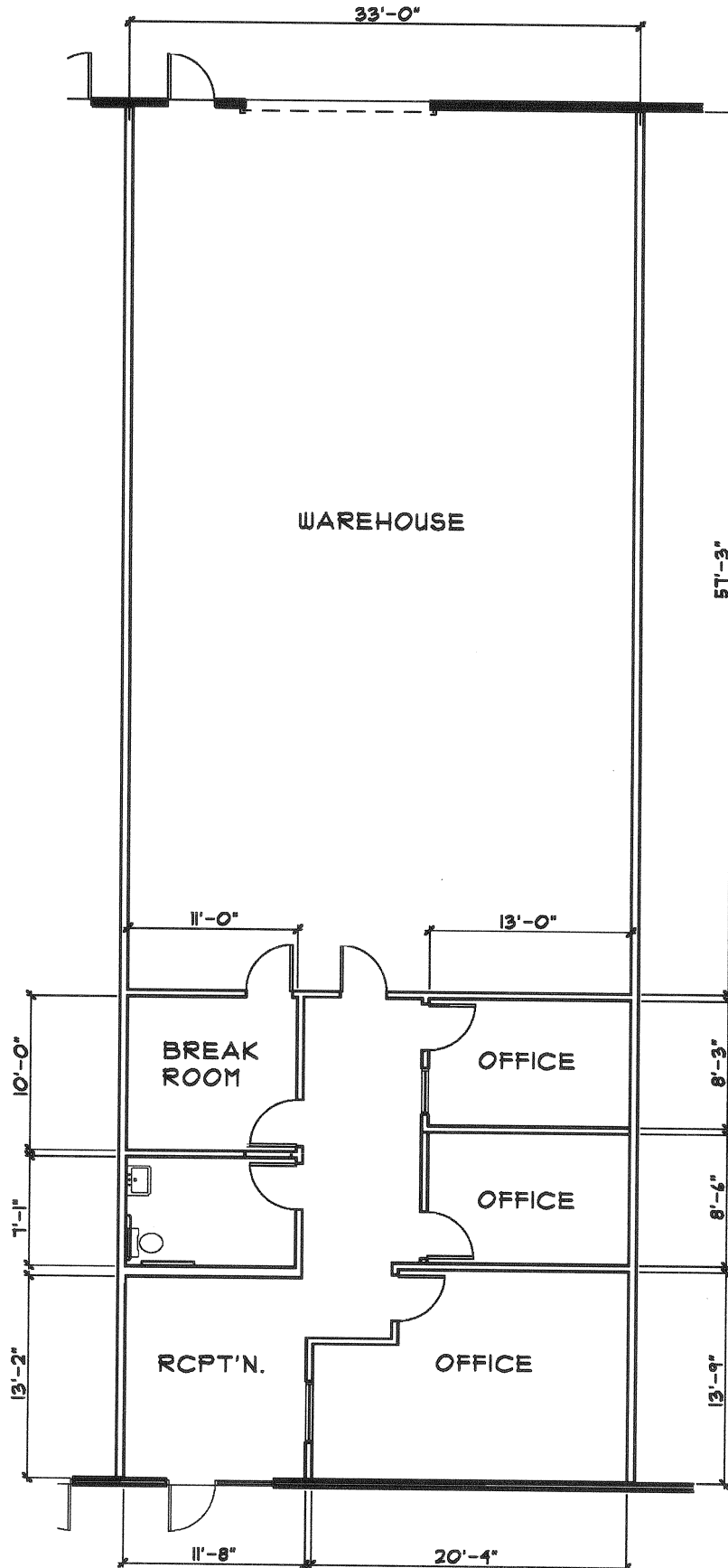
**7300 Bolsa Ave – 12,307 SF**



**15134 Goldenwest Circle – 3,000 SF**



**15138 Goldenwest Circle – 3,000 SF**



# SITE PLAN



**PHOTOS**

