

WARNER FAIRVIEW BUSINESS PARK

2300-2320 S. FAIRVIEW

2204-2230 S. FAIRVIEW

2901-2921 W. WARNER

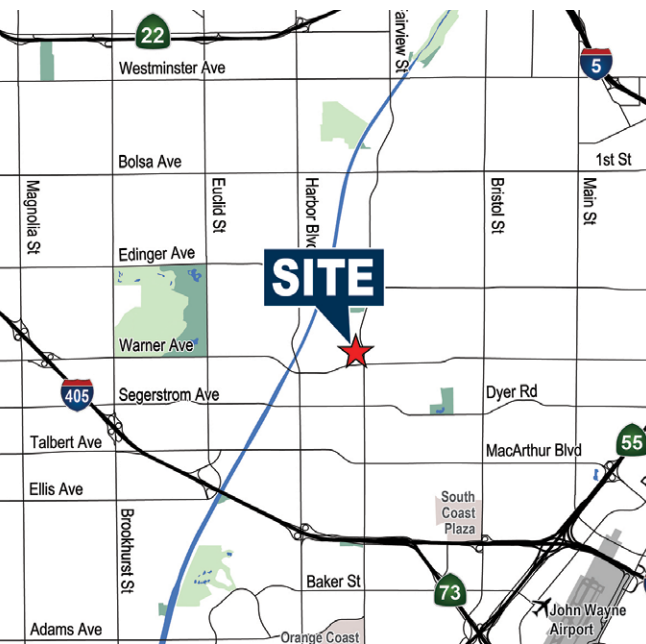
2201-2239 S. HURON

2901-2923 W. PENDLETON

2900-2922 W. PENDLETON

SANTA ANA, CA 92704

PROFESSIONALLY MANAGED BY:



INDUSTRIAL & OFFICE UNITS FOR LEASE

FOR ADDITIONAL
INFORMATION:

MIKE VERNICK, CCIM, SIOR
Senior Vice President
714.935.2354
Lic. #01420885
mvernick@voitco.com

TOM TERRY
Vice President
714.935.2313
Lic. #02069424
tterry@voitco.com

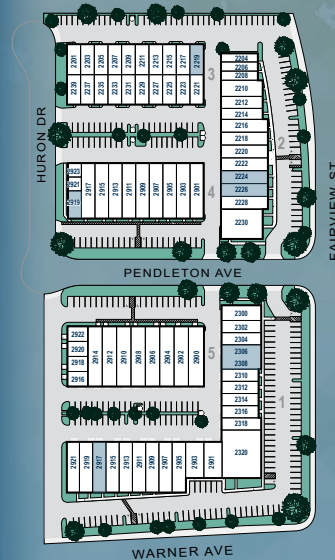
Voit
REAL ESTATE SERVICES

AVAILABLE UNITS

WAREHOUSE UNITS



ADDRESS	TOTAL SIZE	OFFICE SIZE	ASKING RATE PSF	MONTHLY BASE RENT	COMMENTS
2219 S. Huron Drive Santa Ana	1,237 SF	±219 SF	\$1.57 PSF	\$1,942.00 Plus CAM*	Office/reception area, restroom, and warehouse with ground level loading door.
2224 S. Fairview Street Santa Ana	1,540 SF	±265 SF	\$1.52 PSF	\$2,341.00 Plus CAM*	Office/reception area, restroom, and warehouse with ground level loading door.
2226 S. Fairview Street Santa Ana	1,848 SF	±322 SF	\$1.52 PSF	\$2,809.00 Plus CAM*	Office/reception area, restroom, and warehouse with ground level loading door.
2917 W. Warner Avenue Santa Ana	1,870 SF	±239 SF	\$1.52 PSF	\$2,842.00 Plus CAM*	Office/reception area, restroom, and warehouse with ground level loading door.
2306/2308 S. Fairview Street Santa Ana	2,640 SF	±515 SF	\$1.52 PSF	\$4,013.00 Plus CAM*	Reception area, two private offices, two restrooms, and warehouse with two ground level loading doors.
2224/2226 S. Fairview Street Santa Ana	3,388 SF	±587 SF	\$1.52 PSF	\$5,150.00 Plus CAM*	Office/reception area, private office, two restrooms, and warehouse with two ground level loading doors.



Available

OFFICE UNITS

ADDRESS	TOTAL SIZE	ASKING RATE PSF	MONTHLY BASE RENT	COMMENTS
2919 W. Pendleton Avenue Santa Ana	1,007 SF	\$1.34 PSF	\$1,349.00 Plus CAM*	Reception area, two private offices, storage closet, and restroom. Corner suite

* There is an additional monthly CAM fee (Common Area Maintenance) equal to approximately \$0.22 PSF, subject to change.

MIKE VERNICK, CCIM, SIOR

Senior Vice President 714.935.2354 Lic. #01420885 mvernick@voitco.com

TOM TERRY

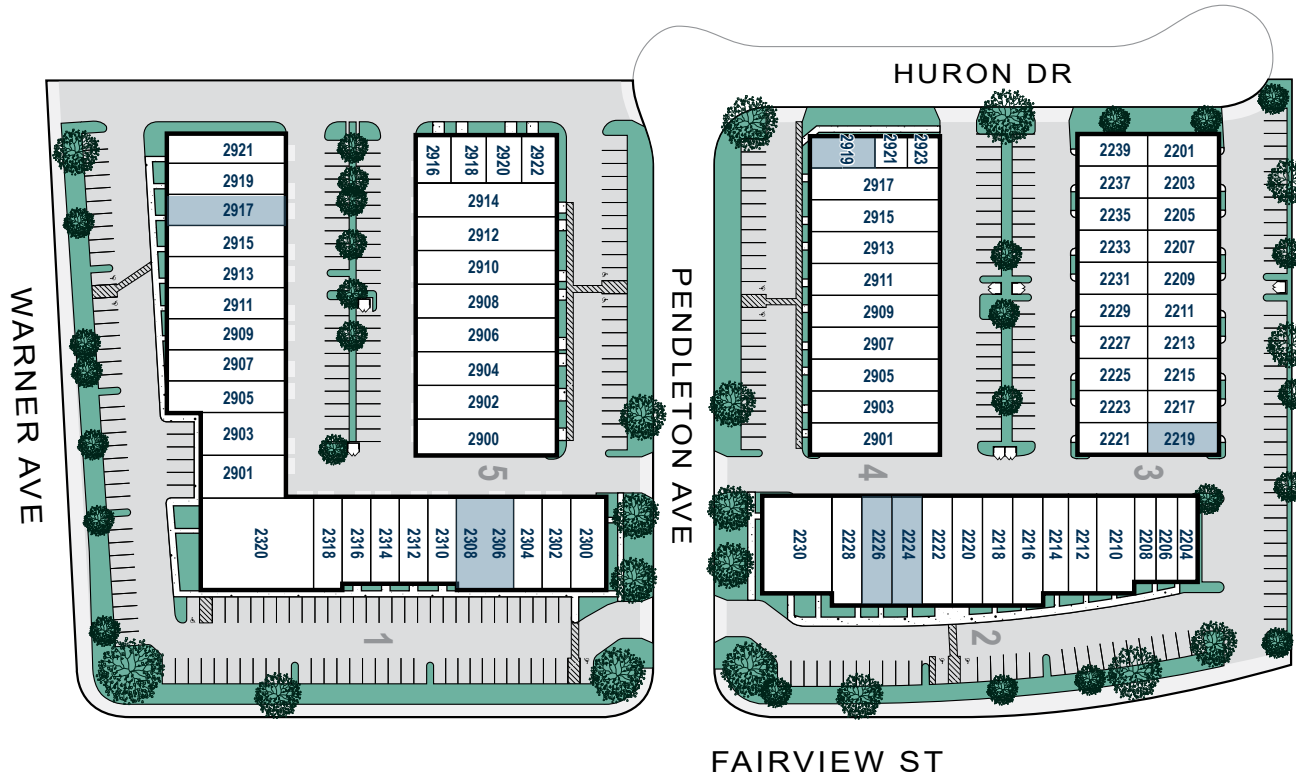
Vice President 714.935.2313 Lic. #02069424 tterry@voitco.com

Voit
REAL ESTATE SERVICES

2400 E. Katella Avenue, Suite 750
Anaheim, CA 92806
www.voitco.com

The information contained herein is believed to be accurate but is not warranted as to its accuracy and may change or be updated without notice. Seller or landlord makes no representation as to the environmental condition of the property and recommends purchaser's or tenant's independent investigation. Licensed as a Real Estate Broker and Salesperson by the DRE. ©2026 Voit Real Estate Services, Inc. All Rights Reserved. Lic. #01991785

SITE PLAN



■ Available

* Site plan may not be to scale.



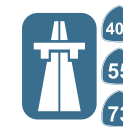
Pride of Ownership Asset
Professionally Managed
Business Park (on site)



±126,715 SF Office and
Industrial Units
(Units can be combined to
accommodate a variety of sizes.)



Major Street
Frontage and
Identity



405
55
73
Excellent
Access
to Freeways



2.4 / 1,000
Parking Ratio



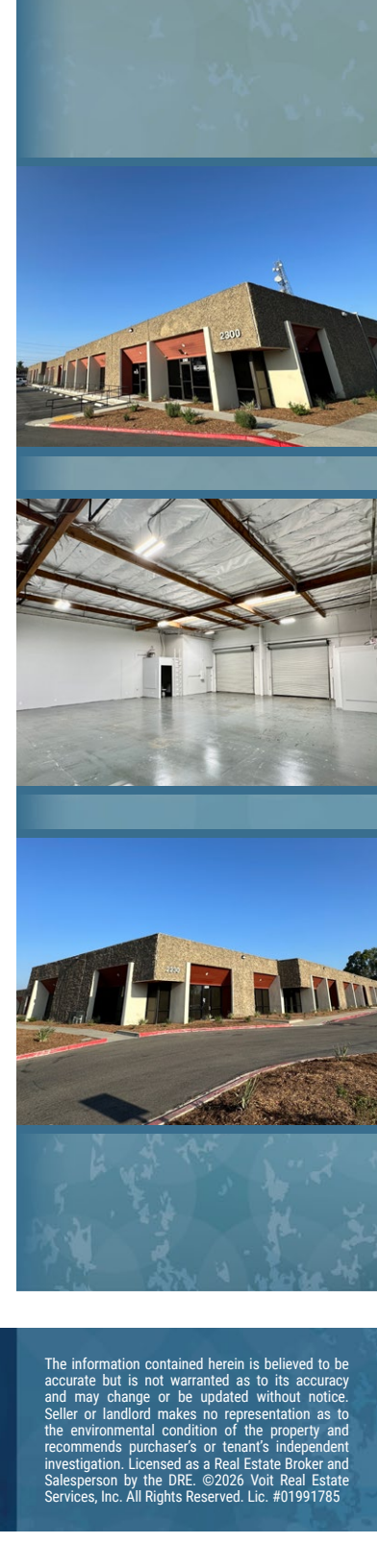
14' min.



Functional Site Loading
and Circulation



60-200 AMPS, Distributed
110/208 Volt 3 Phase Power
(verify)



MIKE VERNICK, CCIM, SIOR

Senior Vice President 714.935.2354 Lic. #01420885 mvernick@voitco.com

TOM TERRY

Vice President 714.935.2313 Lic. #02069424 terry@voitco.com

Voit

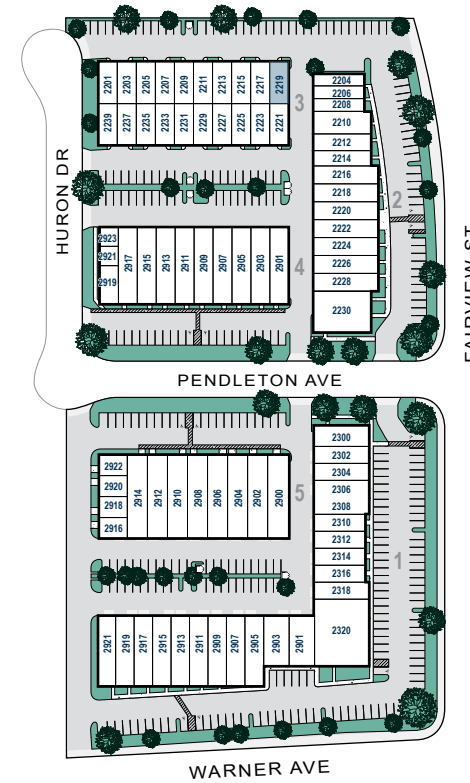
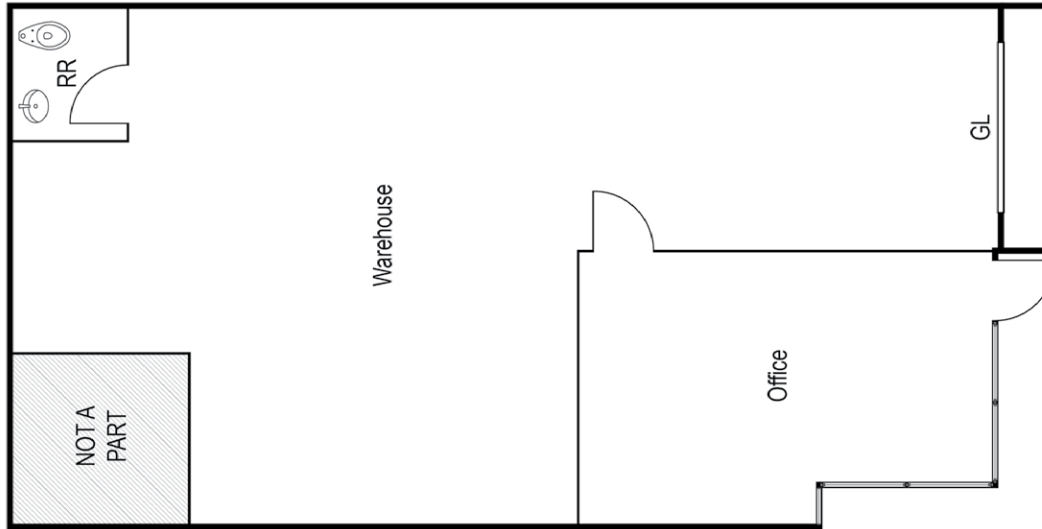
REAL ESTATE SERVICES

2400 E. Katella Avenue, Suite 750
Anaheim, CA 92806

www.voitco.com

The information contained herein is believed to be accurate but is not warranted as to its accuracy and may change or be updated without notice. Seller or landlord makes no representation as to the environmental condition of the property and recommends purchaser's or tenant's independent investigation. Licensed as a Real Estate Broker and Salesperson by the DRE. ©2026 Voit Real Estate Services, Inc. All Rights Reserved. Lic. #01991785

2219 S. HURON DRIVE



* Floor plan and site plan may not be to scale.

UNIT FEATURES:

- » ±1,237 SF Industrial Unit
- » ± 219 SF of Office Space
- » 1 (one) Restroom
- » 1 (one) 10' x 10' Ground Level Loading Door
- » 14' of Minimum Warehouse Clearance
- » Updated 100 Amps, 120/208 Volt, 3 Phase Power (verify)

- » Drive Around Building
- » 2.4 / 1,000 Parking Ratio
- » Natural Gas Service
- » M1 Zoning (verify)


±1,237 SF


±219 SF

 14'
MIN.


100 AMPS (VERIFY)


1 GL

MIKE VERNICK, CCIM, SIOR

Senior Vice President 714.935.2354 Lic. #01420885 mvernick@voitco.com

TOM TERRY

Vice President 714.935.2313 Lic. #02069424 terry@voitco.com

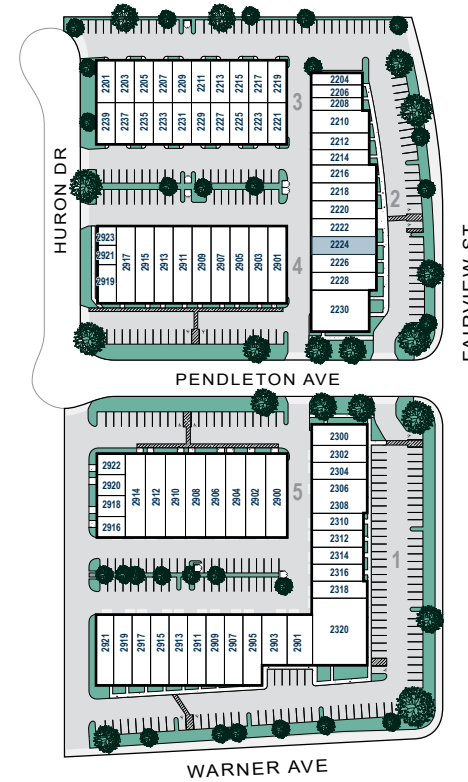
Voit
REAL ESTATE SERVICES

2400 E. Katella Avenue, Suite 750
Anaheim, CA 92806

www.voitco.com

The information contained herein is believed to be accurate but is not warranted as to its accuracy and may change or be updated without notice. Seller or landlord makes no representation as to the environmental condition of the property and recommends purchaser's or tenant's independent investigation. Licensed as a Real Estate Broker and Salesperson by the DRE. ©2026 Voit Real Estate Services, Inc. All Rights Reserved. Lic. #01991785

2224 S. FAIRVIEW STREET



±1,540 SF

±265 SF

14' MIN.



100 AMPS (VERIFY)



1 GL

UNIT FEATURES:

- » ±1,540 SF Industrial Unit
- » ± 265 SF of Office Space
- » 1 (one) Restroom
- » 1 (one) 10' x 10' Ground Level Loading Door
- » 14' of Minimum Warehouse Clearance
- » Updated 100 Amps, 120/208 Volt, 3 Phase Power (verify)

* Floor plan and site plan may not be to scale.

- » Drive Around Building
- » 2.4 / 1,000 Parking Ratio
- » Natural Gas Service
- » M1 Zoning (verify)

MIKE VERNICK, CCIM, SIOR

Senior Vice President 714.935.2354 Lic. #01420885 mvernick@voitco.com

TOM TERRY

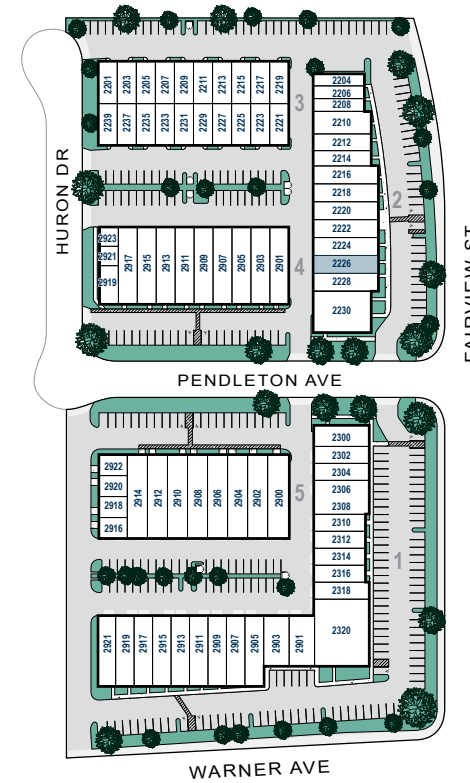
Vice President 714.935.2313 Lic. #02069424 tterry@voitco.com

Voit
REAL ESTATE SERVICES

2400 E. Katella Avenue, Suite 750
Anaheim, CA 92806
www.voitco.com

The information contained herein is believed to be accurate but is not warranted as to its accuracy and may change or be updated without notice. Seller or landlord makes no representation as to the environmental condition of the property and recommends purchaser's or tenant's independent investigation. Licensed as a Real Estate Broker and Salesperson by the DRE. ©2026 Voit Real Estate Services, Inc. All Rights Reserved. Lic. #01991785

2226 S. FAIRVIEW STREET



* Floor plan and site plan may not be to scale.

UNIT FEATURES:

- » ±1,848 SF Industrial Unit
- » ± 322 SF of Office Space
- » 1 (one) Restroom
- » 1 (one) 10' x 10' Ground Level Loading Door
- » 14' of Minimum Warehouse Clearance
- » Updated 100 Amps, 120/208 Volt, 3 Phase Power (verify)

- » Drive Around Building
- » 2.4 / 1,000 Parking Ratio
- » Natural Gas Service
- » M1 Zoning (verify)


±1,848 SF


±322 SF

 14'
MIN.


100 AMPS (VERIFY)


1 GL

MIKE VERNICK, CCIM, SIOR

Senior Vice President 714.935.2354 Lic. #01420885 mvernick@voitco.com

TOM TERRY

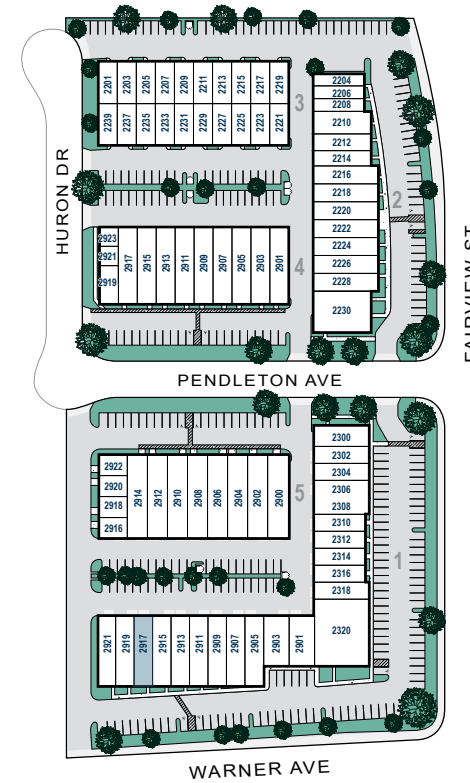
Vice President 714.935.2313 Lic. #02069424 terry@voitco.com

Voit
REAL ESTATE SERVICES

2400 E. Katella Avenue, Suite 750
Anaheim, CA 92806
www.voitco.com

The information contained herein is believed to be accurate but is not warranted as to its accuracy and may change or be updated without notice. Seller or landlord makes no representation as to the environmental condition of the property and recommends purchaser's or tenant's independent investigation. Licensed as a Real Estate Broker and Salesperson by the DRE. ©2026 Voit Real Estate Services, Inc. All Rights Reserved. Lic. #01991785

2917 W. WARNER AVENUE



* Floor plan and site plan may not be to scale.

UNIT FEATURES:

- » ±1,870 SF Industrial Unit
- » ± 239 SF of Office Space
- » 1 (one) Restroom
- » 1 (one) 10' x 10' Ground Level Loading Door
- » 14' of Minimum Warehouse Clearance
- » Updated 100 Amps, 120/208 Volt, 3 Phase Power (verify)

- » Drive Around Building
- » 2.4 / 1,000 Parking Ratio
- » Natural Gas Service
- » M1 Zoning (verify)


±1,870 SF


±239 SF

 14'
MIN.


100 AMPS (VERIFY)


1 GL

MIKE VERNICK, CCIM, SIOR

Senior Vice President 714.935.2354 Lic. #01420885 mvernick@voitco.com

TOM TERRY

Vice President 714.935.2313 Lic. #02069424 terry@voitco.com

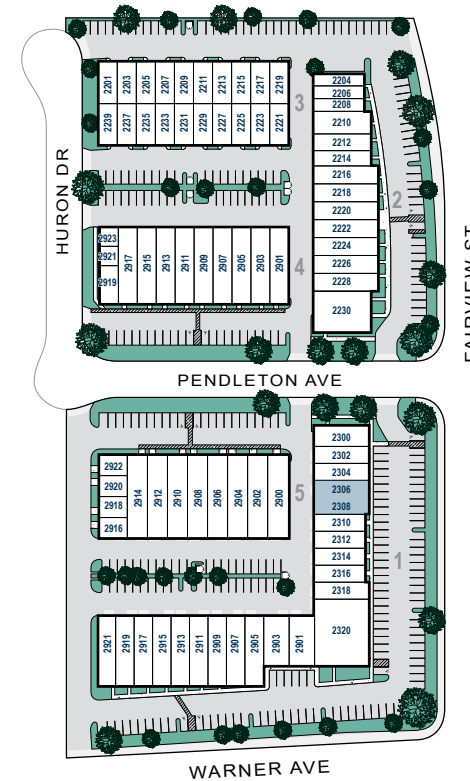
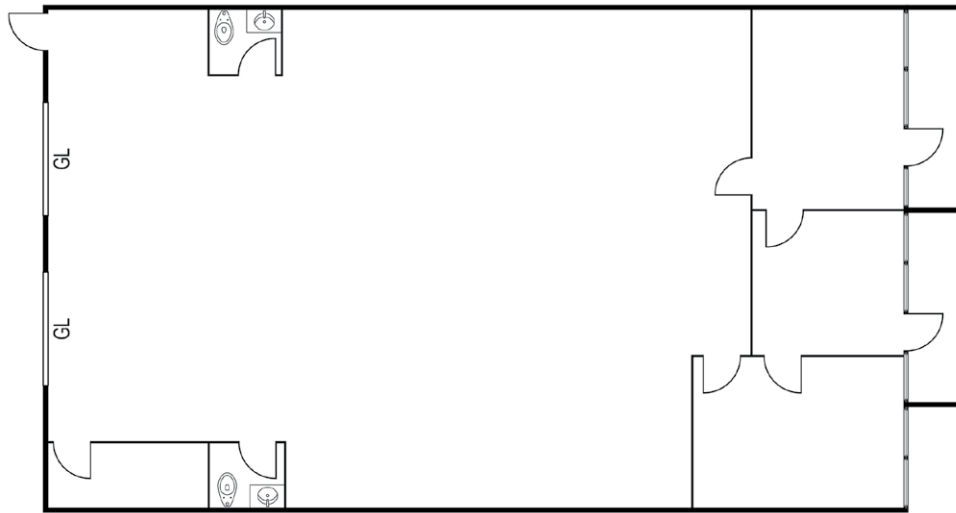
Voit
REAL ESTATE SERVICES

2400 E. Katella Avenue, Suite 750
Anaheim, CA 92806

www.voitco.com

The information contained herein is believed to be accurate but is not warranted as to its accuracy and may change or be updated without notice. Seller or landlord makes no representation as to the environmental condition of the property and recommends purchaser's or tenant's independent investigation. Licensed as a Real Estate Broker and Salesperson by the DRE. ©2026 Voit Real Estate Services, Inc. All Rights Reserved. Lic. #01991785

2306/2308 S. FAIRVIEW STREET




±2,640 SF


±515 SF

 14'
MIN.



100 AMPS (VERIFY)



2 GL

UNIT FEATURES:

- » ±2,640 SF Industrial Unit
- » ± 515 SF of Office Space
- » 2 (two) Restrooms
- » 2 (two) Ground Level Loading Doors
- » Updated 100 Amps, 120/208 Volt, 3 Phase Power (verify)
- » Drive Around Building
- » 2.4 / 1,000 Parking Ratio
- » Natural Gas Service
- » M1 Zoning (verify)

* Floor plan and site plan may not be to scale.

MIKE VERNICK, CCIM, SIOR

Senior Vice President 714.935.2354 Lic. #01420885 mvernick@voitco.com

TOM TERRY

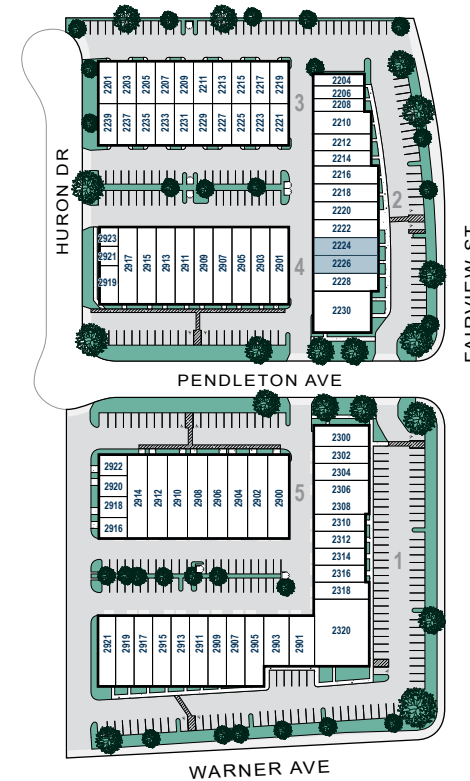
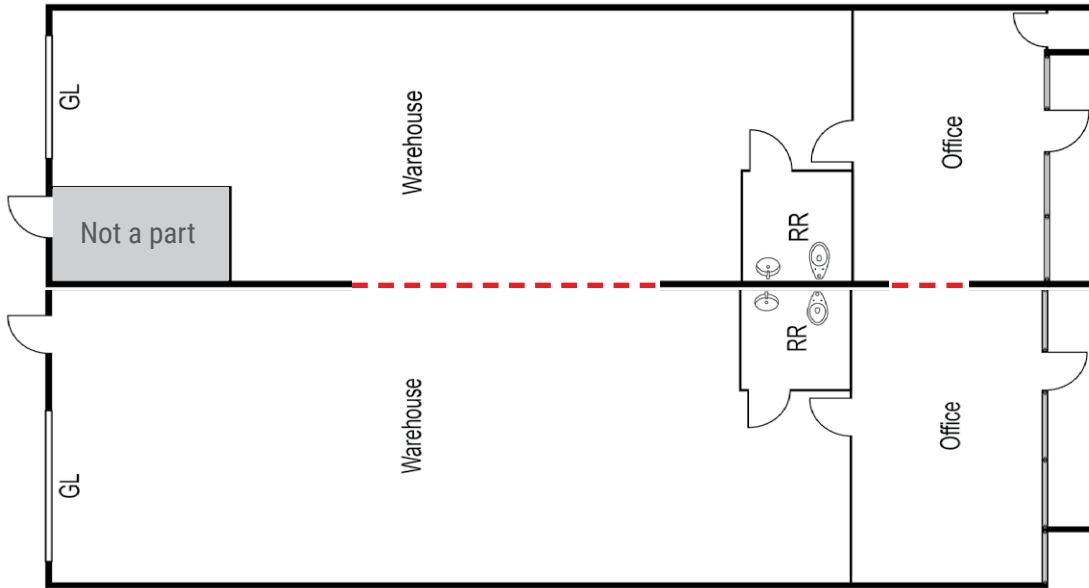
Vice President 714.935.2313 Lic. #02069424 terry@voitco.com

Voit
REAL ESTATE SERVICES

2400 E. Katella Avenue, Suite 750
Anaheim, CA 92806
www.voitco.com

The information contained herein is believed to be accurate but is not warranted as to its accuracy and may change or be updated without notice. Seller or landlord makes no representation as to the environmental condition of the property and recommends purchaser's or tenant's independent investigation. Licensed as a Real Estate Broker and Salesperson by the DRE. ©2026 Voit Real Estate Services, Inc. All Rights Reserved. Lic. #01991785

2224/2226 FAIRVIEW STREET




±3,388 SF


±587 SF

 14'
MIN.


100 AMPS (VERIFY)



1 GL

UNIT FEATURES:

- » ±3,388 SF Industrial Unit
- » ± 587 SF of Office Space
- » 2 (two) Restrooms
- » 2 (two) 10' x 10' Ground Level Loading Doors
- » 14' of Minimum Warehouse Clearance
- » Updated 100 Amps, 120/208 Volt, 3 Phase Power (verify)

* Floor plan and site plan may not be to scale.
-- Can be removed to provide unit to unit access.

- » Drive Around Building
- » 2.4 / 1,000 Parking Ratio
- » Natural Gas Service
- » M1 Zoning (verify)

MIKE VERNICK, CCIM, SIOR

Senior Vice President 714.935.2354 Lic. #01420885 mvernick@voitco.com

TOM TERRY

Vice President 714.935.2313 Lic. #02069424 terry@voitco.com

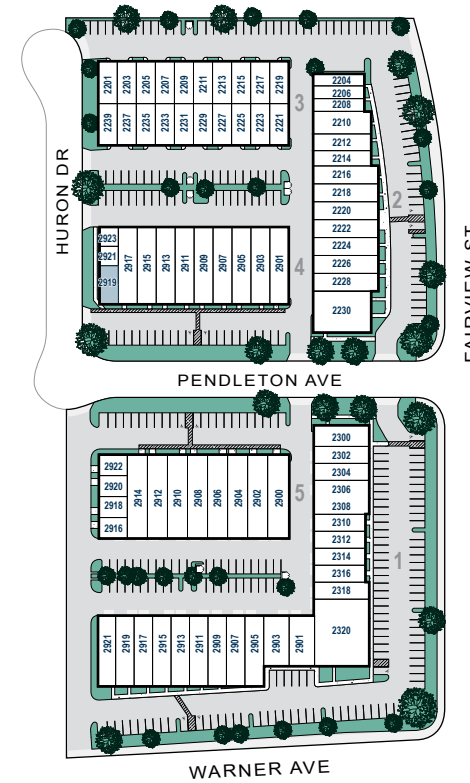
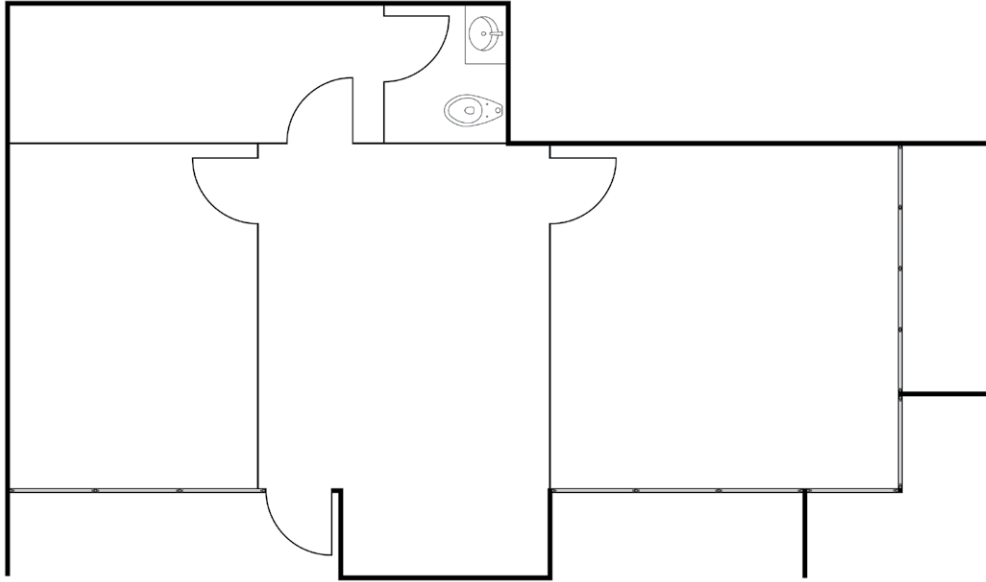
Voit
REAL ESTATE SERVICES

2400 E. Katella Avenue, Suite 750
Anaheim, CA 92806

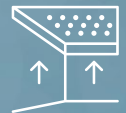
www.voitco.com

The information contained herein is believed to be accurate but is not warranted as to its accuracy and may change or be updated without notice. Seller or landlord makes no representation as to the environmental condition of the property and recommends purchaser's or tenant's independent investigation. Licensed as a Real Estate Broker and Salesperson by the DRE. ©2026 Voit Real Estate Services, Inc. All Rights Reserved. Lic. #01991785

2919 W. PENDLETON AVENUE



±1,007 SF



8' FINISHED CEILING



100 AMPS (VERIFY)

UNIT FEATURES:

- » ±1,007 SF Office Unit
- » 1 (one) Restroom
- » 2 (two) Private Offices
- » Corner Suite
- » Storage Closet
- » Drive Around Building
- » 2.4 / 1,000 Parking Ratio
- » Natural Gas Service
- » M1 Zoning (verify)

* Floor plan and site plan may not be to scale.

MIKE VERNICK, CCIM, SIOR

Senior Vice President 714.935.2354 Lic. #01420885 mvernick@voitco.com

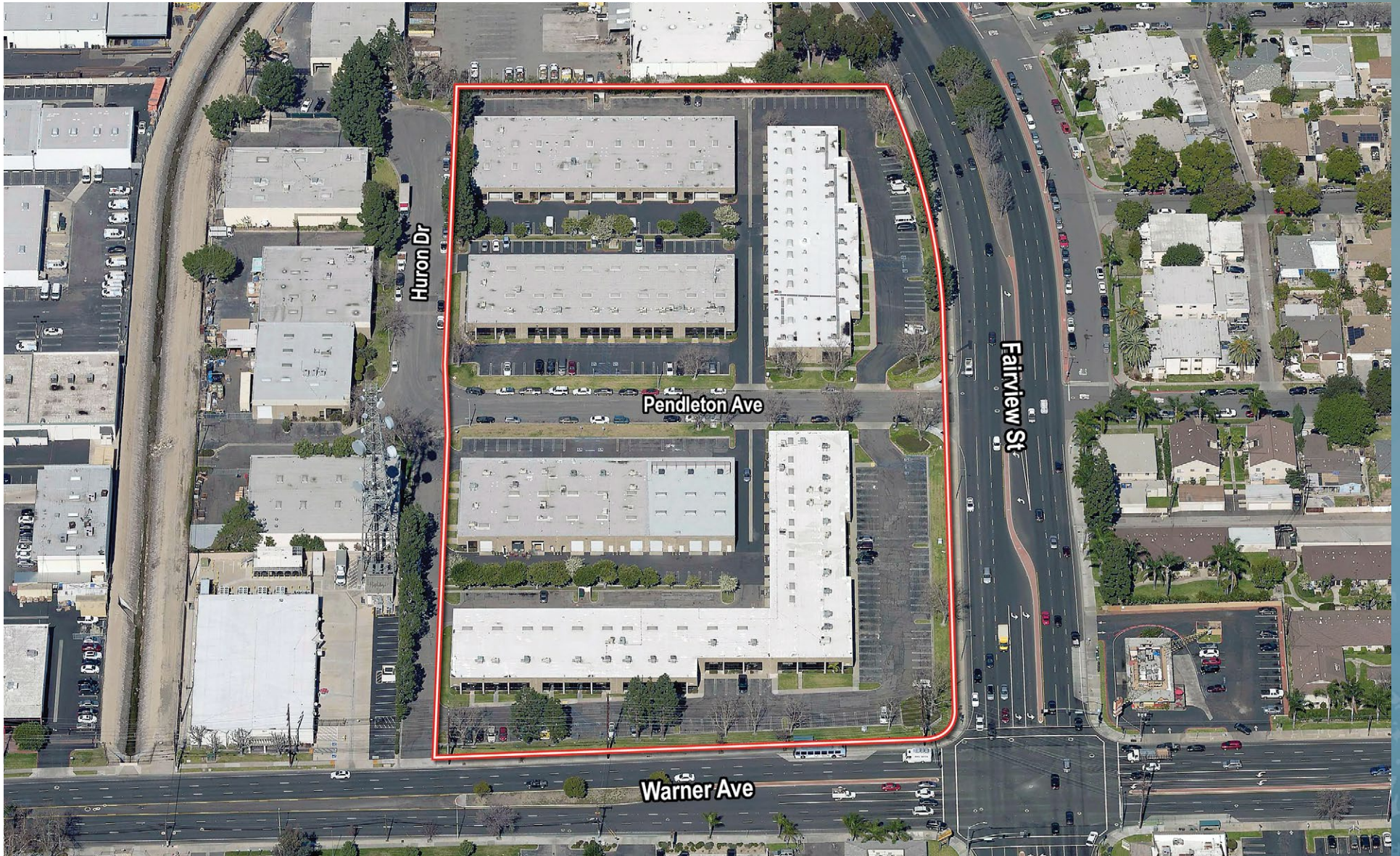
TOM TERRY

Vice President 714.935.2313 Lic. #02069424 terry@voitco.com

Voit
REAL ESTATE SERVICES

2400 E. Katella Avenue, Suite 750
Anaheim, CA 92806
www.voitco.com

The information contained herein is believed to be accurate but is not warranted as to its accuracy and may change or be updated without notice. Seller or landlord makes no representation as to the environmental condition of the property and recommends purchaser's or tenant's independent investigation. Licensed as a Real Estate Broker and Salesperson by the DRE. ©2026 Voit Real Estate Services, Inc. All Rights Reserved. Lic. #01991785



MIKE VERNICK, CCIM, SIOR

Senior Vice President 714.935.2354 Lic. #01420885 mvernick@voitco.com

TOM TERRY

Vice President 714.935.2313 Lic. #02069424 terry@voitco.com

Voit
REAL ESTATE SERVICES

2400 E. Katella Avenue, Suite 750

Anaheim, CA 92806

www.voidco.com

The information contained herein is believed to be accurate but is not warranted as to its accuracy and may change or be updated without notice. Seller or landlord makes no representation as to the environmental condition of the property and recommends purchaser's or tenant's independent investigation. Licensed as a Real Estate Broker and Salesperson by the DRE. ©2026 Voit Real Estate Services, Inc. All Rights Reserved. Lic. #01991785