




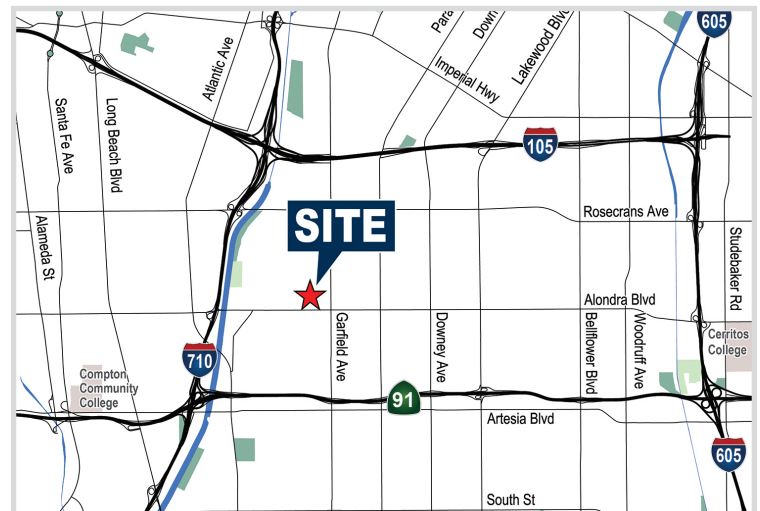
GARFIELD PACIFIC PARAMOUNT, CA

FOR LEASE



PROPERTY FEATURES

- 296,370 SF Multi-Tenant Industrial Park
- ±1,300-43,000 SF Industrial Units
- Ground Level/Dock High Loading (on select Units)
- Professionally Managed and Maintained Project
- Excellent Access to    Freeways and Port of Long Beach



LOREN CARGILE
Vice President | Partner
714.935.2306
Lic. #01431329
lcargile@voitco.com

BARRY WALSH
Vice President | Partner
714.935.2309
Lic. #01213417
bwalsh@voitco.com

Voit
REAL ESTATE SERVICES
www.VoitCo.com

Professionally Owned
and Managed By:

bendetti
www.bendetti.com

2020 Main Street, Suite 100, Irvine, CA 92614 • 949.851.5100 • 949.261.9092 Fax

www.VoitCo.com

The information contained herein has been obtained from sources we deem reliable. While we have no reason to doubt its accuracy, we do not guarantee it. Licensed as Real Estate Salespersons by the DRE. ©2023 Voit Real Estate Services, Inc. All Rights Reserved. License #01991785.

GARFIELD PACIFIC PARAMOUNT, CA

FOR LEASE

ADDRESS	UNIT SIZE	ASKING RATE PSF *	BASE RENT	COMMENTS
15250 Texaco Ave.	9,685 SF	\$1.30/SF NNN	\$12,590.50/mo	Reception, Two Private Offices, Open Office Area, Three Restrooms, Warehouse, Two Ground Level Doors

**Additional \$0.23/sf applies for triple net expenses*



LOREN CARGILE
Vice President | Partner
714.935.2306
Lic. #01431329
lcargile@voitco.com

BARRY WALSH
Vice President | Partner
714.935.2309
Lic. #01213417
bwalsh@voitco.com

Voit
REAL ESTATE SERVICES
www.VoitCo.com

Professionally Owned
and Managed By:

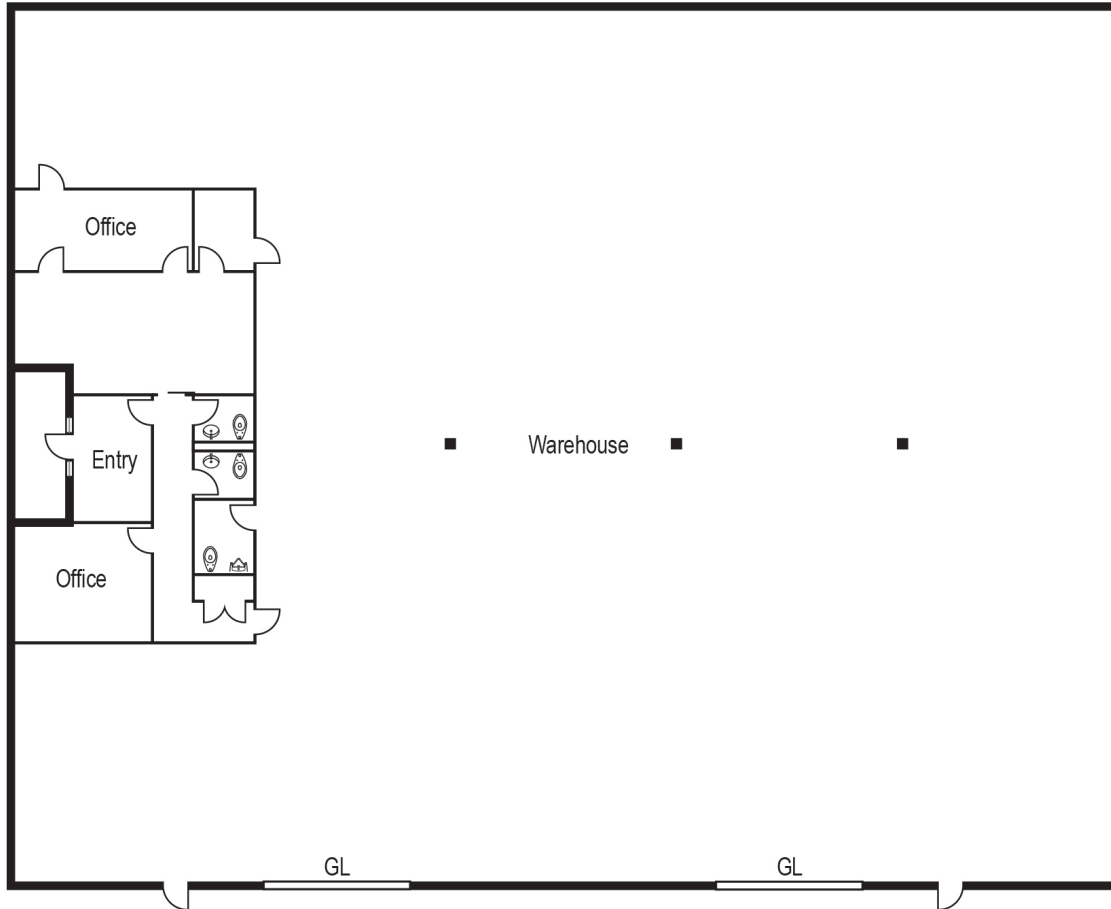
bendetti
www.bendetti.com

2020 Main Street, Suite 100, Irvine, CA 92614 • 949.851.5100 • 949.261.9092 Fax

www.VoitCo.com

The information contained herein has been obtained from sources we deem reliable. While we have no reason to doubt its accuracy, we do not guarantee it. Licensed as Real Estate Salespersons by the DRE. ©2023 Voit Real Estate Services, Inc. All Rights Reserved. License #01991785.

FLOOR PLANS 15250 Texaco Ave.



LOREN CARGILE
Vice President | Partner
714.935.2306
Lic. #01431329
lcargile@voitco.com

BARRY WALSH
Vice President | Partner
714.935.2309
Lic. #01213417
bwalsh@voitco.com

Voit
REAL ESTATE SERVICES
www.VoitCo.com

*Professionally Owned
and Managed By:*

bendetti
www.bendetti.com
www.VoitCo.com