

VALLEY VIEW COMMERCE CENTER

14515 - 14565 VALLEY VIEW STREET
SANTA FE SPRINGS, CA 90670

919 - 4,062
SQUARE FEET



FOR LEASE WAREHOUSE, OFFICE & RETAIL

FOR ADDITIONAL INFORMATION:

HAYDEN SOCCI
Senior Vice President | Partner
714.935.2379
hsocci@voitco.com
Lic #01705038

Voit
REAL ESTATE SERVICES

2400 E. Katella Avenue, Suite 750, Anaheim, CA 92806 • 714.978.7880 • 714.978.9431 Fax • www.VoitCo.com

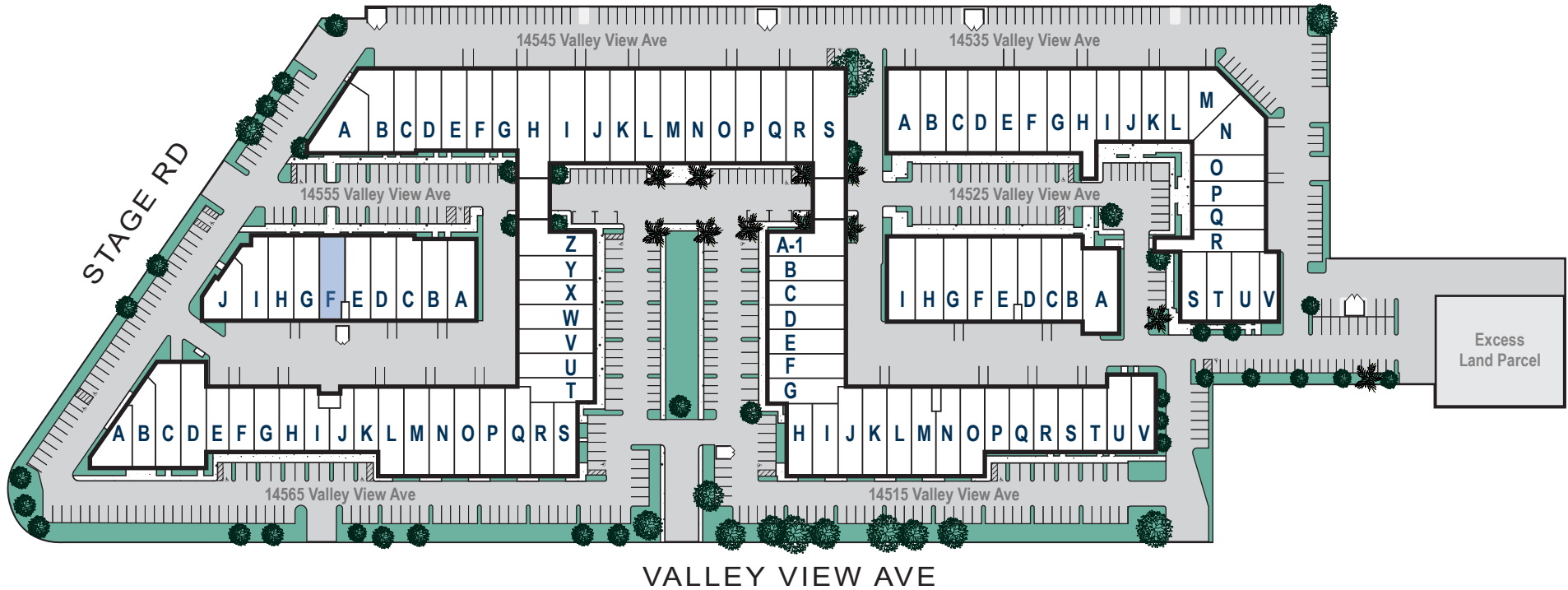
The information contained herein has been obtained from sources we deem reliable. While we have no reason to doubt its accuracy, we do not guarantee it. Licensed as Real Estate Salespersons by the DRE. ©2025 Voit Real Estate Services, Inc. All Rights Reserved. License #01991785.

AVAILABILITY

ADDRESS	SUITE	TOTAL SIZE	OFFICE SIZE	ASKING RATE PSF	MONTHLY BASE RENT	COMMENTS
14555 Valley View Street Santa Fe Springs, CA	F	1,898 Sq. Ft.	±300 Sq. Ft.	\$1.65 PSF	\$3,132.00	Reception, private office, coffee bar, restroom, and large warehouse with ground level loading door.

** There is an additional monthly CAM fee (Common Area Maintenance) of approximately \$0.12 per square foot, subject to change.*

SITE PLAN



Pride of Ownership Asset
Professionally Managed
Business Park (on site)



±210,098 SF Office,
Industrial & Retail Suites
 (Units can be combined to
 accommodate a variety of
 sizes.)



Major Street
Frontage and
Identity



Excellent Access
to Freeways



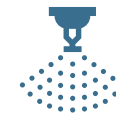
2.52 / 1,000
Parking
Ratio



16' min.
Warehouse
Clearance

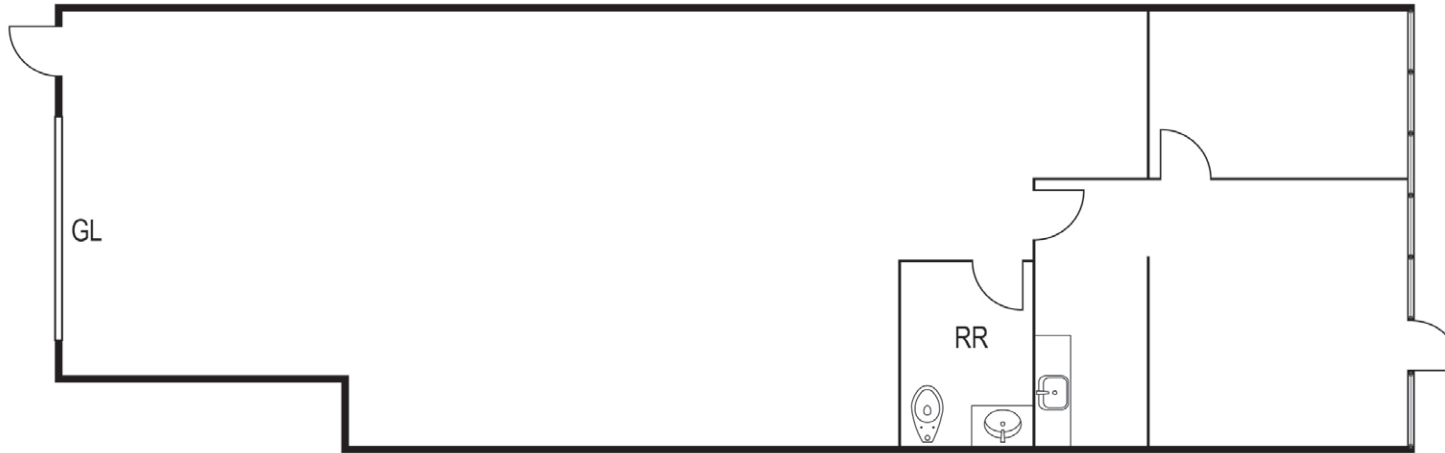


Functional Site Loading
and Circulation



Fire Sprinklers

14555 VALLEY VIEW STREET, SUITE F




±1,898 SQ. FT.


±300 SQ. FT.

 16'
MIN.

** Floor plan is approximate and may not be to scale.*

UNIT FEATURES:



- » ±1,898 Sq. Ft. Industrial Suite
- » ±300 Sq. Ft. of Office
- » One (1) Private Office
- » One (1) Restroom
- » One (1) Ground Level Loading Door
- » 16' of Minimum Warehouse Clearance
- » 2.52 / 1,000 Parking Ratio
- » Fire Sprinklers


FIRE SPRINKLERS



1 GL

HAYDEN SOCCI
Senior Vice President | Partner
714.935.2379
hsocci@voitco.com
Lic #01705038

Voit
REAL ESTATE SERVICES

2400 E. Katella Avenue, Suite 750
Anaheim, CA 92806
www.voitco.com

The information contained herein is believed to be accurate but is not warranted as to its accuracy and may change or be updated without notice. Seller or landlord makes no representation as to the environmental condition of the property and recommends purchaser's or tenant's independent investigation. Licensed as a Real Estate Broker and Salesperson by the DRE. ©2024 Voit Real Estate Services, Inc. All Rights Reserved. Lic. #01991785



PROPERTY PHOTOS

