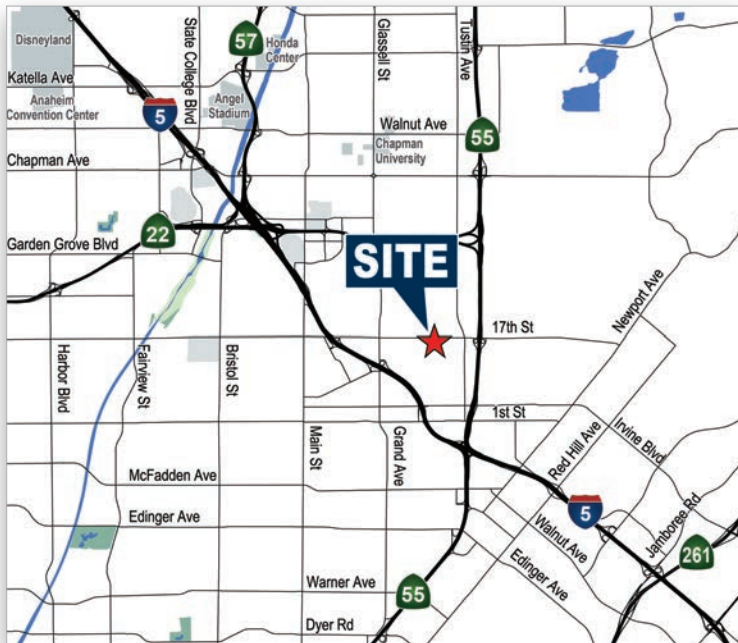


AVAILABLE FOR LEASE | ±2,500 - 4,523 SF

1950 E. 17TH STREET | SANTA ANA | CA



FEATURES

- Move-in-ready office space
- Outdoor seating area
- Elevator-served
- Building top signage
- Numerous amenities
- Close proximity to Santa Ana medical corridor
- Easy access to 55, 5, 22 & 91 freeways
- Abundant FREE Parking (6.10/1,000 SF)

Chris Drzyzga, SIOR
Senior Vice President | Partner

949.263.5303

ChrisD@voitco.com

Lic. #01926212

2020 Main Street, Suite 100, Irvine, California 92614

949.851.5100 | 949.261.9092 Fax | Lic #01991785 | www.VoitCo.com



Voit

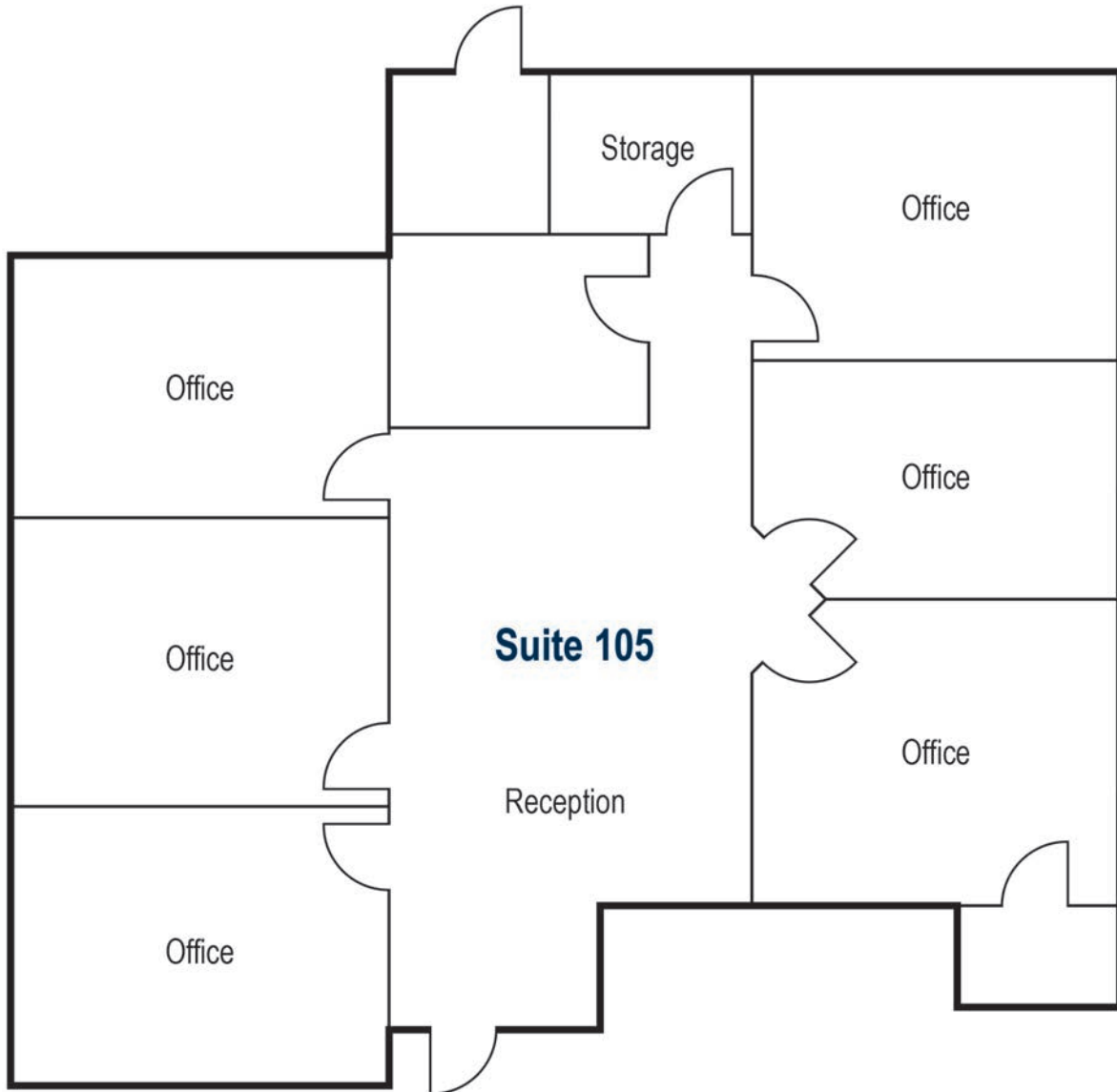
REAL ESTATE SERVICES

The information contained herein has been obtained from sources we deem reliable. While we have no reason to doubt its accuracy, we do not guarantee it. Licensed as Real Estate Salespersons by the DRE.
©2024 Voit Real Estate Services, Inc. All Rights Reserved. License #01991785.

AVAILABLE FOR LEASE | ±2,500 - 4,523 SF

1950 E. 17TH STREET | SANTA ANA | CA

1ST FLOOR - SUITE 105 | ±2,500 SF



* PLAN NOT TO SCALE, TENANT TO VERIFY.

Chris Drzyzga, SIOR
Senior Vice President | Partner

949.263.5303

ChrisD@voitco.com

Lic. #01926212



2020 Main Street, Suite 100, Irvine, California 92614

949.851.5100 | 949.261.9092 Fax | Lic #01991785 | www.VoitCo.com

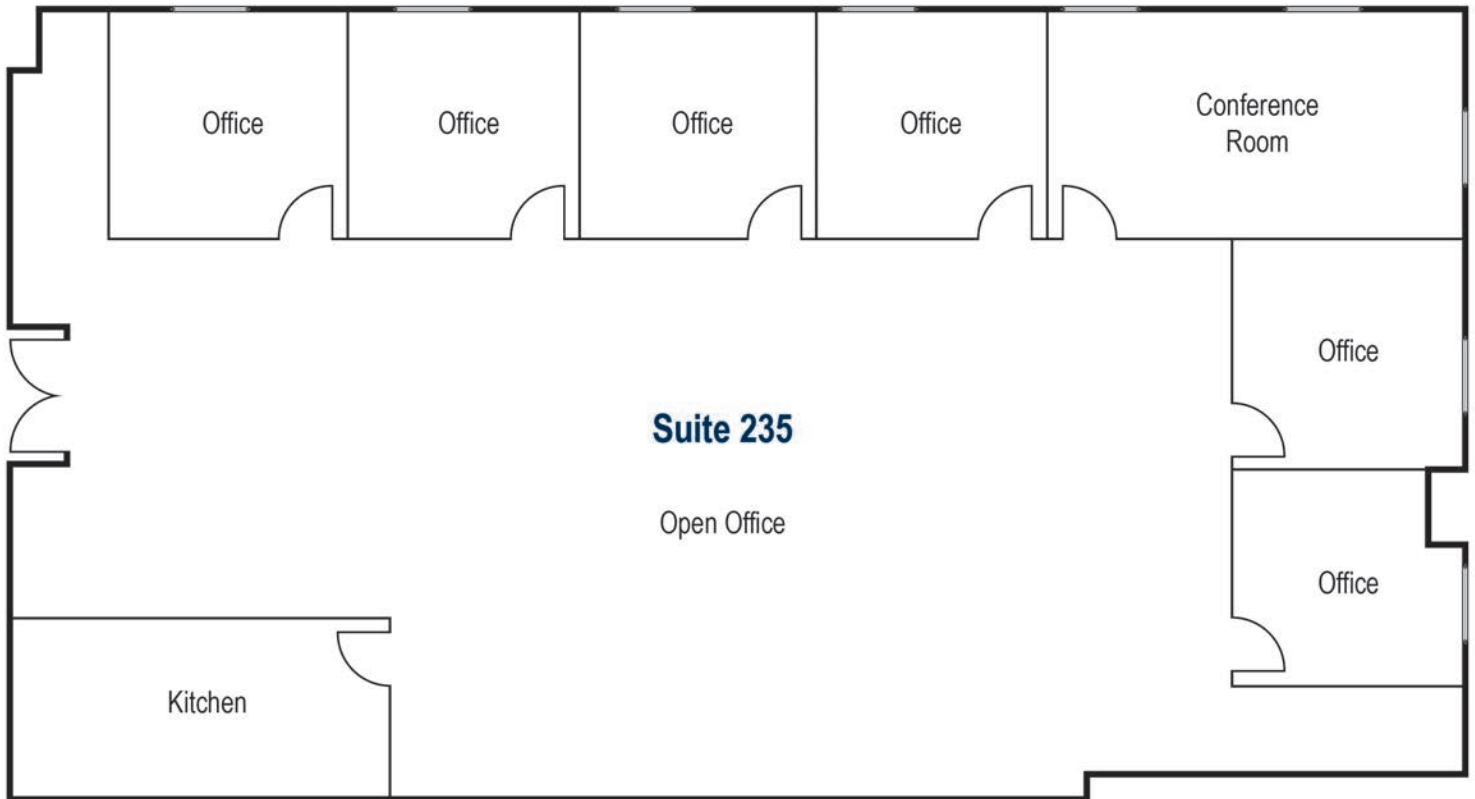
The information contained herein has been obtained from sources we deem reliable. While we have no reason to doubt its accuracy, we do not guarantee it. Licensed as Real Estate Salespersons by the DRE.
©2020 Voit Real Estate Services, Inc. All Rights Reserved. License #01991785.

Voit
REAL ESTATE SERVICES

AVAILABLE FOR LEASE | ±2,500 - 4,523 SF

1950 E. 17TH STREET | SANTA ANA | CA

2ND FLOOR - SUITE 235 | ±4,523 SF



* PLAN NOT TO SCALE, TENANT TO VERIFY.

Chris Drzyzga, SIOR
Senior Vice President | Partner

949.263.5303

ChrisD@voitco.com

Lic. #01926212



2020 Main Street, Suite 100, Irvine, California 92614

949.851.5100 | 949.261.9092 Fax | Lic #01991785 | www.VoitCo.com

The information contained herein has been obtained from sources we deem reliable. While we have no reason to doubt its accuracy, we do not guarantee it. Licensed as Real Estate Salespersons by the DRE.
©2020 Voit Real Estate Services, Inc. All Rights Reserved. License #01991785.

Voit
REAL ESTATE SERVICES

AVAILABLE FOR LEASE | ±2,500 - 4,523 SF

1950 E. 17TH STREET | SANTA ANA | CA

AMENITIES



Chris Drzyzga, SIOR
Senior Vice President | Partner

949.263.5303

ChrisD@voitco.com

Lic. #01926212



2020 Main Street, Suite 100, Irvine, California 92614

949.851.5100 | 949.261.9092 Fax | Lic #01991785 | www.VoitCo.com

The information contained herein has been obtained from sources we deem reliable. While we have no reason to doubt its accuracy, we do not guarantee it. Licensed as Real Estate Salespersons by the DRE.
©2020 Voit Real Estate Services, Inc. All Rights Reserved. License #01991785.

Voit

REAL ESTATE SERVICES