

FOR LEASE

AVAILABLE OFFICE UNITS

8732 WESTMINSTER BLVD | WESTMINSTER, CA



PROPERTY FEATURES

- Opens to lush and serene courtyard
- Westminister Blvd. frontage
- Ideal executive office - GET OUT OF THE HOUSE
- Frontier Fios High Speed Internet
- Central Air
- Full Service lease, well priced
- Ideal for law, insurance, real estate, healthcare



Voit

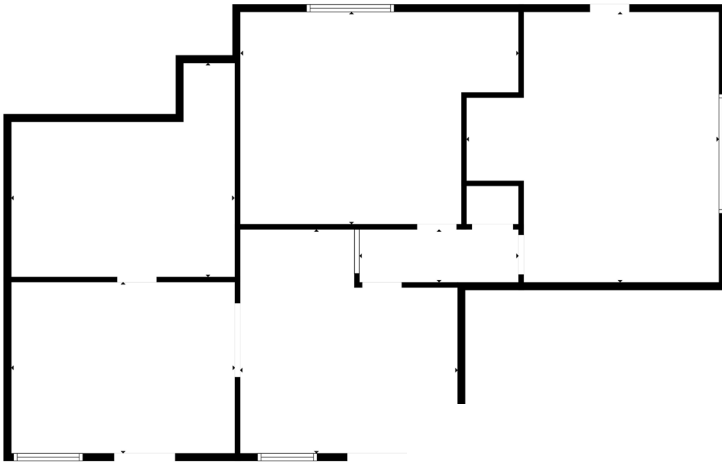
REAL ESTATE SERVICES
2400 E. Katella Avenue, Suite 750
Anaheim, CA 92806
License #01991785 www.voitco.com

Exclusively Offered By:

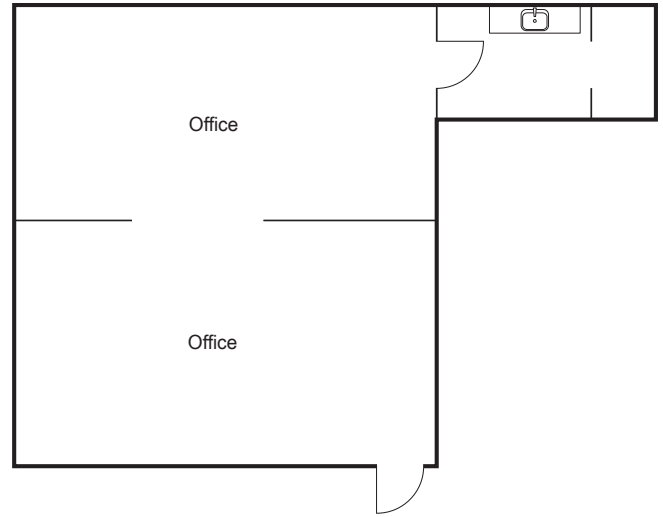


ERIC SMITH
Sr. Vice President | Partner
(714) 935-2310
ESmith@voitco.com
Lic. #01940591

UNIT #1



UNIT #3



8732 WESTMINSTER BLVD				
Suite	Size SF	Rate	Availability	Comments
1	± 1,238	\$2,500/month	Immediately	Natural Lighting, HVAC, Ideal for small office
3	±450	\$795/month	Immediately	HVAC, Ideal for small office, recently renovated



REAL ESTATE SERVICES
 2400 E. Katella Avenue, Suite 750
 Anaheim, CA 92806
 License #01991785 www.voitco.com

Exclusively Offered By:



ERIC SMITH
 Sr. Vice President | Partner
(714) 935-2310
 ESmith@voitco.com
 Lic. #01940591