

# FOR LEASE

# AVAILABLE OFFICE UNITS

8732 WESTMINSTER BLVD | WESTMINSTER, CA



## PROPERTY FEATURES

- Opens to lush and serene courtyard
- Westminister Blvd. frontage
- Ideal executive office - GET OUT OF THE HOUSE
- Frontier Fios High Speed Internet
- Central Air
- Full Service lease, well priced
- Ideal for law, insurance, real estate, healthcare



## Voit

REAL ESTATE SERVICES

2400 E. Katella Avenue, Suite 750  
Anaheim, CA 92806  
License #01991785 www.voitco.com

Exclusively Offered By:

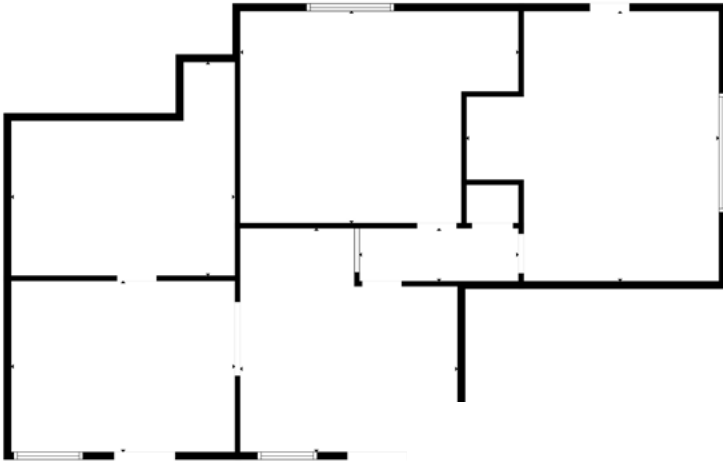


**ERIC SMITH**  
Sr. Vice President | Partner  
**(714) 935-2310**  
ESmith@voitco.com  
Lic. #01940591

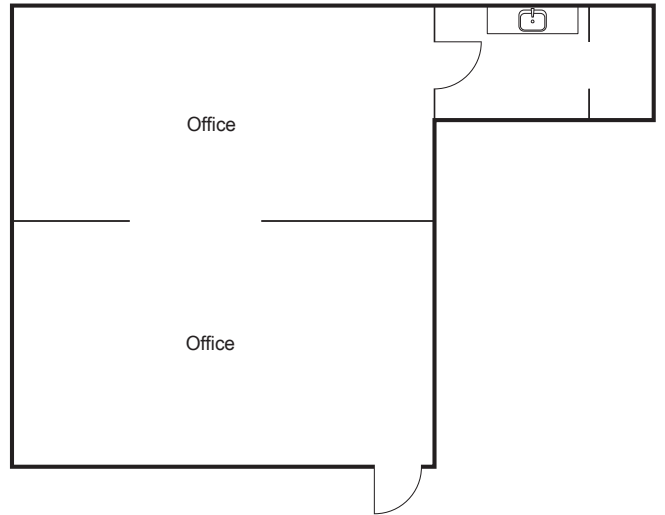


**NELSON SIMONS**  
Vice President  
**(714) 935-2315**  
NSimons@voitco.com  
Lic. #02049713

UNIT #1



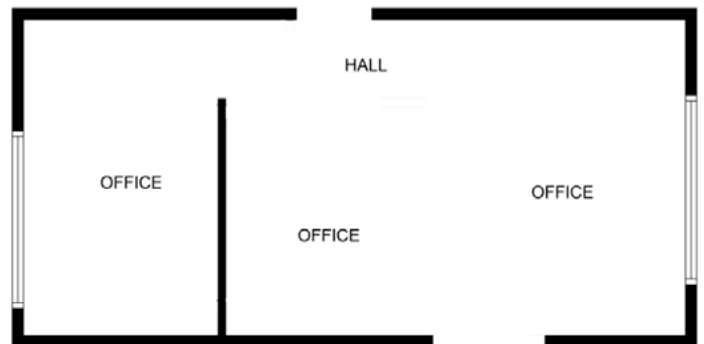
UNIT #3



UNIT #7



UNIT #8



8732 WESTMINSTER BLVD

Suite	Size SF	Rate	Availability	Comments
1	± 1,238	\$2,500/month	Immediately	Natural Lighting, HVAC, Ideal for small office
3	±450	\$795/month	Immediately	HVAC, Ideal for small office, recently renovated
7	±200	\$700/month	Immediately	Natural Lighting, HVAC, Ideal for small office
8	±425	\$750/month	Immediately	Ideal for small office, HVAC, Recently renovated



REAL ESTATE SERVICES  
 2400 E. Katella Avenue, Suite 750  
 Anaheim, CA 92806  
 License #01991785 www.voitco.com

Exclusively Offered By:



**ERIC SMITH**  
 Sr. Vice President | Partner  
**(714) 935-2310**  
 ESmith@voitco.com  
 Lic. #01940591



**NELSON SIMONS**  
 Vice President  
**(714) 935-2315**  
 NSimons@voitco.com  
 Lic. #02049713