

# FOR LEASE



Month-to-Month or  
Short-Term Lease ONLY

621-631  
S. EAST ST.  
ANAHEIM



Dead Storage OK

INDUSTRIAL UNITS FROM  $\pm 1,800$  SF TO  $\pm 3,600$  SF AVAILABLE  
FENCED YARD AREA | ANAHEIM STADIUM LOCATION



CBRE





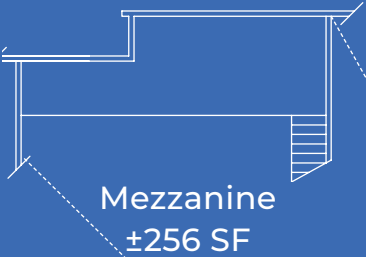
## Property Features

- ◇ Units from  $\pm 1,800$  SF to  $\pm 3,600$  SF Available
- ◇ Part of Rare  $\pm 16,948$  SF Industrial Building
- ◇ 14' Warehouse Clear Height
- ◇ 1 to 2 Grade-Level Doors Per Unit
- ◇ Month-to-Month or Short-Term Lease Only

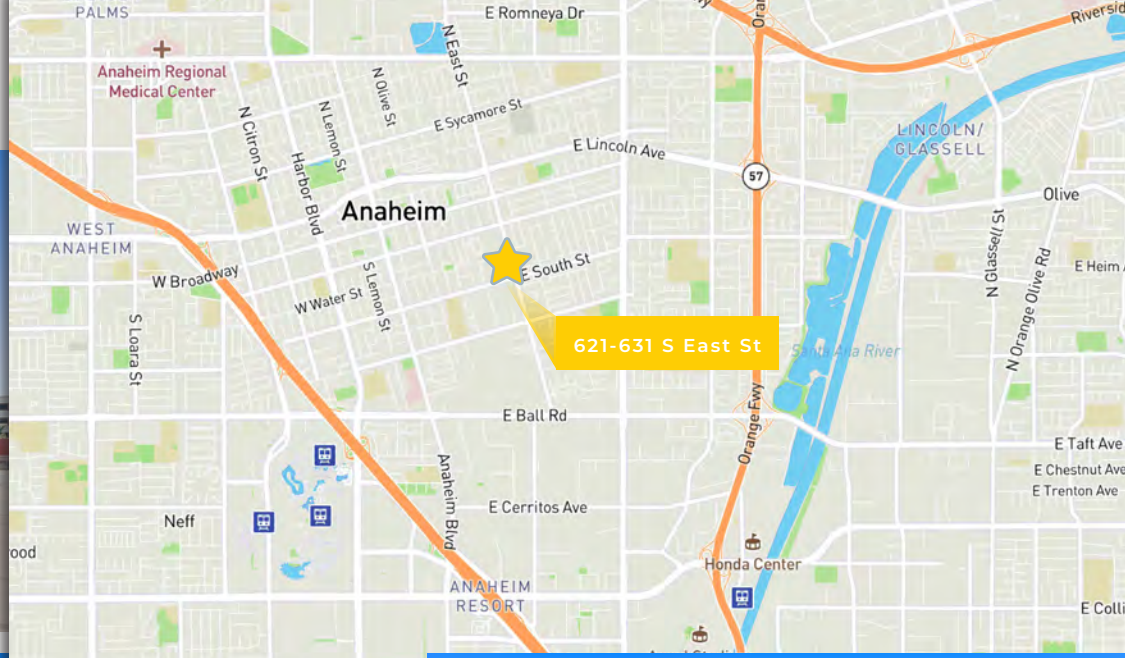
## Project Highlights

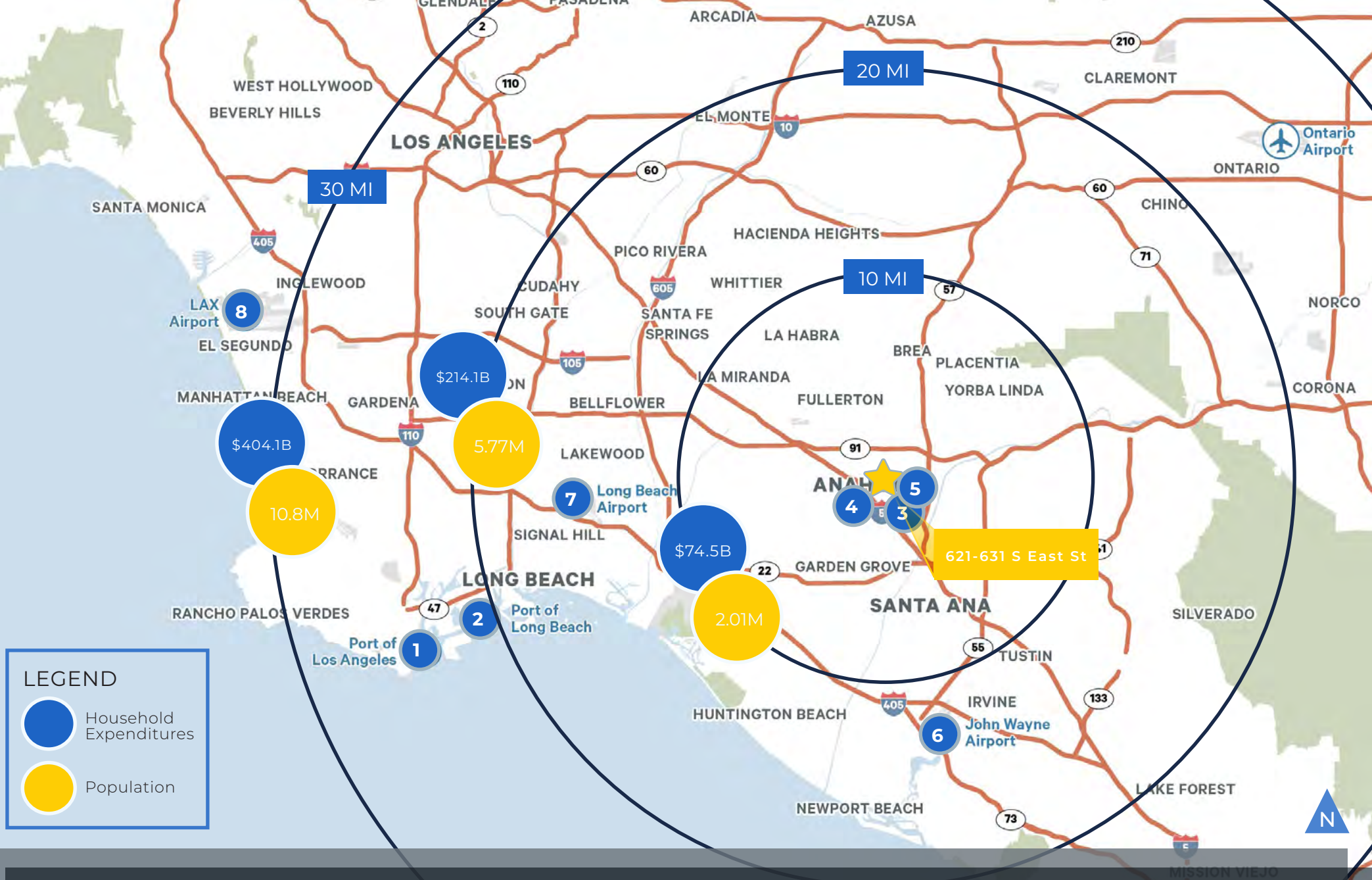
- ◇ Shared Fenced Yard Area
- ◇ Anaheim Stadium Location
- ◇ Drive-Around Building
- ◇ Close Proximity to Major Freeways, including the 91, I-5 and 57

# SITE PLAN









# MILEAGE TO

1 Port of Los Angeles	31.1 miles	4 Disneyland	2.2 miles	7 Long Beach Airport	14.9 miles
2 Port of Long Beach	26.4 miles	5 Honda Center	2.7 miles	8 Los Angeles Int'l Airport	35.3 miles
3 Anaheim Stadium	2.7 miles	6 John Wayne Airport	13.3 miles		



## CONTACT US

### Sean Ward

Lic. 01415499  
+1 714 371 9222  
sean.ward@cbre.com

### Josh Samuels

Lic. 02034678  
+1 714 371 9247  
joshua.samuels@cbre.com

### Tucker Black

Lic. 02215188  
+1 949 725 8514  
tucker.black@cbre.com

CBRE, Inc. | Broker Lic. 00409987

±1,800 SF TO ±3,600 SF FOR LEASE



© 2025 CBRE, Inc. All rights reserved. This information has been obtained from sources believed reliable, but has not been verified for accuracy or completeness. Any projections, opinions, or estimates are subject to uncertainty. The information may not represent the current or future performance of the property. You and your advisors should conduct a careful, independent investigation of the property and verify all information. Any reliance on this information is solely at your own risk. CBRE and the CBRE logo are service marks of CBRE, Inc. and/or its affiliated or related companies in the United States and other countries. All other marks displayed on this document are the property of their respective owners. Photos herein are the property of their respective owners and use of these images without the express written consent of the owner is prohibited.

