

LEASE W/ OPTION TO  
PURCHASE AVAILABLE

UNIT SIZES:  $\pm 1,775$  SF —  $3,675$  SF  
**FOR LEASE** 1304 LOGAN AVE, UNIT G & F  
COSTA MESA | CA

CONTACT EXCLUSIVE LISTING AGENTS:



**DEVIN RAY**  
VICE PRESIDENT  
M: 714.322.1252  
dray@daumcre.com  
CA DRE License #02018130



**MIKE BARREIRO**   
E.V.P. | PRINCIPAL  
P: 949.355.8500  
mbarreiro@daumcre.com  
CA DRE License #01712620



$\pm 1,775$  SF  
UNIT G SIZE



$\pm 1,900$  SF  
UNIT F SIZE



TWO (2)  
UNITS



14'  
CLEAR HEIGHT

 **DAUM**  
COMMERCIAL REAL ESTATE SERVICES

MULTI-TENANT BUSINESS PARK

D/AQ Corp. #01129558. Maps Courtesy ©Google & ©Microsoft. Although all information is furnished regarding for sale, rental or financing from sources deemed reliable, such information has not been verified and no express representation is made nor is any to be implied as to the accuracy thereof, and it is submitted subject to errors, omissions, changes of price, rental or other conditions, prior sale, lease or financing, or withdrawal without notice.

±1,775 SF –  
3,675 SF  
UNIT SIZES  
AVAILABLE

FOR LEASE  
1304 LOGAN AVE, UNIT G&F  
COSTA MESA | CA

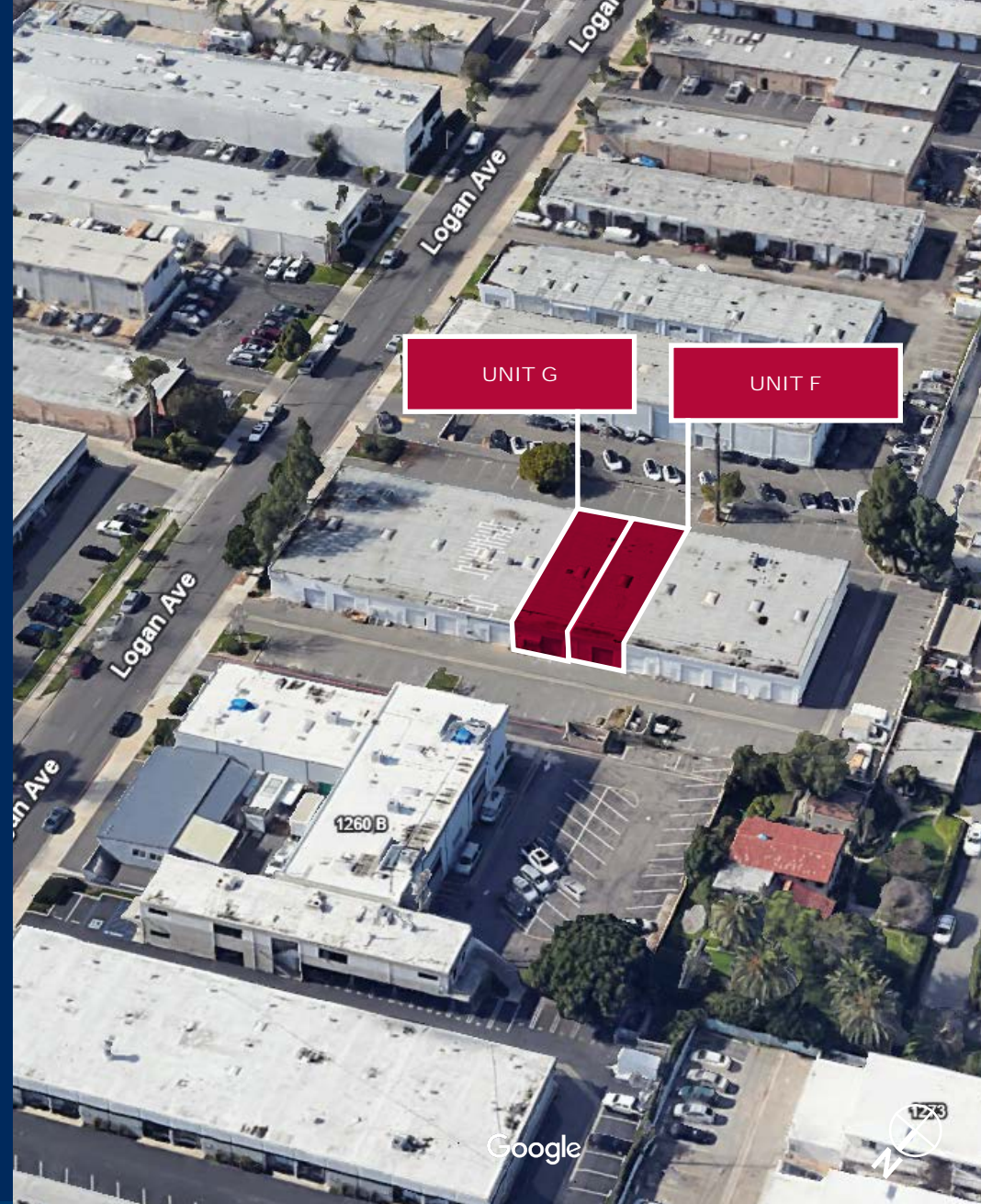
## PROPERTY HIGHLIGHTS

### 1304 N LOGAN AVE: UNIT G

Unit Size:	±1,775 SF Industrial Unit
Office Size:	±240 SF
Clear Height:	14'
Ground Level Door:	One (1) GL Door (10ft x 10ft)
Restroom:	One (1) Restroom
Skylights:	Yes
Power:	100 Amps (120/208 Volts) * Verify

### 1304 N LOGAN AVE: UNIT F

Unit Size:	±1,900 SF Industrial Unit
Office Size:	±264 SF
Bonus Mezzanine:	±550 SF
Clear Height:	14'
Ground Level Door:	One (1) GL Door (10ft x 10ft)
Restroom:	One (1) Restroom
Skylights:	Yes
Power:	100 Amps (120/208 Volts) * Verify



#### CONTACT EXCLUSIVE LISTING AGENTS:



**DEVIN RAY**  
VICE PRESIDENT  
M: 714.322.1252  
dray@daumcre.com  
CA DRE License #02018130



**MIKE BARREIRO**   
E.V.P. | PRINCIPAL  
P: 949.355.8500  
mbarreiro@daumcre.com  
CA DRE License #01712620



#### PROPERTY HIGHLIGHTS

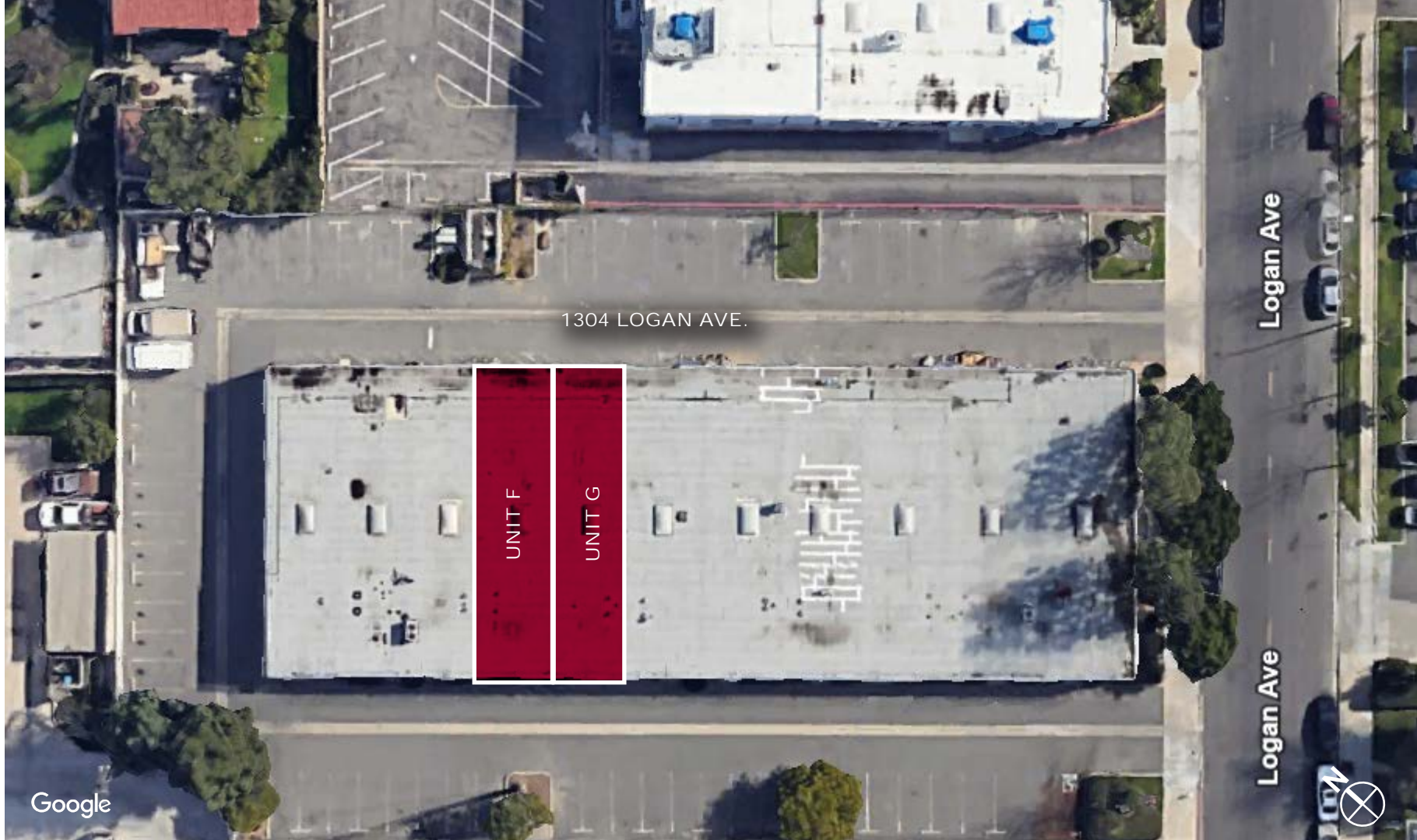
  
COMMERCIAL REAL ESTATE SERVICES

±1,775 SF –  
3,675 SF  
UNIT SIZES  
AVAILABLE

# FOR LEASE

1304 LOGAN AVE, UNIT G&F

COSTA MESA | CA



UNIT	SQUARE FEET	OFFICE SF	RATE	STATUS
1304 Logan Ave. - Unit G	±1,775 SF	±240 SF	\$2.00 / SF Gross	AVAILABLE
1304 Logan Ave. - Unit F	±1,900 SF	±264 SF	\$2.00 / SF Gross	AVAILABLE

## CONTACT EXCLUSIVE LISTING AGENTS:



**DEVIN RAY**  
VICE PRESIDENT  
M: 714.322.1252  
dray@daumcre.com  
CA DRE License #02018130



**MIKE BARREIRO**   
E.V.P. | PRINCIPAL  
P: 949.355.8500  
mbarreiro@daumcre.com  
CA DRE License #01712620



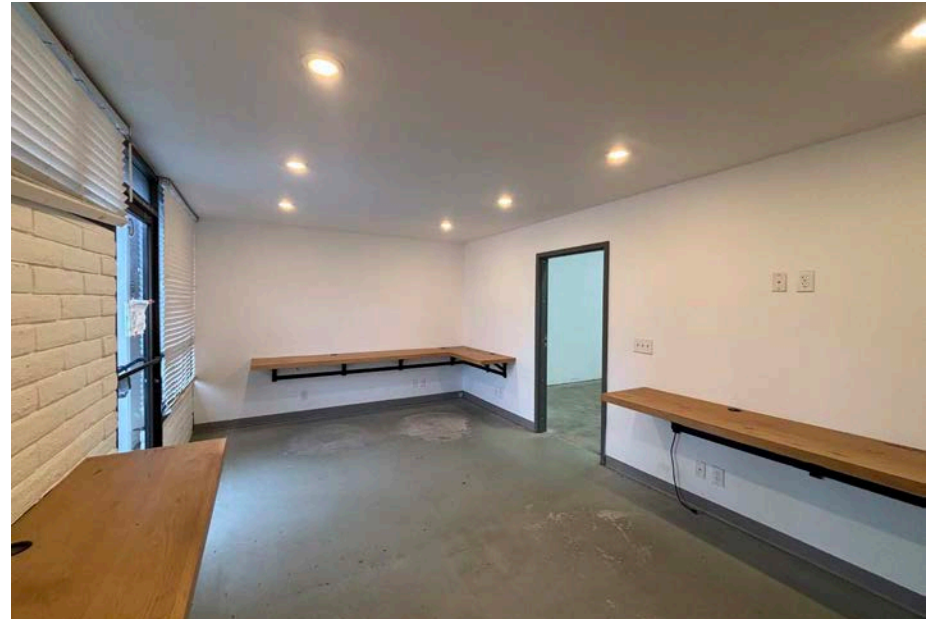
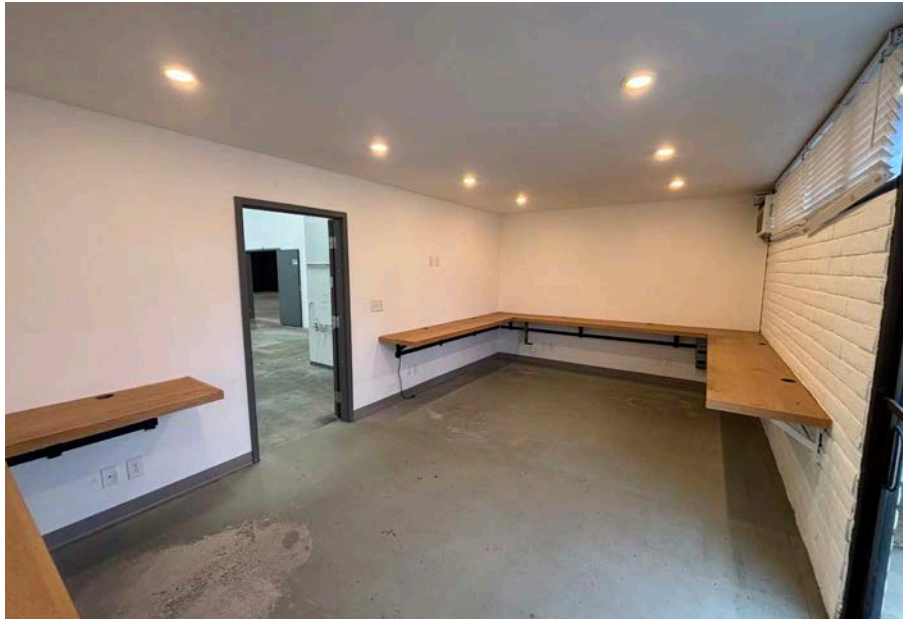
## AVAILABLE UNITS

  
COMMERCIAL REAL ESTATE SERVICES

D/AQ Corp. #01129558. Maps Courtesy @Google & @Microsoft. Although all information is furnished regarding for sale, rental or financing from sources deemed reliable, such information has not been verified and no express representation is made nor is any to be implied as to the accuracy thereof, and it is submitted subject to errors, omissions, changes of price, rental or other conditions, prior sale, lease or financing, or withdrawal without notice.

±1,775 SF –  
3,675 SF  
UNIT SIZES  
AVAILABLE

**FOR LEASE**  
1304 LOGAN AVE, UNIT G&F  
COSTA MESA | CA



CONTACT EXCLUSIVE LISTING AGENTS:



**DEVIN RAY**  
VICE PRESIDENT  
M: 714.322.1252  
dray@daumcre.com  
CA DRE License #02018130



**MIKE BARREIRO**   
E.V.P. | PRINCIPAL  
P: 949.355.8500  
mbarreiro@daumcre.com  
CA DRE License #01712620



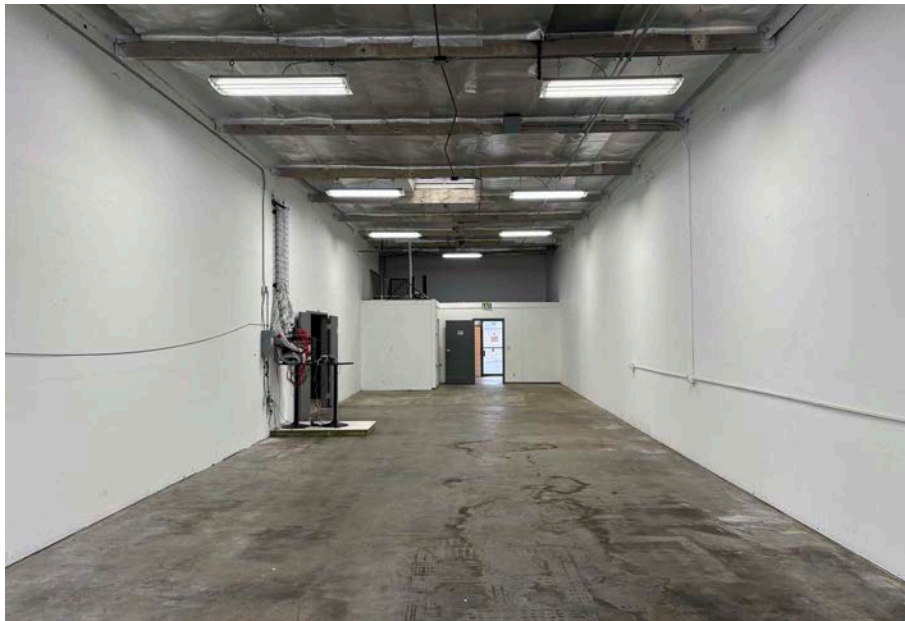
PHOTOS

**DAUM**  
COMMERCIAL REAL ESTATE SERVICES

D/AQ Corp. #01129558. Maps Courtesy @Google & @Microsoft. Although all information is furnished regarding for sale, rental or financing from sources deemed reliable, such information has not been verified and no express representation is made nor is any to be implied as to the accuracy thereof, and it is submitted subject to errors, omissions, changes of price, rental or other conditions, prior sale, lease or financing, or withdrawal without notice.

±1,775 SF –  
3,675 SF  
UNIT SIZES  
AVAILABLE

FOR LEASE  
1304 LOGAN AVE, UNIT G&F  
COSTA MESA | CA



CONTACT EXCLUSIVE LISTING AGENTS:



**DEVIN RAY**  
VICE PRESIDENT  
M: 714.322.1252  
dray@daumcre.com  
CA DRE License #02018130



**MIKE BARREIRO**   
E.V.P. | PRINCIPAL  
P: 949.355.8500  
mbarreiro@daumcre.com  
CA DRE License #01712620



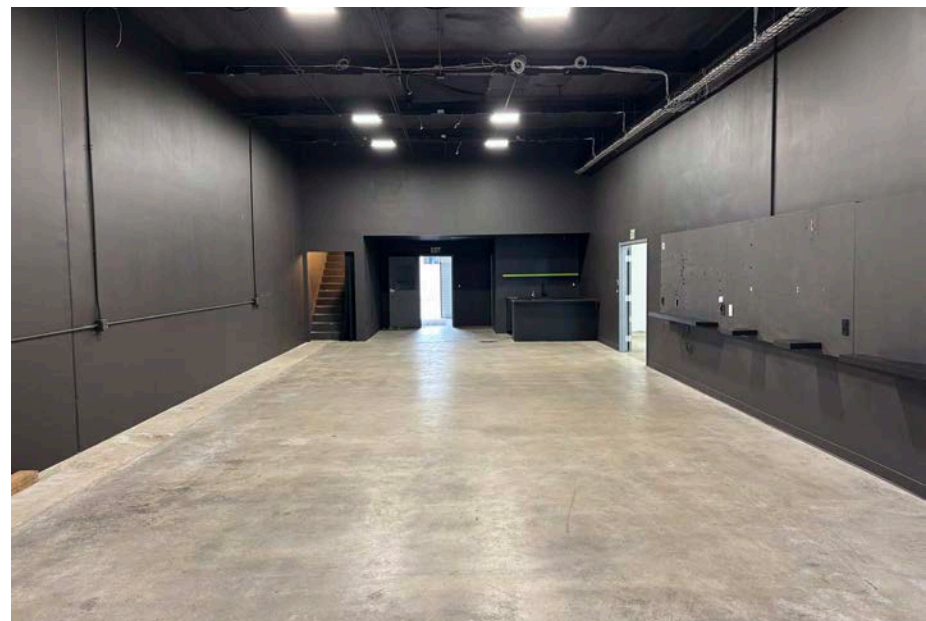
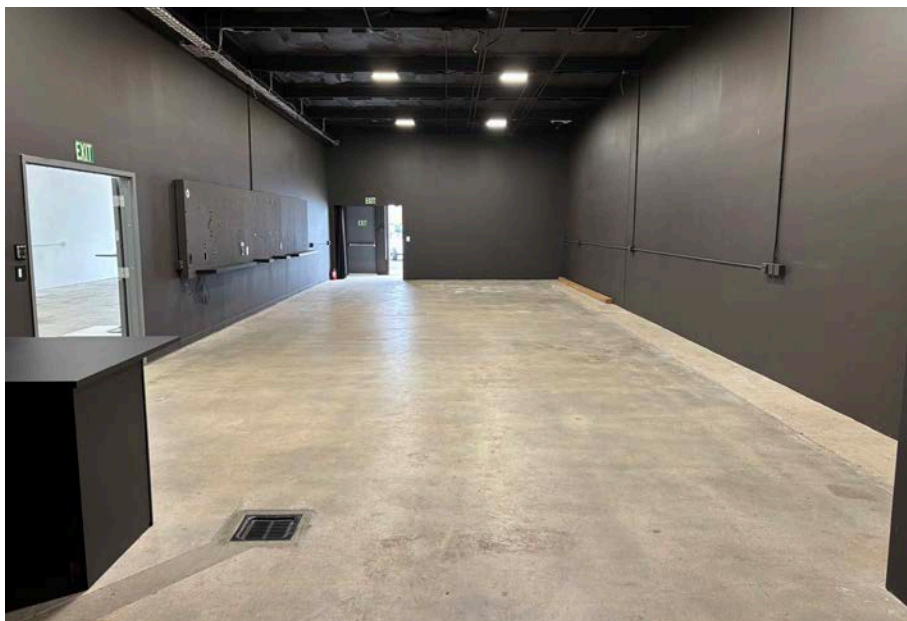
PHOTOS

  
COMMERCIAL REAL ESTATE SERVICES

D/AQ Corp. #01129558. Maps Courtesy @Google & @Microsoft. Although all information is furnished regarding for sale, rental or financing from sources deemed reliable, such information has not been verified and no express representation is made nor is any to be implied as to the accuracy thereof, and it is submitted subject to errors, omissions, changes of price, rental or other conditions, prior sale, lease or financing, or withdrawal without notice.

±1,775 SF –  
3,675 SF  
UNIT SIZES  
AVAILABLE

FOR LEASE  
1304 LOGAN AVE, UNIT G&F  
COSTA MESA | CA



CONTACT EXCLUSIVE LISTING AGENTS:



**DEVIN RAY**  
VICE PRESIDENT  
M: 714.322.1252  
dray@daumcre.com  
CA DRE License #02018130



**MIKE BARREIRO**   
E.V.P. | PRINCIPAL  
P: 949.355.8500  
mbarreiro@daumcre.com  
CA DRE License #01712620



PHOTOS

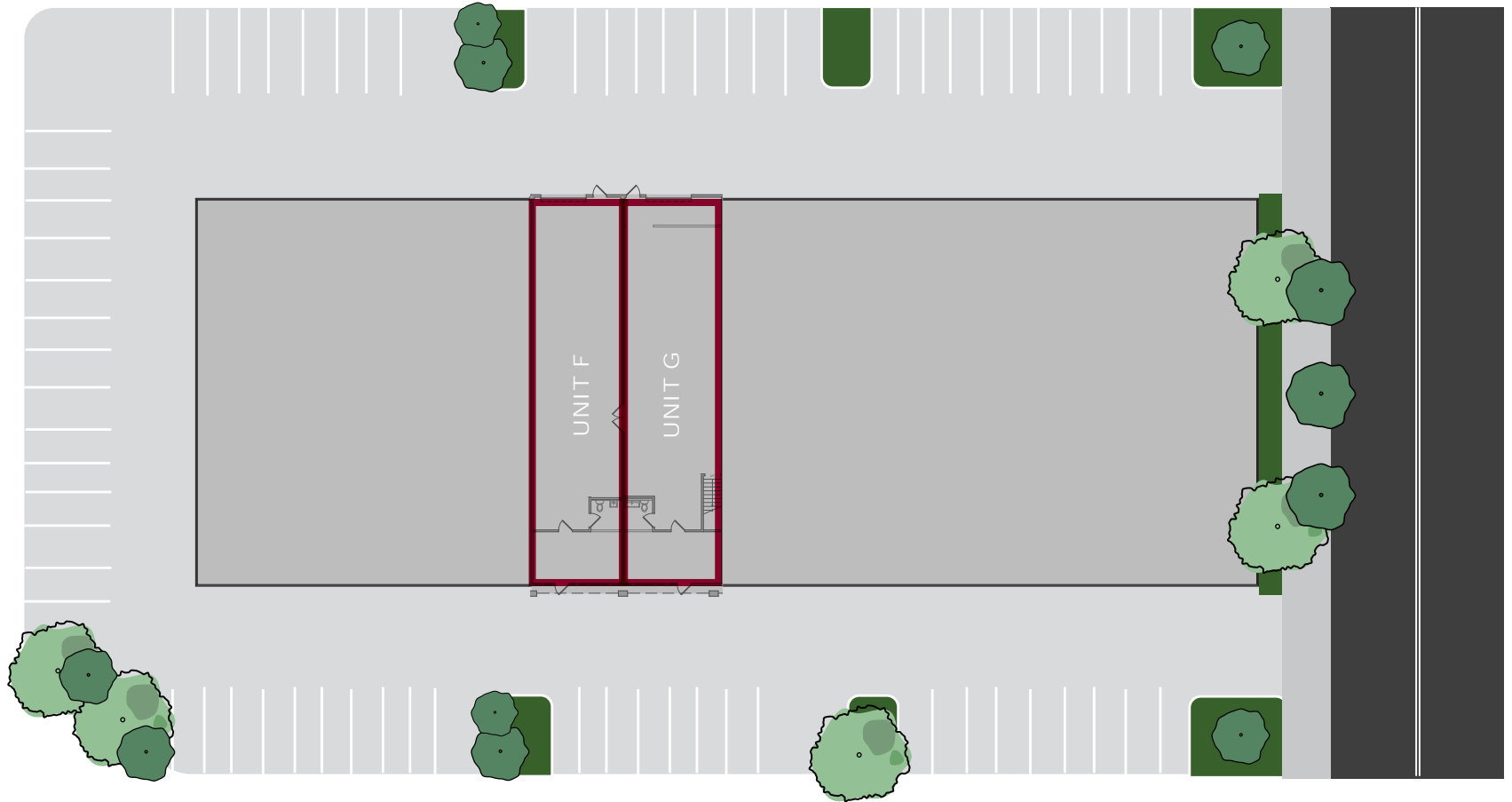
  
COMMERCIAL REAL ESTATE SERVICES

D/AQ Corp. #01129558. Maps Courtesy @Google & @Microsoft. Although all information is furnished regarding for sale, rental or financing from sources deemed reliable, such information has not been verified and no express representation is made nor is any to be implied as to the accuracy thereof, and it is submitted subject to errors, omissions, changes of price, rental or other conditions, prior sale, lease or financing, or withdrawal without notice.

±1,775 SF –  
3,675 SF  
UNIT SIZES  
AVAILABLE

# FOR LEASE

1304 LOGAN AVE, UNIT G&F  
COSTA MESA | CA



NOT TO SCALE\*

## CONTACT EXCLUSIVE LISTING AGENTS:



**DEVIN RAY**  
VICE PRESIDENT  
M: 714.322.1252  
dray@daumcre.com  
CA DRE License #02018130



**MIKE BARREIRO**   
E.V.P. | PRINCIPAL  
P: 949.355.8500  
mbarreiro@daumcre.com  
CA DRE License #01712620



## FLOOR + SITE PLAN

  
COMMERCIAL REAL ESTATE SERVICES

D/AQ Corp. #01129558. Maps Courtesy @Google & @Microsoft. Although all information is furnished regarding for sale, rental or financing from sources deemed reliable, such information has not been verified and no express representation is made nor is any to be implied as to the accuracy thereof, and it is submitted subject to errors, omissions, changes of price, rental or other conditions, prior sale, lease or financing, or withdrawal without notice.

±1,775 SF –  
3,675 SF  
UNIT SIZES  
AVAILABLE

# FOR LEASE

1304 LOGAN AVE, UNIT G&F  
COSTA MESA | CA



## CONTACT EXCLUSIVE LISTING AGENTS:



**DEVIN RAY**  
VICE PRESIDENT  
M: 714.322.1252  
dray@daumcre.com  
CA DRE License #02018130



**MIKE BARREIRO** **SIR**  
E.V.P. | PRINCIPAL  
P: 949.355.8500  
mbarreiro@daumcre.com  
CA DRE License #01712620



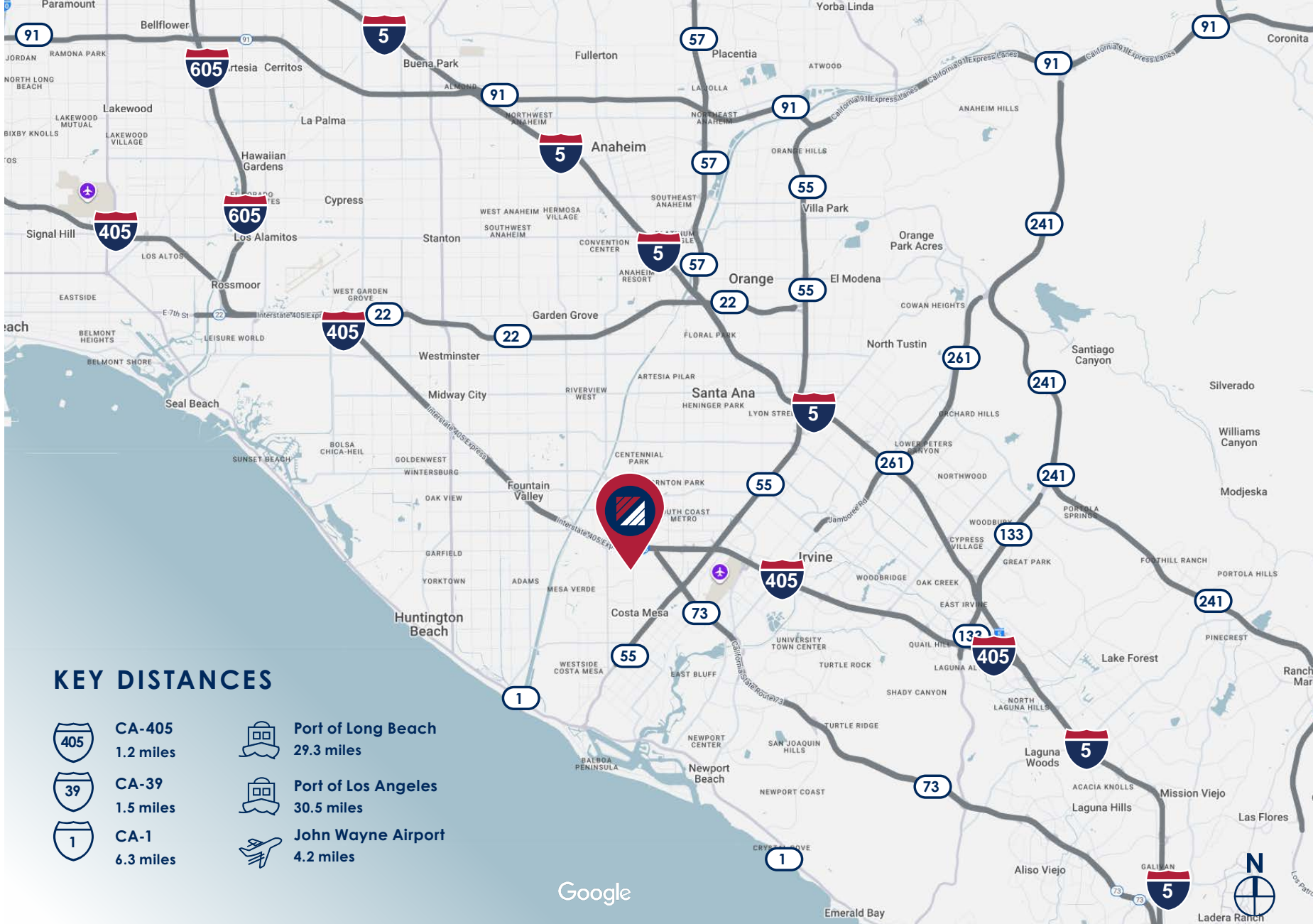
## AMENITIES MAP

**DAUM**  
COMMERCIAL REAL ESTATE SERVICES

D/AQ Corp. #01129558. Maps Courtesy @Google & @Microsoft. Although all information is furnished regarding for sale, rental or financing from sources deemed reliable, such information has not been verified and no express representation is made nor is any to be implied as to the accuracy thereof, and it is submitted subject to errors, omissions, changes of price, rental or other conditions, prior sale, lease or financing, or withdrawal without notice.

±1,775 SF –  
3,675 SF  
UNIT SIZES  
AVAILABLE

FOR LEASE  
1304 LOGAN AVE, UNIT G&F  
COSTA MESA | CA



## KEY DISTANCES

	CA-405 1.2 miles		Port of Long Beach 29.3 miles
	CA-39 1.5 miles		Port of Los Angeles 30.5 miles
	CA-1 6.3 miles		John Wayne Airport 4.2 miles

Google

### CONTACT EXCLUSIVE LISTING AGENTS:



**DEVIN RAY**  
VICE PRESIDENT  
M: 714.322.1252  
dray@daumcre.com  
CA DRE License #02018130



**MIKE BARREIRO**   
E.V.P. | PRINCIPAL  
P: 949.355.8500  
mbarreiro@daumcre.com  
CA DRE License #01712620



### LOCATION MAP

**DAUM**  
COMMERCIAL REAL ESTATE SERVICES

D/AQ Corp. #01129558. Maps Courtesy ©Google & ©Microsoft. Although all information is furnished regarding for sale, rental or financing from sources deemed reliable, such information has not been verified and no express representation is made nor is any to be implied as to the accuracy thereof, and it is submitted subject to errors, omissions, changes of price, rental or other conditions, prior sale, lease or financing, or withdrawal without notice.