

# AVAILABILITY



REAL ESTATE SERVICES

## Garden Grove Business Center

7201-7291 Garden Grove Blvd.  
Garden Grove, CA 92841

### OFFICE UNITS

Address	Suite	Total Size <sup>1</sup>	Office Size <sup>1</sup>	Asking Rate PSF	Monthly Rate	Comments
7245 Garden Grove Blvd.	G	910	910	\$1.35 Mod. Gross	\$1,229.00	Reception/private office, restroom and large open office area.
7245 Garden Grove Blvd.	KL	2,000	2,000	\$1.35 Mod. Gross	\$2,700.00	Reception, 3 private offices, large open office area and 2 restrooms.

### WAREHOUSE UNITS

Address	Suite	Total Size <sup>1</sup>	Office Size <sup>1</sup>	Asking Rate PSF	Monthly Rate	Comments
7245 Garden Grove Blvd.	A	1,000	±650	\$1.35 Mod. Gross	\$1,350.00	Reception, 2 private offices, restroom and warehouse/creative space. No ground level loading door.
7281 Garden Grove Blvd.	EF	4,000	±650	\$1.35 Mod Gross	\$5,400.00	Reception, private office, large open office area, 2 restrooms and large warehouse with 2 ground level loading doors.

<sup>1</sup>Approximate total and office square footage

[Property Touring Guidelines](#) >

### Hayden Socci, CCIM

Senior Vice President

Lic #01705038

714.935.2379

hsocci@voitco.com



2400 E. Katella Avenue, Ste. 750, Anaheim, CA 92806 • 714.978.7880 • 714.276.0664 Fax • Lic #01991785 | [www.voitco.com](http://www.voitco.com)

Licensed as a Real Estate Salesperson by the CA Bur of Real Estate. The information contained herein has been obtained from sources we deem reliable. While we have no reason to doubt its accuracy, we do not guarantee it. ©2020 Voit Real Estate Services, Inc. All Rights Reserved. License #01991785.

# Garden Grove Business Center

7201-7291 Garden Grove Blvd., Garden Grove, CA 92841

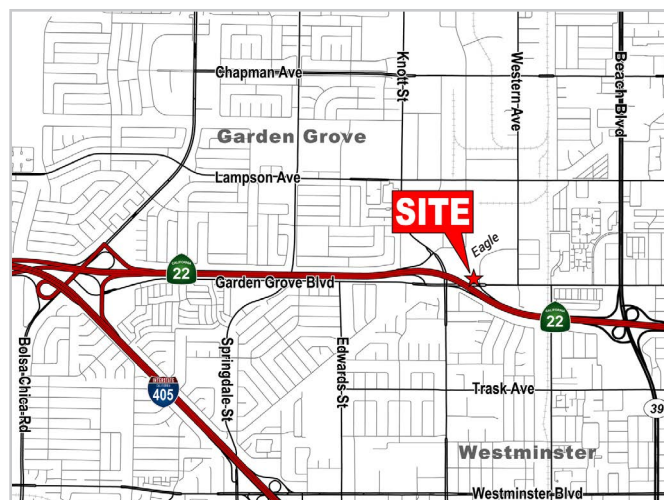
# Voit

REAL ESTATE SERVICES



## PROPERTY HIGHLIGHTS

- Units Range From 1,000 to 6,000 Square Feet
- High Image Business Park
- Twelve (12) Multi-Tenant Industrial/Office/Retail Buildings Totaling 208,200 Square Feet
- Ample Parking 2.4:1 Parking Ratio
- Major Garden Grove Blvd. Frontage
- Ground Level Loading
- Centrally Located
- Close Proximity To The Garden Grove (22), San Diego (405) and Long Beach (710) Freeways



For more information, please contact:

**Hayden Socci, CCIM**

Senior Vice President

Lic #01705038

714.935.2379

hsocci@voitco.com



2400 E. Katella Avenue, Ste. 750, Anaheim, CA 92806 • 714.978.7880 • 714.276.0664 Fax • Lic #01991785 | [www.voitco.com](http://www.voitco.com)

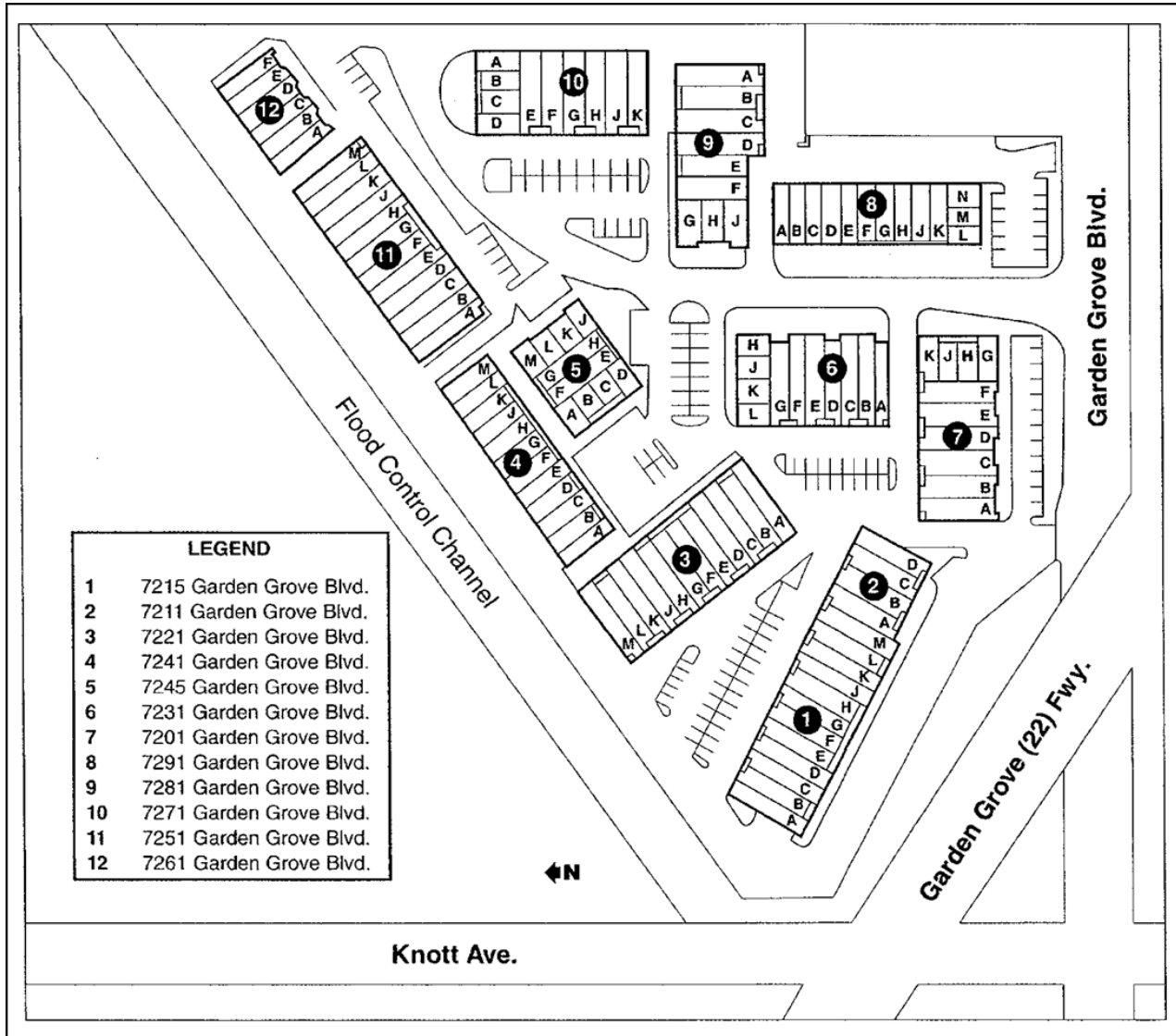
Licensed as a Real Estate Salesperson by the CA Bur of Real Estate. The information contained herein has been obtained from sources we deem reliable. While we have no reason to doubt its accuracy, we do not guarantee it. ©2019 Voit Real Estate Services, Inc. All Rights Reserved. License #01991785.

# Garden Grove Business Center

7201-7291 Garden Grove Blvd., Garden Grove, CA 92841

# Voit

REAL ESTATE SERVICES



For more information, please contact:

**Hayden Socci, CCIM**

Senior Vice President

Lic #01705038

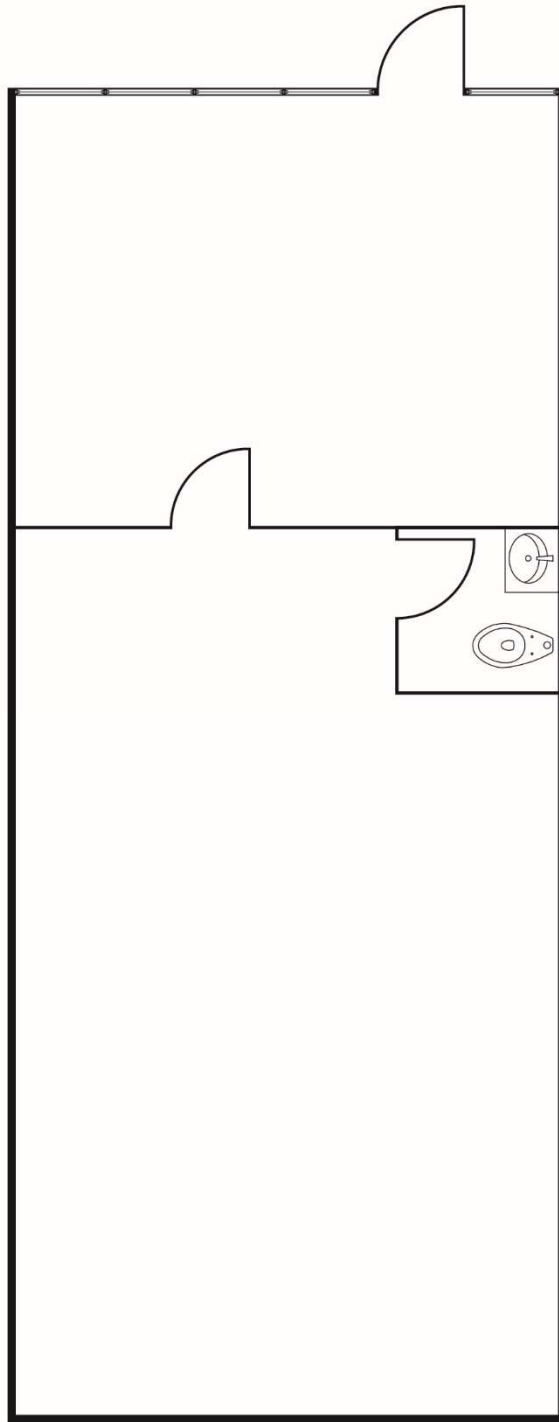
714.935.2379

hsocci@voitco.com

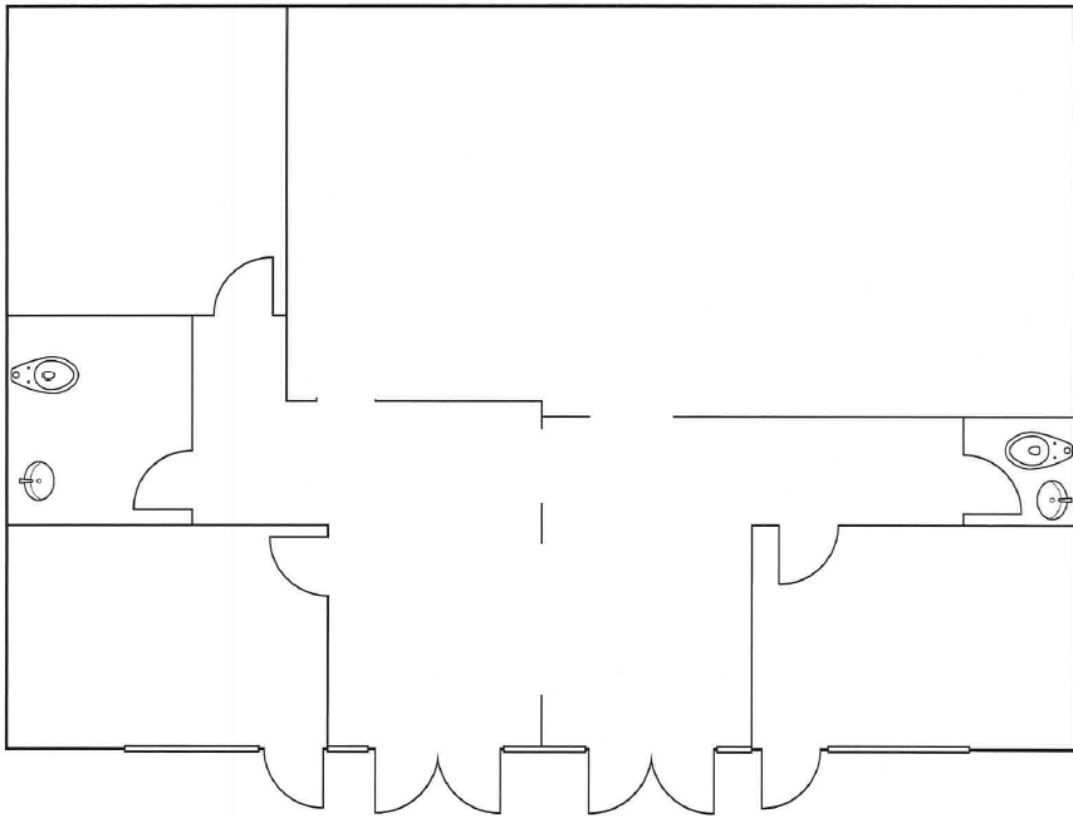


2400 E. Katella Avenue, Ste. 750, Anaheim, CA 92806 • 714.978.7880 • 714.276.0664 Fax • Lic #01991785 | www.voitco.com

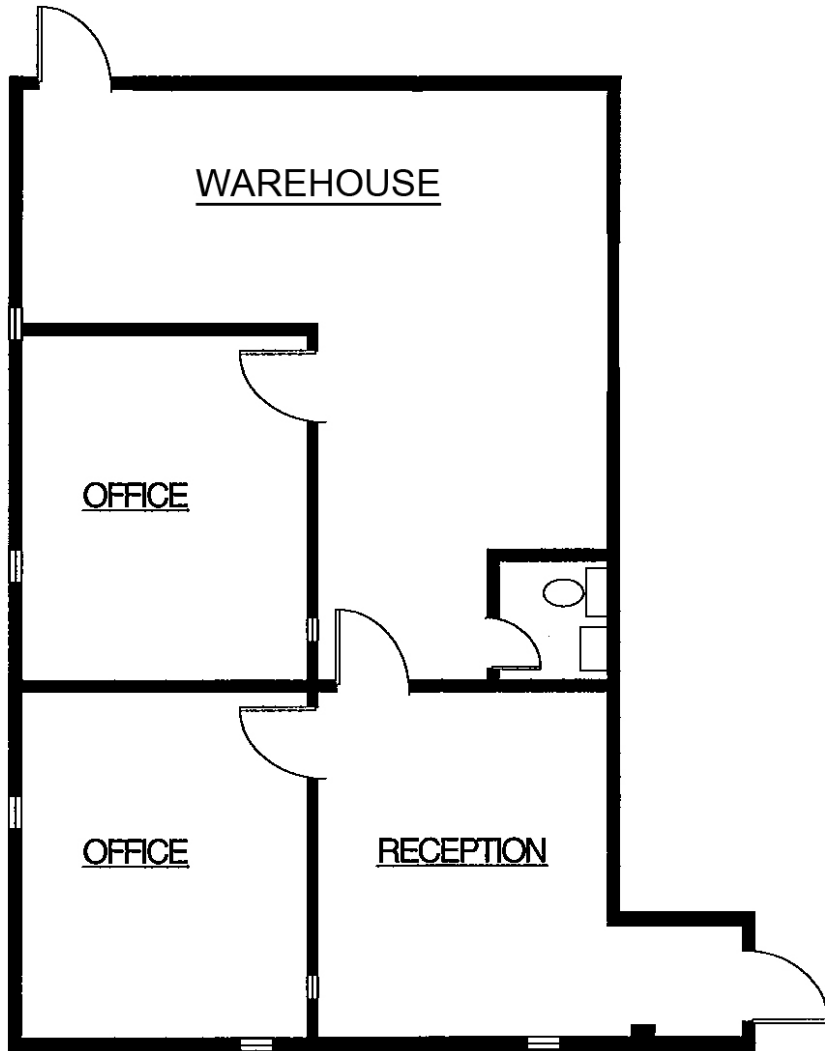
Licensed as a Real Estate Salesperson by the CA Bur of Real Estate. The information contained herein has been obtained from sources we deem reliable. While we have no reason to doubt its accuracy, we do not guarantee it. ©2019 Voit Real Estate Services, Inc. All Rights Reserved. License #01991785.



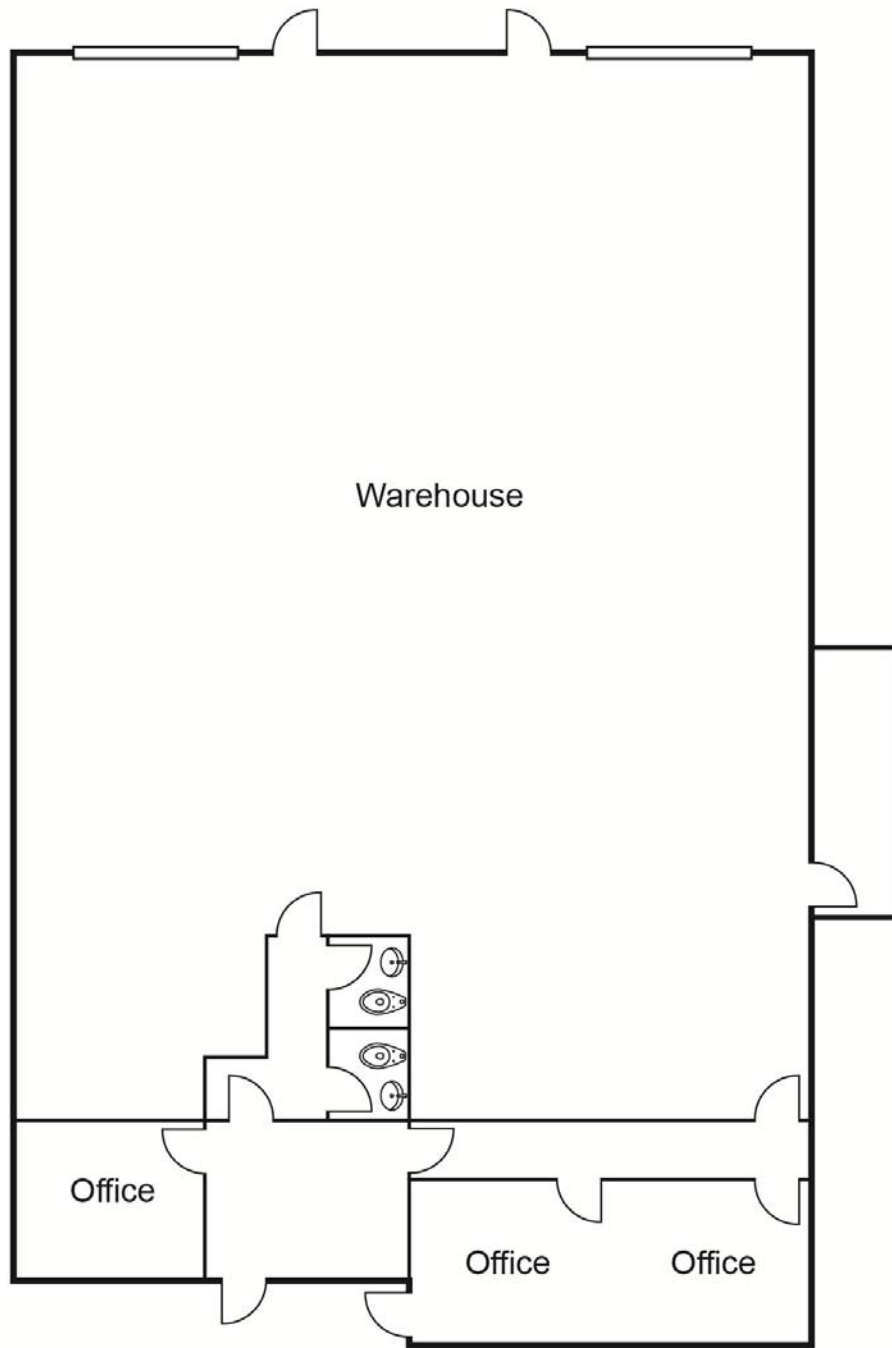
Garden Grove Business Center  
7245 Garden Grove Blvd., Suite G  
910 Square Feet



Garden Grove Business Center  
7245 Garden Grove Blvd., Suite KL  
2,000 Square Feet



Garden Grove Business Center  
7245 Garden Grove Blvd., Suite A  
1,000 Square Feet



Garden Grove Business Center  
7281 Garden Grove Blvd., Suites E & F  
4,000 Square Feet