

VOIT LA PALMA CORPORATE PARK

FOR LEASE

2970-2990 La Palma Avenue, Anaheim
1035-1045 N. Armando Street, Anaheim

AVAILABILITY - OFFICE

| Address | Unit | Total SF | Office SF | Lease Rate (Modified Gross) | Comments |
|---------------|------|----------|-----------|-----------------------------|---|
| 2970 La Palma | Q | ± 1,076 | ± 1,076 | \$1.30 MG | Reception, 2 private offices, open area, 1 restroom |

AVAILABILITY - INDUSTRIAL

| Address | Unit | Total SF | Office SF | Lease Rate (Modified Gross) | Comments |
|---------------|-------|----------|-----------|-----------------------------|--|
| 2970 La Palma | H | ± 1,626 | ± 300 | \$1.30 MG | Reception, 1 private office, restroom, 1 GL door, available 1/1/21 |
| 1035 Armando | E / F | ± 1,994 | ± 200 | \$1.25 MG | 1 private offices, restroom, 2 GL doors, recently rehabbed |

In addition to base rent, Tenant shall be responsible for a CAM charge which is currently \$0.08 PSF per month

**As of 3-10-21*

MIKE BOOMER
Vice President
714.935.2344
Lic. #01209091
mboomer@voitco.com

Voit
REAL ESTATE SERVICES

2400 E. Katella Avenue, Suite 750, Anaheim, CA 92806
714.978.7800 • 714.978.9431 Fax www.VoitCo.com

Licensed as Real Estate Salespersons by the DRE. The information contained herein has been obtained from sources we deem reliable. While we have no reason to doubt its accuracy, we do not guarantee it. ©2020 Voit Real Estate Services, Inc. All Rights Reserved. License #01991785

VOIT LA PALMA CORPORATE PARK

FOR LEASE

2970-2990 La Palma Avenue, Anaheim
1035-1045 N. Armando Street, Anaheim



BUSINESS PARK FEATURES

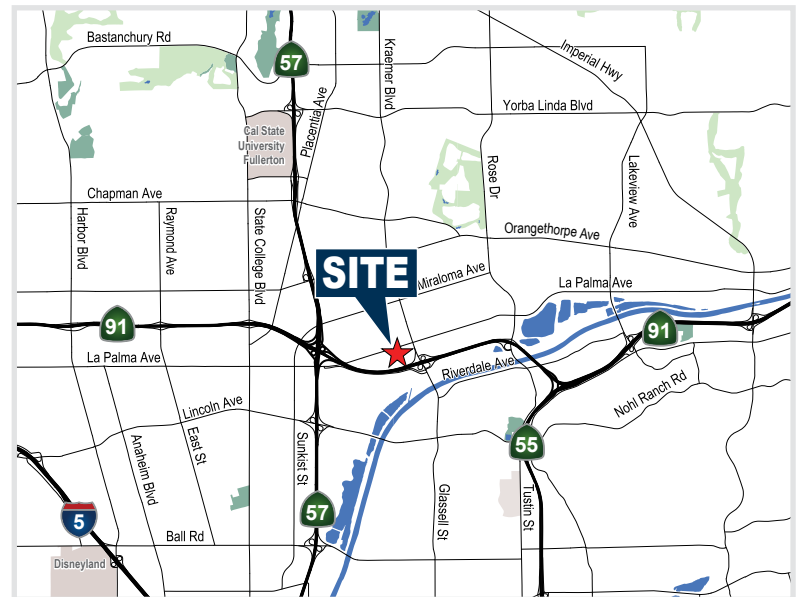
- High Image Master Planned Business Park
- Major Street Frontage - La Palma Avenue
- Centrally located in East Anaheim Corridor
- Excellent Freeway Access to 91, 57, & 55 Freeway
- Abundant Parking at 2.75:1 ratio
- On-Site Management Office

INDUSTRIAL UNIT FEATURES

- Units ranging from ±997-7,000 SF
- Warehouse ceiling clearance up to 14'
- 100-200 Amps, 110/20/3 Phase Power (verify)
- 10'x10' Truck Doors

OFFICE UNIT FEATURES

- High Image Interior Office Improvements
- Various Office Layouts
- Low Gross Office Lease Rates
- Suites ranging from ±961-3,989 SF



MIKE BOOMER

Vice President

714.935.2344

Lic. #01209091

mboomer@voitco.com

Voit

REAL ESTATE SERVICES

2400 E. Katella Avenue, Suite 750, Anaheim, CA 92806

714.978.7800 • 714.978.9431 Fax www.VoitCo.com

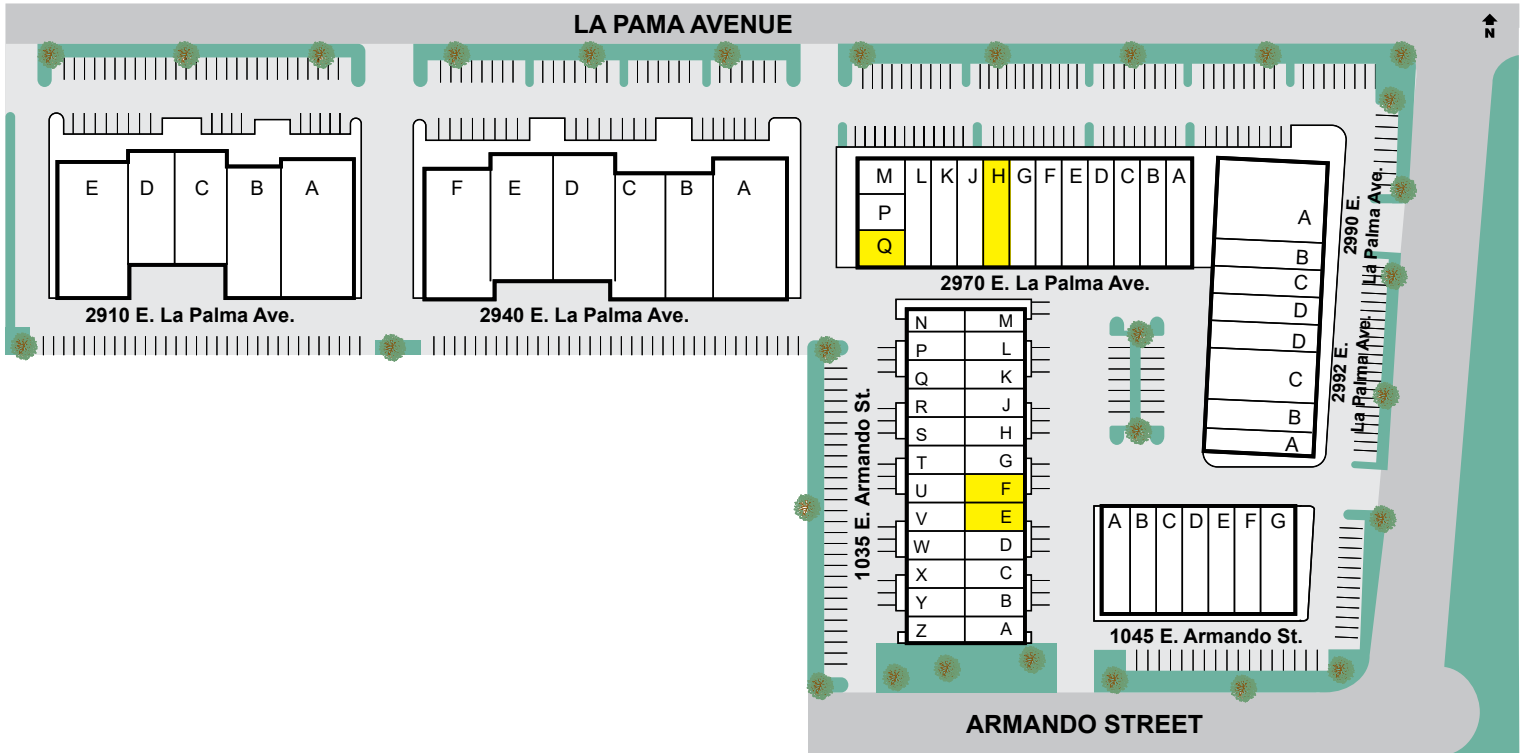
Licensed as Real Estate Salespersons by the DRE. The information contained herein has been obtained from sources we deem reliable. While we have no reason to doubt its accuracy, we do not guarantee it. ©2020 Voit Real Estate Services, Inc. All Rights Reserved. License #01991785

VOIT LA PALMA CORPORATE PARK

FOR LEASE

2970-2990 La Palma Avenue, Anaheim
1035-1045 N. Armando Street, Anaheim

SITE PLAN



MIKE BOOMER

Vice President

714.935.2344

Lic. #01209091

mboomer@voitco.com

Voit

REAL ESTATE SERVICES

2400 E. Katella Avenue, Suite 750, Anaheim, CA 92806

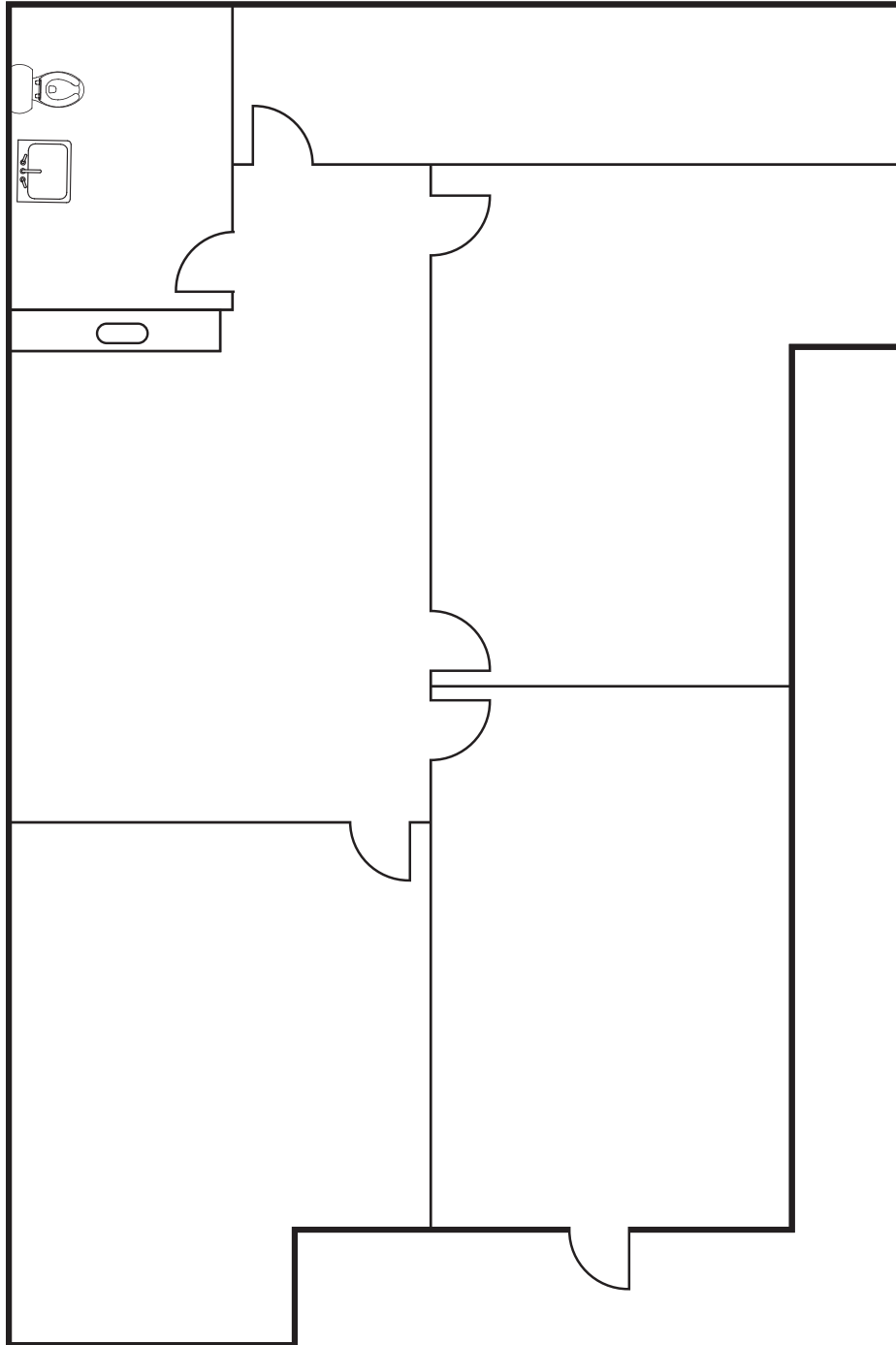
714.978.7800 • 714.978.9431 Fax www.VoitCo.com

Licensed as Real Estate Salespersons by the DRE. The information contained herein has been obtained from sources we deem reliable. While we have no reason to doubt its accuracy, we do not guarantee it. ©2020 Voit Real Estate Services, Inc. All Rights Reserved. License #01991785

VOIT LA PALMA CORPORATE PARK

2970 E. La Palma Ave., Anaheim

Unit Q - ± 1,076 SF



MIKE BOOMER

Vice President

714.935.2344

Lic. #01209091

mboomer@voitco.com

Voit

REAL ESTATE SERVICES

2400 E. Katella Avenue, Suite 750, Anaheim, CA 92806

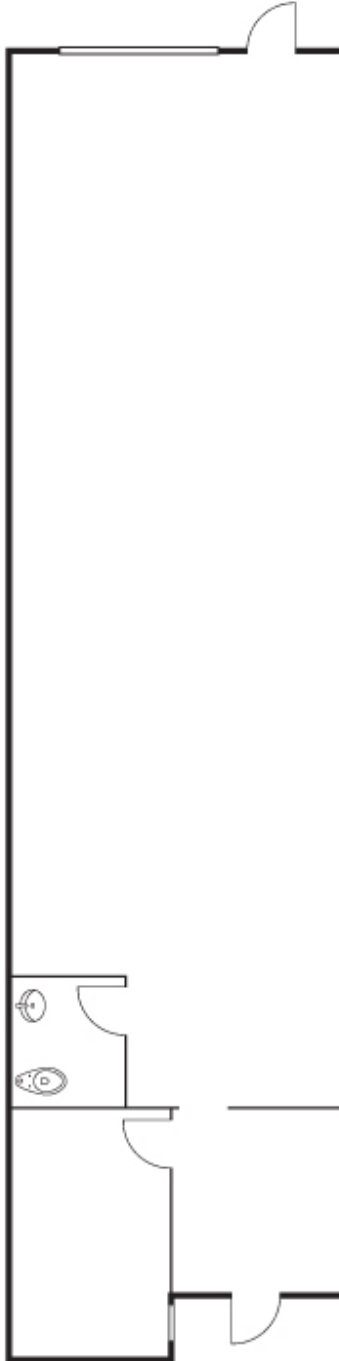
714.978.7800 • 714.978.9431 Fax www.VoitCo.com

Licensed as Real Estate Salespersons by the DRE. The information contained herein has been obtained from sources we deem reliable. While we have no reason to doubt its accuracy, we do not guarantee it. ©2020 Voit Real Estate Services, Inc. All Rights Reserved. License #01991785

VOIT LA PALMA CORPORATE PARK

2970 La Palma Ave., Anaheim

Unit H - ± 1,626 SF



MIKE BOOMER

Vice President

714.935.2344

Lic. #01209091

mboomer@voitco.com

Voit

REAL ESTATE SERVICES

2400 E. Katella Avenue, Suite 750, Anaheim, CA 92806

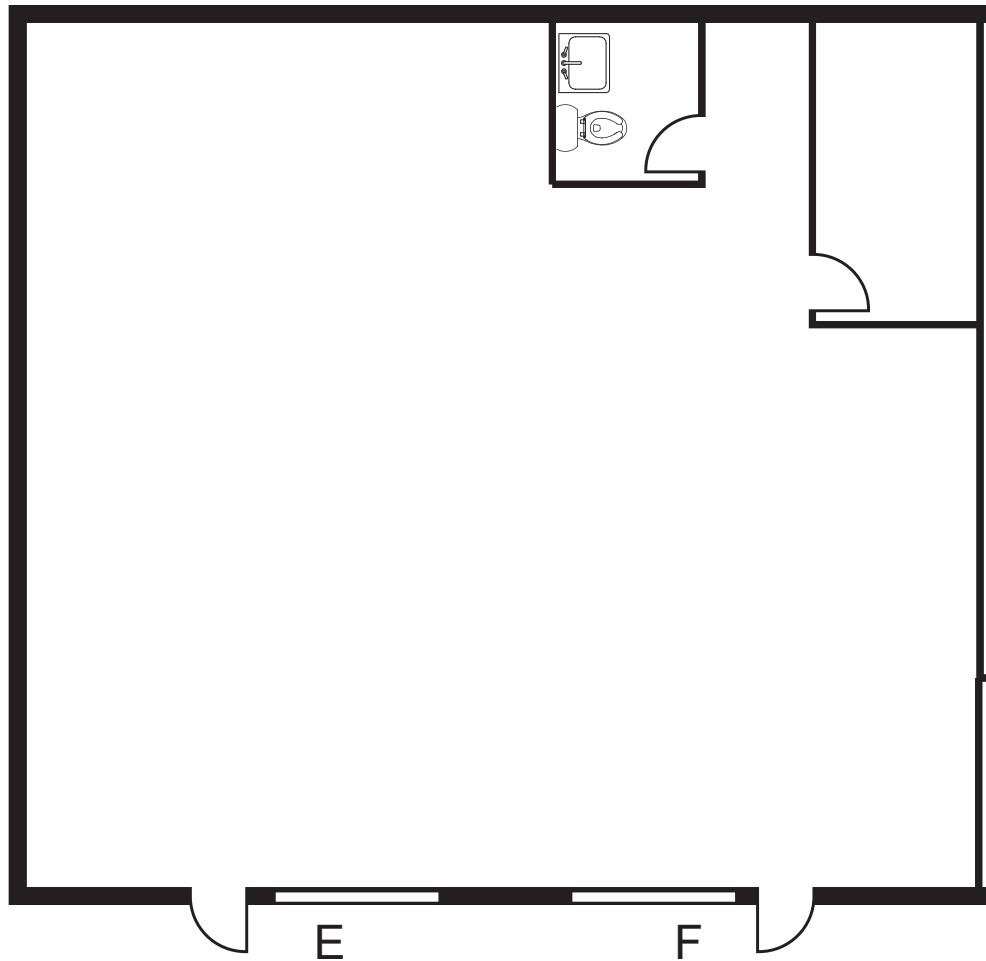
714.978.7800 • 714.978.9431 Fax www.VoitCo.com

Licensed as Real Estate Salespersons by the DRE. The information contained herein has been obtained from sources we deem reliable. While we have no reason to doubt its accuracy, we do not guarantee it. ©2020 Voit Real Estate Services, Inc. All Rights Reserved. License #01991785

VOIT LA PALMA CORPORATE PARK

1035 N. Armando St., Anaheim

Unit E/F - ± 1,994 SF



MIKE BOOMER

Vice President

714.935.2344

Lic. #01209091

mboomer@voitco.com

Voit

REAL ESTATE SERVICES

2400 E. Katella Avenue, Suite 750, Anaheim, CA 92806

714.978.7800 • 714.978.9431 Fax www.VoitCo.com

Licensed as Real Estate Salespersons by the DRE. The information contained herein has been obtained from sources we deem reliable. While we have no reason to doubt its accuracy, we do not guarantee it. ©2020 Voit Real Estate Services, Inc. All Rights Reserved. License #01991785