

**SIERRA VISTA BUSINESS PARK**

100-140 Chaparral Court, Anaheim, CA

## Availability

Building	Suite(s)	Rentable SF	Lease Rate	Comments
130 Chaparral Court	235-246	3,816	\$2.20 FSG	5 Private offices, large open area, available now
140 Chaparral Court	250-260	3,695	\$2.20 FSG	Available now
140 Chaparral Court	230	2,068	\$1.95 MG	2 Private offices, large open area & restroom
140 Chaparral Court	240	2,064	\$1.95 MG	2 Private offices, large open area, restroom, available now
130 Chaparral Court	235	1,304	\$2.20 FSG	3 Private offices, storage, open area, available now
140 Chaparral Court	220	1,292	\$2.20 FSG	Large open area, 2 private offices, available now
130 Chaparral Court	160	1,096	\$1.95 MG	Large open area, 3 private offices, available now

as of 4/9/24

**MIKE BOOMER**  
 Vice President  
 714.935.2344  
 Lic. #01209091  
 mboomer@voitco.com

**Voit**  
 REAL ESTATE SERVICES

# FOR LEASE

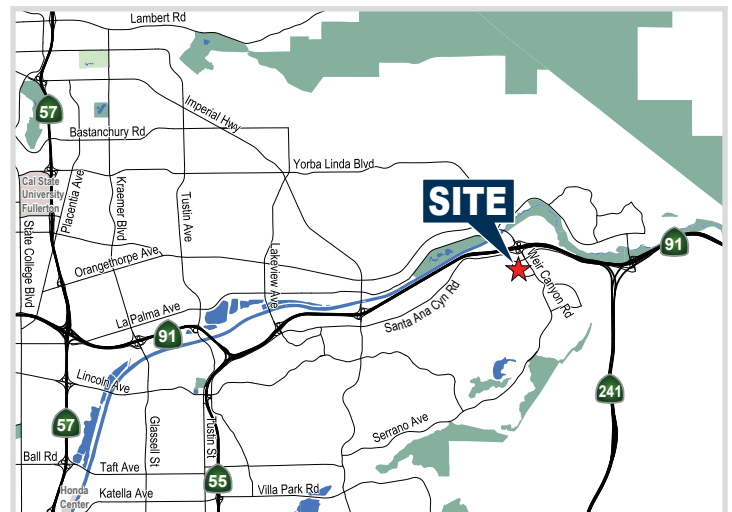
## SIERRA VISTA BUSINESS PARK

100-140 Chaparral Court, Anaheim, CA



### PROPERTY FEATURES

- High Tech Concrete Aggregate Architecture
- Ground Floor and 2nd Story Space Available
- Parking Ratio  $\pm$ 4:1
- Fully Fire Sprinklered
- Adjacent to 562,450 Square Foot Anaheim Hills Festival Center Regional Mall / 8 Plex Theatre
- Excellent Freeway Access to the Riverside (91) and Eastern Transportation Corridor (SR241)



### MIKE BOOMER

Vice President

714.935.2344

Lic. #01209091

mboomer@voitco.com

# Voit

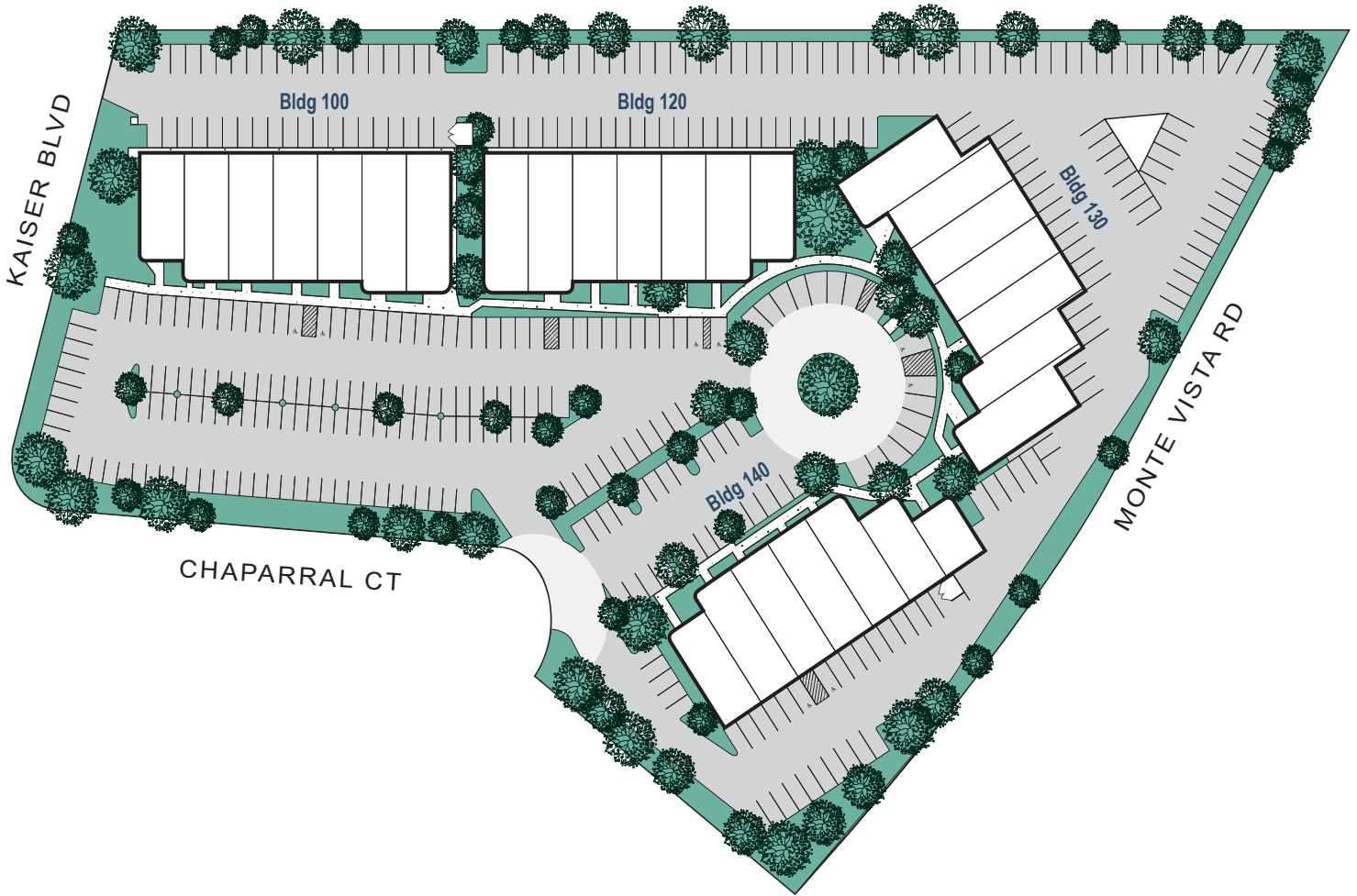
REAL ESTATE SERVICES

**FOR LEASE**

**SIERRA VISTA BUSINESS PARK**

100-140 Chaparral Court, Anaheim, CA

**SITE PLAN**



**MIKE BOOMER**  
Vice President  
714.935.2344  
Lic. #01209091  
mboomer@voitco.com

**Voit**  
REAL ESTATE SERVICES

2400 E. Katella Avenue, Suite 750, Anaheim, CA 92806 • 714.978.7880 • 714.978.9431 Fax

[www.VoitCo.com](http://www.VoitCo.com)

Licensed as a Real Estate Salesperson by the DRE. The information contained herein has been obtained from sources we deem reliable. While we have no reason to doubt its accuracy, we do not guarantee it. ©2023 Voit Real Estate Services, Inc. All Rights Reserved. License #01991785.

# FOR LEASE

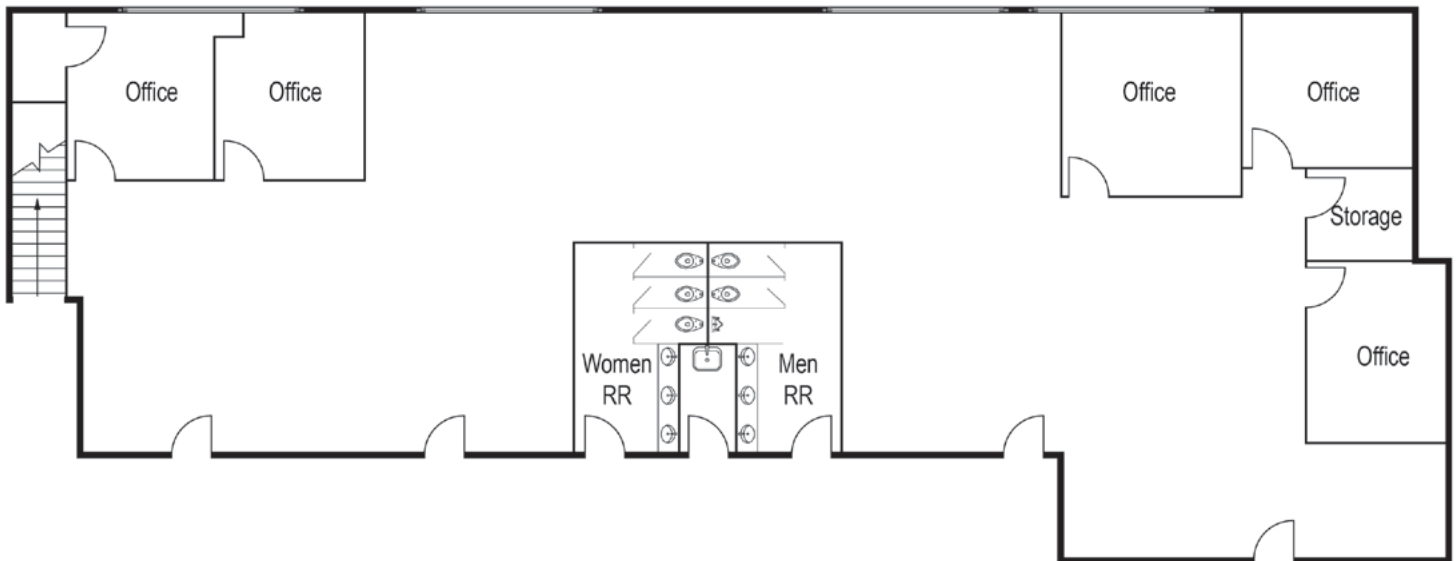
## SIERRA VISTA BUSINESS PARK

100-140 Chaparral Court, Anaheim, CA

±3,816 Square Feet

130 Chaparral Court, Suite 235-246

Anaheim, CA



**MIKE BOOMER**

Vice President

714.935.2344

Lic. #01209091

mboomer@voitco.com

**Voit**

REAL ESTATE SERVICES

2400 E. Katella Avenue, Suite 750, Anaheim, CA 92806 • 714.978.7880 • 714.978.9431 Fax

[www.VoitCo.com](http://www.VoitCo.com)

Licensed as a Real Estate Salesperson by the DRE. The information contained herein has been obtained from sources we deem reliable. While we have no reason to doubt its accuracy, we do not guarantee it. ©2023 Voit Real Estate Services, Inc. All Rights Reserved. License #01991785.

# FOR LEASE

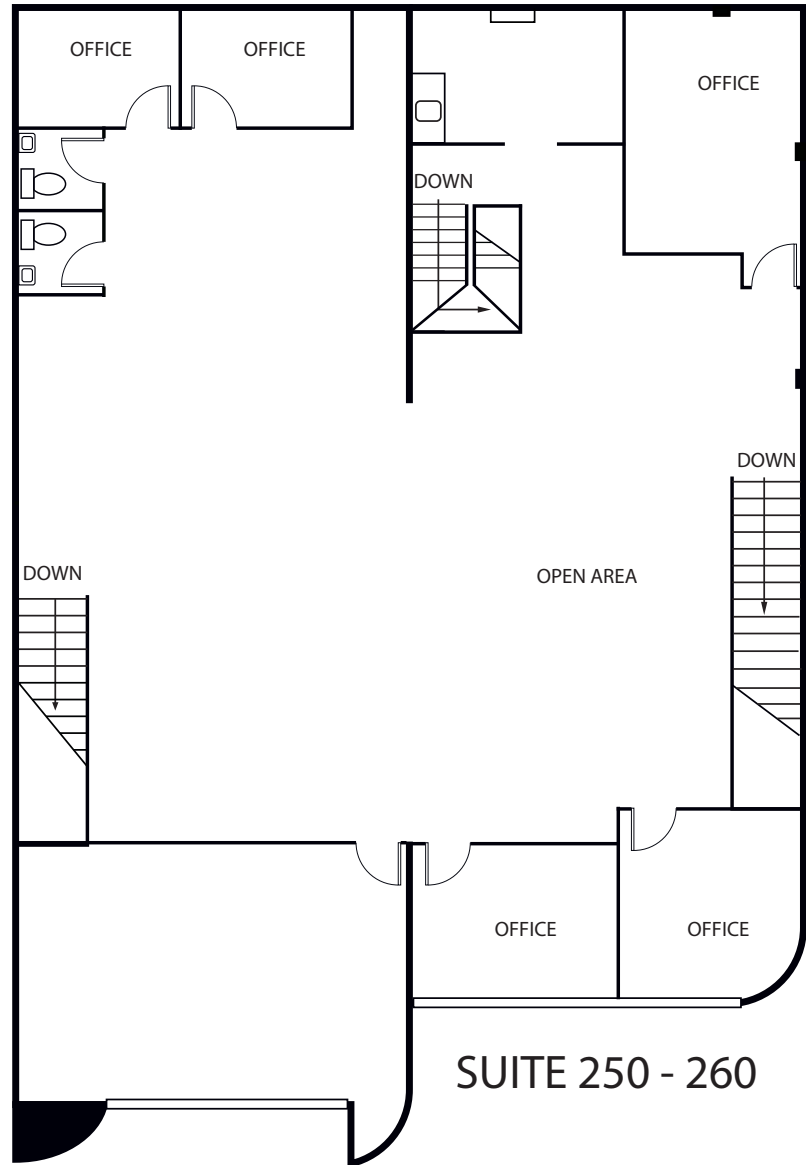
## SIERRA VISTA BUSINESS PARK

100-140 Chaparral Court, Anaheim, CA

±3,695 Square Feet

140 Chaparral Court, Suite 250-260

Anaheim, CA



**MIKE BOOMER**

Vice President

714.935.2344

Lic. #01209091

mboomer@voitco.com

**Voit**

REAL ESTATE SERVICES

2400 E. Katella Avenue, Suite 750, Anaheim, CA 92806 • 714.978.7880 • 714.978.9431 Fax

[www.VoitCo.com](http://www.VoitCo.com)

Licensed as a Real Estate Salesperson by the DRE. The information contained herein has been obtained from sources we deem reliable. While we have no reason to doubt its accuracy, we do not guarantee it. ©2023 Voit Real Estate Services, Inc. All Rights Reserved. License #01991785.

# FOR LEASE

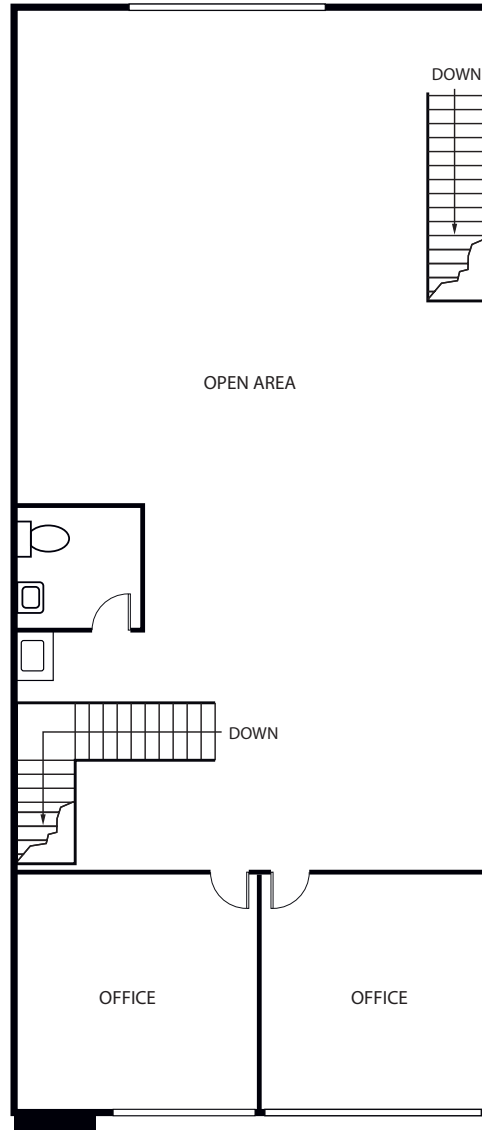
## SIERRA VISTA BUSINESS PARK

100-140 Chaparral Court, Anaheim, CA

±2,068 Square Feet

140 Chaparral Court, Suite 230

Anaheim, CA



**MIKE BOOMER**

Vice President

714.935.2344

Lic. #01209091

mboomer@voitco.com

**Voit**

REAL ESTATE SERVICES

2400 E. Katella Avenue, Suite 750, Anaheim, CA 92806 • 714.978.7880 • 714.978.9431 Fax

[www.VoitCo.com](http://www.VoitCo.com)

Licensed as a Real Estate Salesperson by the DRE. The information contained herein has been obtained from sources we deem reliable. While we have no reason to doubt its accuracy, we do not guarantee it. ©2023 Voit Real Estate Services, Inc. All Rights Reserved. License #01991785.

# FOR LEASE

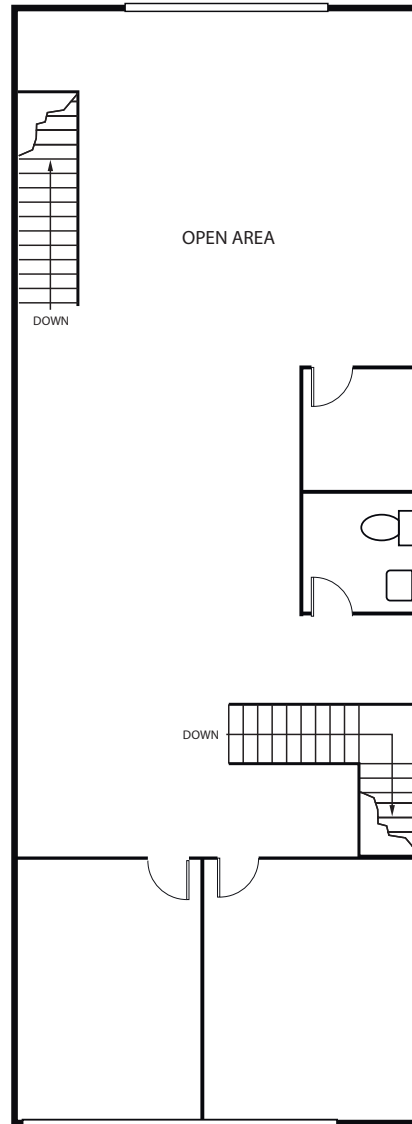
## SIERRA VISTA BUSINESS PARK

100-140 Chaparral Court, Anaheim, CA

±2,064 Square Feet

140 Chaparral Court, Suite 240

Anaheim, CA



**MIKE BOOMER**

Vice President

714.935.2344

Lic. #01209091

mboomer@voitco.com

**Voit**

REAL ESTATE SERVICES

2400 E. Katella Avenue, Suite 750, Anaheim, CA 92806 • 714.978.7880 • 714.978.9431 Fax

[www.VoitCo.com](http://www.VoitCo.com)

Licensed as a Real Estate Salesperson by the DRE. The information contained herein has been obtained from sources we deem reliable. While we have no reason to doubt its accuracy, we do not guarantee it. ©2023 Voit Real Estate Services, Inc. All Rights Reserved. License #01991785.

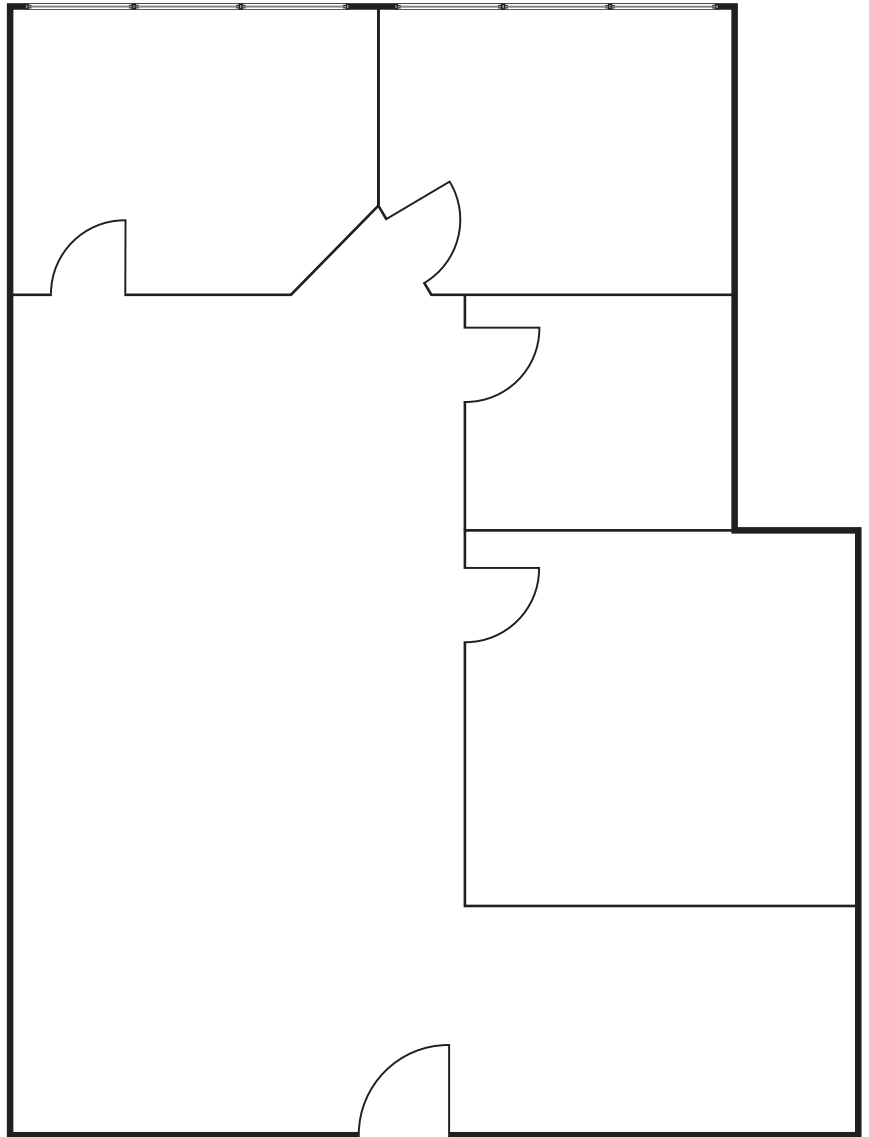
# FOR LEASE

## SIERRA VISTA BUSINESS PARK

100-140 Chaparral Court, Anaheim, CA

**±1,304 Square Feet**

130 Chaparral Court, Suite 235  
Anaheim, CA



**MIKE BOOMER**

Vice President

714.935.2344

Lic. #01209091

mboomer@voitco.com

**Voit**

REAL ESTATE SERVICES

2400 E. Katella Avenue, Suite 750, Anaheim, CA 92806 • 714.978.7880 • 714.978.9431 Fax

[www.VoitCo.com](http://www.VoitCo.com)

Licensed as a Real Estate Salesperson by the DRE. The information contained herein has been obtained from sources we deem reliable. While we have no reason to doubt its accuracy, we do not guarantee it. ©2023 Voit Real Estate Services, Inc. All Rights Reserved. License #01991785.



# FOR LEASE

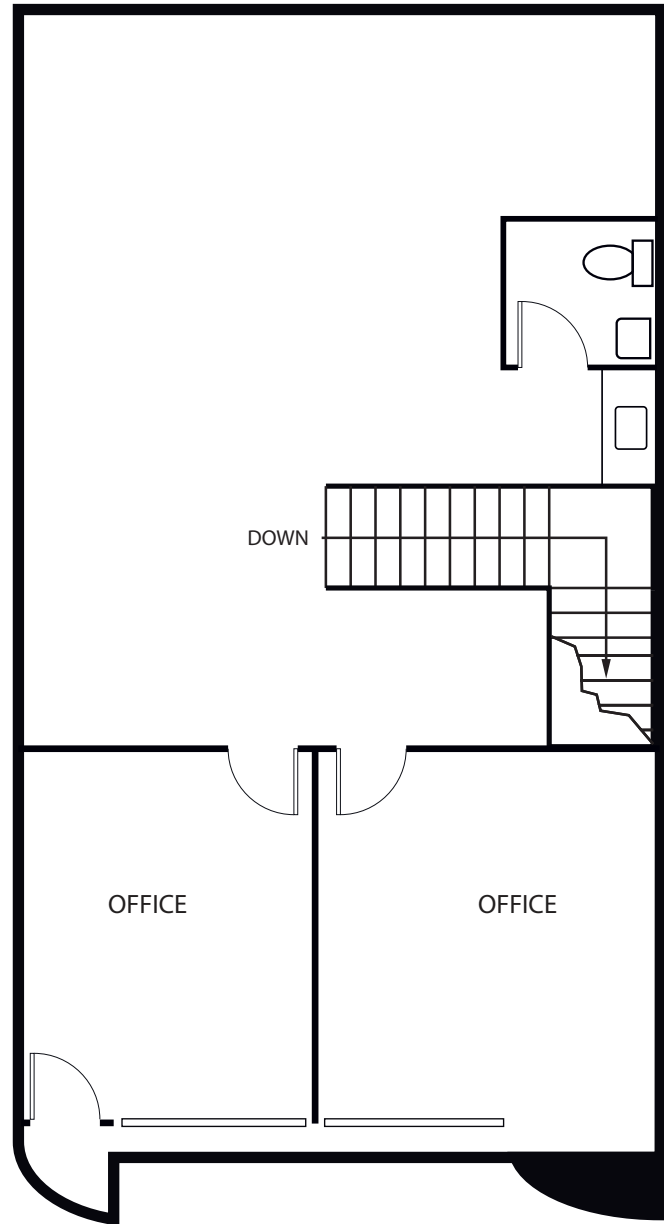
## SIERRA VISTA BUSINESS PARK

100-140 Chaparral Court, Anaheim, CA

±1,292 Square Feet

140 Chaparral Court, Suite 220

Anaheim, CA



**MIKE BOOMER**

Vice President

714.935.2344

Lic. #01209091

mboomer@voitco.com

**Voit**

REAL ESTATE SERVICES

2400 E. Katella Avenue, Suite 750, Anaheim, CA 92806 • 714.978.7880 • 714.978.9431 Fax

[www.VoitCo.com](http://www.VoitCo.com)

Licensed as a Real Estate Salesperson by the DRE. The information contained herein has been obtained from sources we deem reliable. While we have no reason to doubt its accuracy, we do not guarantee it. ©2023 Voit Real Estate Services, Inc. All Rights Reserved. License #01991785.

# FOR LEASE

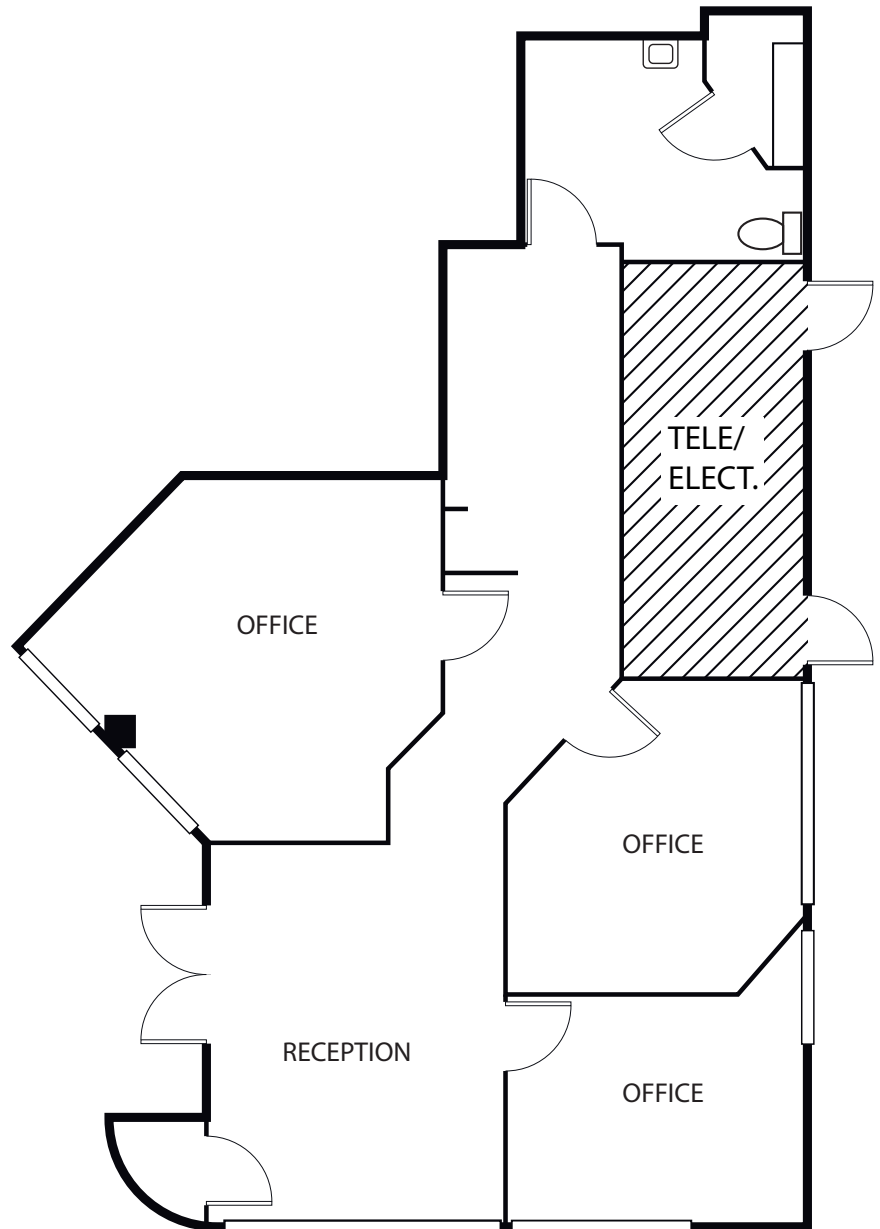
## SIERRA VISTA BUSINESS PARK

100-140 Chaparral Court, Anaheim, CA

±1,096 Square Feet

130 Chaparral Court, Suite 160

Anaheim, CA



**MIKE BOOMER**

Vice President

714.935.2344

Lic. #01209091

mboomer@voitco.com

**Voit**

REAL ESTATE SERVICES

2400 E. Katella Avenue, Suite 750, Anaheim, CA 92806 • 714.978.7880 • 714.978.9431 Fax

[www.VoitCo.com](http://www.VoitCo.com)

Licensed as a Real Estate Salesperson by the DRE. The information contained herein has been obtained from sources we deem reliable. While we have no reason to doubt its accuracy, we do not guarantee it. ©2023 Voit Real Estate Services, Inc. All Rights Reserved. License #01991785.