

FOR LEASE

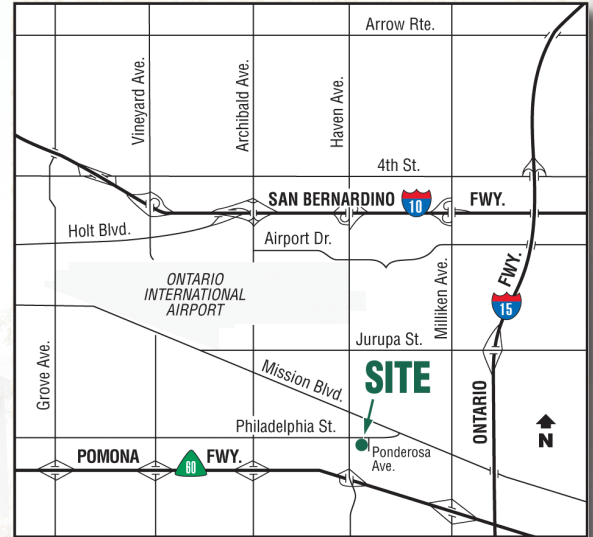
UP TO ±6,572 SQ. FT. SERVICE COMMERCIAL UNITS



3550 PHILADELPHIA STREET | ONTARIO, CA

PROPERTY FEATURES

- Unit 170: ±1,986 SF | Unit 180: ±1,611 SF | Unit 190: ±2,975 SF
- Units May be Combined for up to ±6,572 SF
- Private Offices
- Free Surface Parking
- Building Signage Available
- Fully Fire Sprinklered
- Roll-Up Door Available on Unit 190
- Close Proximity to Ontario International Airport
- Located Near the 60 Freeway at the Haven Ave On/Off Ramp



CONTACT EXCLUSIVE AGENTS FOR DETAILS:

Kyle Kehner, SIOR
909. 942. 4645
kyle.kehner@cushwake.com
License# 01239566

Tim Pimentel, SIOR
909. 942. 4647
tim.pimentel@cushwake.com
License# 01421452

Brice Larson
909. 942. 4642
brice.larson@cushwake.com
License# 02056356

**CUSHMAN & WAKEFIELD**
901 N. Via Piemonte, Suite 200
Ontario, CA 91764
www.cushwake.com
License# 00616335

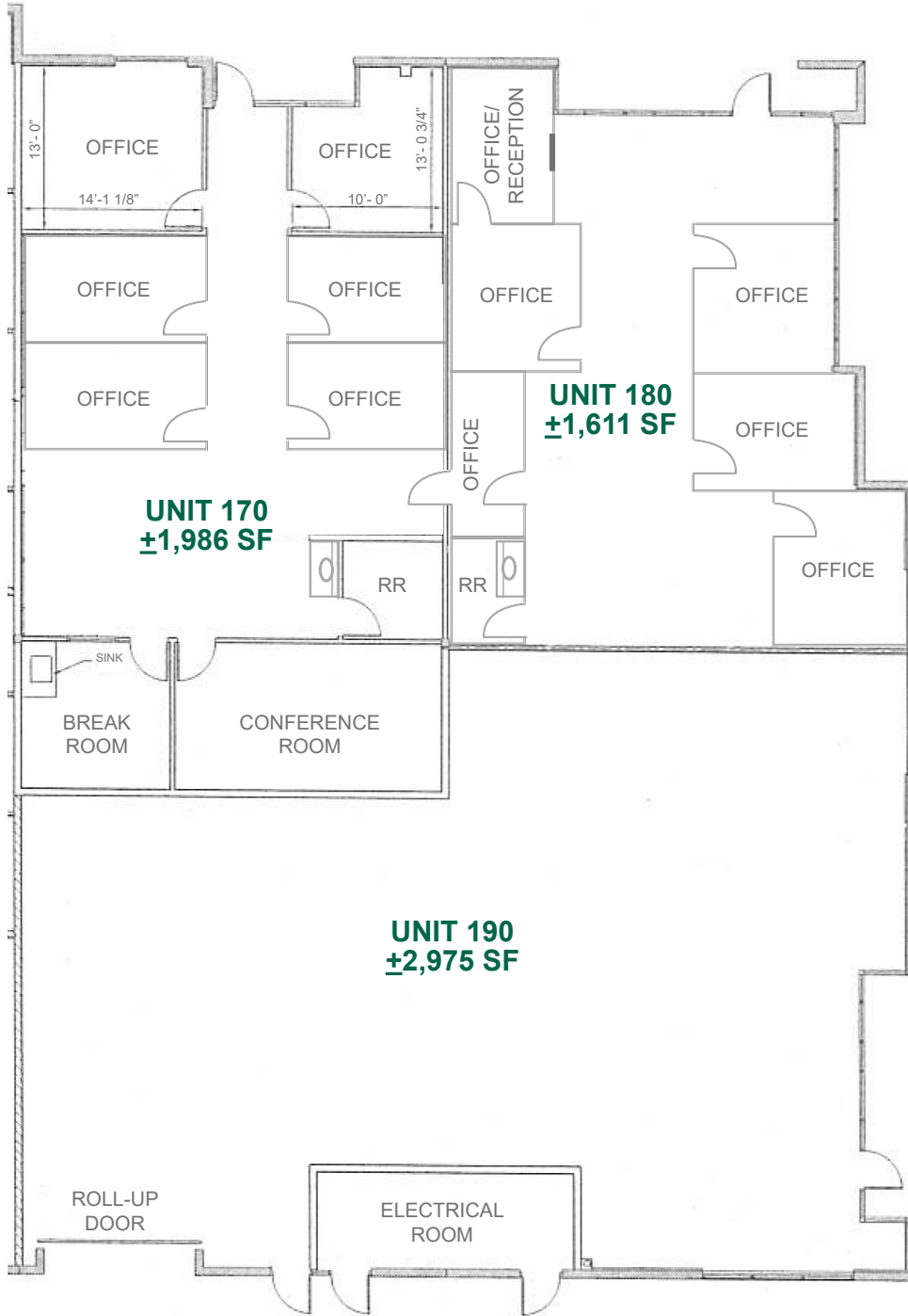
No warranty or representation, express or implied, is made as to the accuracy of the information contained herein, and same is submitted subject to errors, omissions, change of price, rental or other conditions, withdrawal without notice, and to any specific listing conditions, imposed by our principals. This listing shall not be deemed an offer to lease, sublease or sell such property and, in the event of any transaction for such property, no commission shall be earned by or payable to any cooperating broker except if otherwise provided pursuant to the express terms, rate and conditions of C&W's arrangement with its principal, if, as and when such commission (if any) is actually received from such principal.

FOR LEASE

UP TO ±6,572 SQ. FT. SERVICE COMMERCIAL UNITS



Philadelphia Street



Ponderosa Avenue

*Drawing not to scale

Kyle Kehner
909. 942. 4645
kyle.kehner@cushwake.com
License# 01239566

Tim Pimentel
909. 942. 4647
tim.pimentel@cushwake.com
License# 01421452

Brice Larson
909. 942. 4642
brice.larson@cushwake.com
License# 02056356



901 N. Via Piemonte, Suite 200
Ontario, CA 91764
www.cushwake.com
License# 00616335