

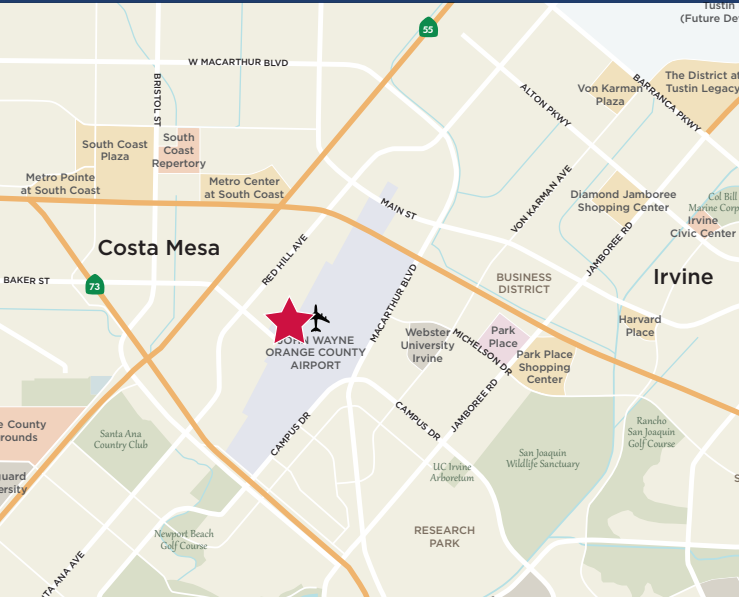


# 3146 & 3152

RED HILL AVENUE

*Costa Mesa, California*

**AVAILABLE FOR LEASE**



## PROPERTY FEATURES

- Great Red Hill Identity
- 4:1000 Parking Ratio
- Minutes from John Wayne Airport
- Excellent Access to The Newport (55), San Diego (405) and Corona Del Mar (73) Freeways
- Suites Ranging From  $\pm$ 1,920 to 3,350 SF
- Asking Rate: \$2.25 FSG

EXCLUSIVELY LISTED BY

**BRIAN GARBUTT**  
 Senior Vice President  
 License ID# 01215482  
 949.727.4722  
 bgarbutt@lee-associates.com

**ALLEN BASSO**  
 Senior Vice President  
 License ID# 01298152  
 949.790.3130  
 abasso@leeirvine.com

**LEE & ASSOCIATES**  
 COMMERCIAL REAL ESTATE SERVICES

**PROPERTY GROUP**  
 MAXIMIZING PROPERTY VALUES™

No warranty or representation is made to the accuracy of the foregoing information. Terms of sale or lease and availability are subject to change or withdrawal without notice.



## AVAILABILITIES

BUILDING	SUITE	SIZE	LEASE RATE	DESCRIPTION
3146 Red Hill	220	±2,403 SF	\$2.25 FSG	Reception, 3 Private Offices, Large Conference Room, Server/Copy Room, Kitchen and Open Area.
3152 Red Hill	200	±3,350 SF	\$2.25 FSG	Reception, Large Open Area, Conference Room, Kitchen, Storage and IT Room.
3152 Red Hill	250	±1,920 SF	\$2.25 FSG	Reception, 3 Private Offices, Conference Room, Data/Storage Room and Open Area.

### EXCLUSIVELY LISTED BY

**ALLEN BASSO**  
 Senior Vice President  
 License ID# 01298152  
 949.790.3130  
 abasso@leeirvine.com

**BRIAN GARBUTT**  
 Senior Vice President  
 License ID# 01215482  
 949.724.4721  
 bgarbutt@lee-associates.com

 **LEE & ASSOCIATES**  
 COMMERCIAL REAL ESTATE SERVICES

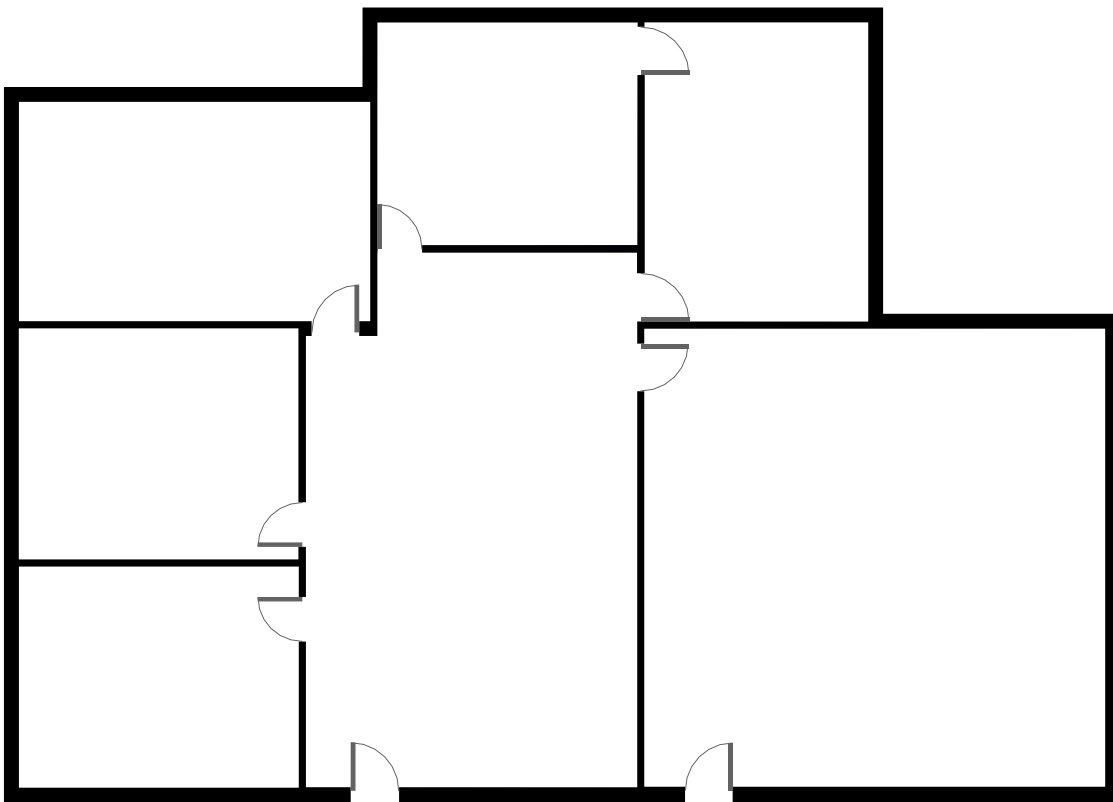
 **PROPERTY GROUP**  
 MAXIMIZING PROPERTY VALUES™

No warranty or representation is made to the accuracy of the foregoing information. Terms of sale or lease and availability are subject to change or withdrawal without notice.

**3146** RED HILL AVENUE  
*Costa Mesa, California*

**SUITE 220**

±2,403 SF



EXCLUSIVELY LISTED BY

**ALLEN BASSO**  
Senior Vice President  
License ID# 01298152  
949.790.3130  
abasso@leeirvine.com

**BRIAN GARBUTT**  
Senior Vice President  
License ID# 01215482  
949.724.4721  
bgarbutt@lee-associates.com

**LEE & ASSOCIATES**  
COMMERCIAL REAL ESTATE SERVICES

**W PROPERTY GROUP**  
MAXIMIZING PROPERTY VALUES™

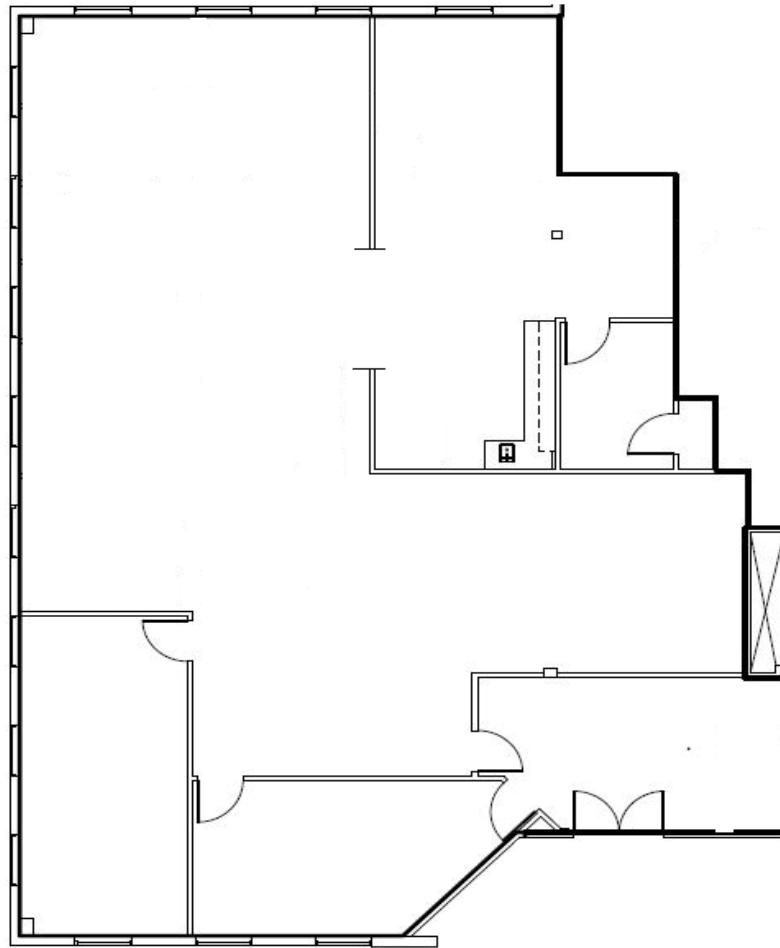
No warranty or representation is made to the accuracy of the foregoing information. Terms of sale or lease and availability are subject to change or withdrawal without notice.

# 3152 RED HILL AVENUE

*Costa Mesa, California*

## SUITE 200

±3,350 SF



EXCLUSIVELY LISTED BY

**ALLEN BASSO**  
Senior Vice President  
License ID# 01298152  
949.790.3130  
abasso@leeirvine.com

**BRIAN GARBUTT**  
Senior Vice President  
License ID# 01215482  
949.724.4721  
bgarbutt@lee-associates.com

**LEE & ASSOCIATES**  
COMMERCIAL REAL ESTATE SERVICES

**PROPERTY GROUP**  
MAXIMIZING PROPERTY VALUES™

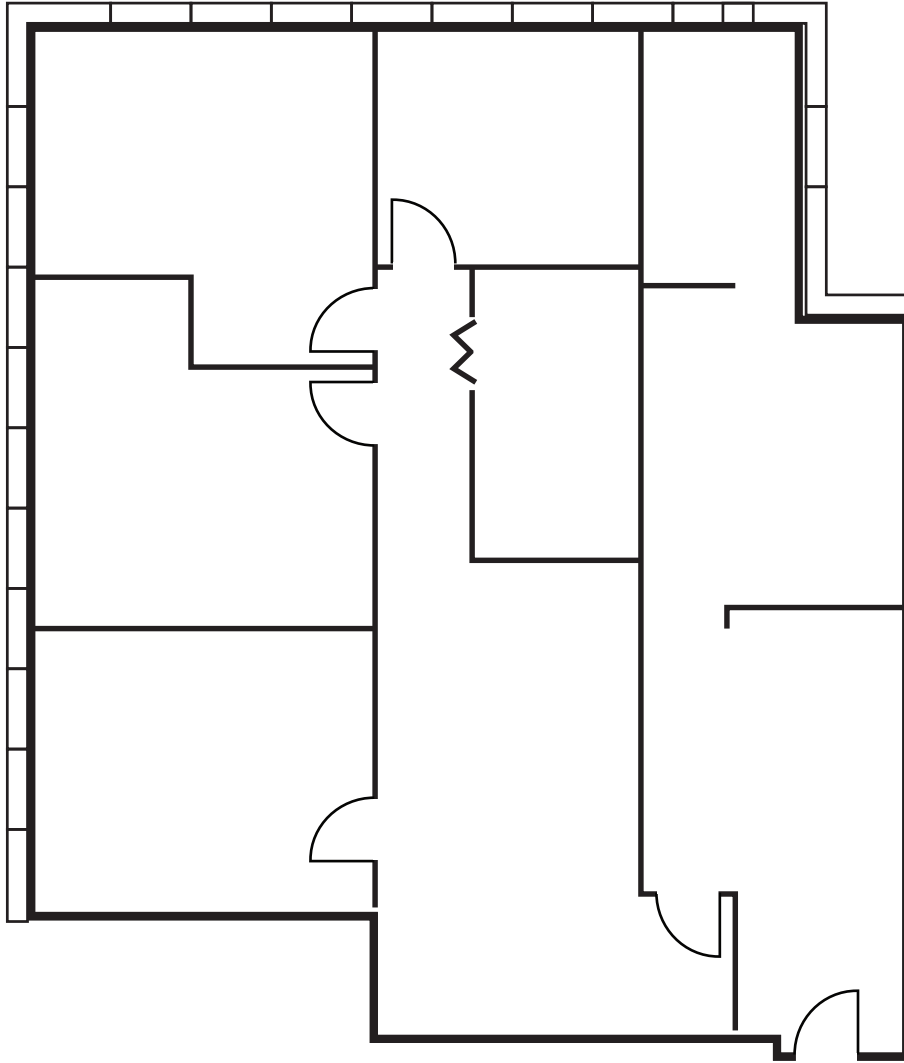
No warranty or representation is made to the accuracy of the foregoing information. Terms of sale or lease and availability are subject to change or withdrawal without notice.

3152 RED HILL AVENUE

*Costa Mesa, California*

## SUITE 250

± 1,920 SF



EXCLUSIVELY LISTED BY

**ALLEN BASSO**  
Senior Vice President  
License ID# 01298152  
949.790.3130  
abasso@leeirvine.com

**BRIAN GARBUTT**  
Senior Vice President  
License ID# 01215482  
949.724.4721  
bgarbutt@lee-associates.com

 **LEE & ASSOCIATES**  
COMMERCIAL REAL ESTATE SERVICES

 **PROPERTY GROUP**  
MAXIMIZING PROPERTY VALUES™

No warranty or representation is made to the accuracy of the foregoing information. Terms of sale or lease and availability are subject to change or withdrawal without notice.