

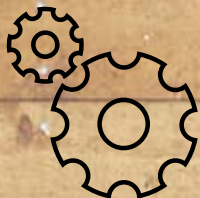
**FIVE FIVE**  
F I V E F I V E  
**FIVE**  
P A R K C E N T E R







**High Image Building in the Heart of Santa Ana**



**Recent Complete Renovation**



**Minutes to Downtown Santa Ana Civic Center, MainPlace Mall and John Wayne Airport**



**Free Surface Parking and Street Parking Available**



**New Spec Suites  
Immediate Occupancy,  
Fiber Ready**



**Immediate Access to the 55, 5, 22, & 405 Freeways**



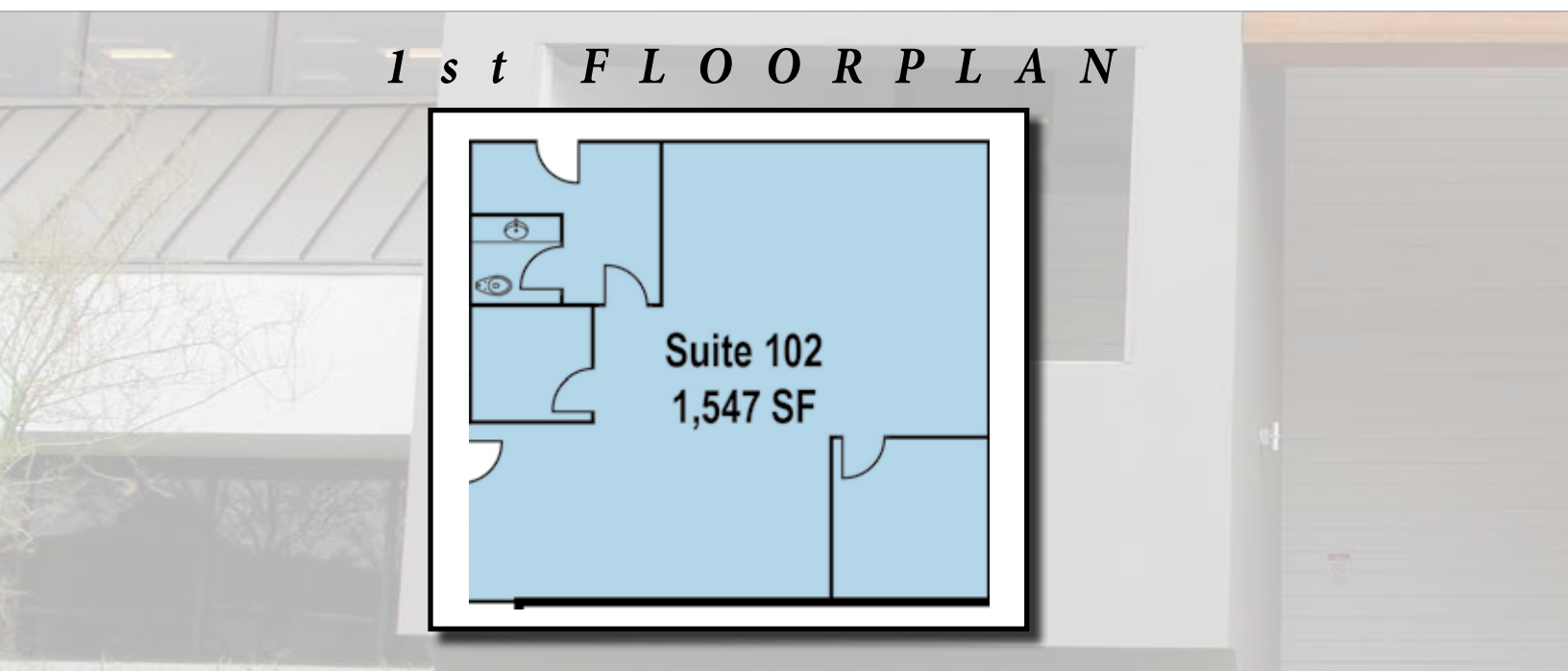




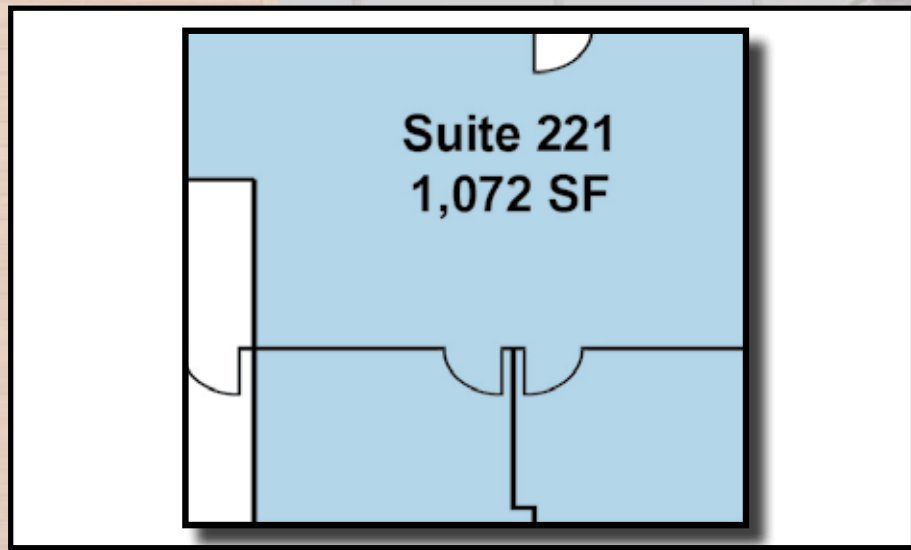
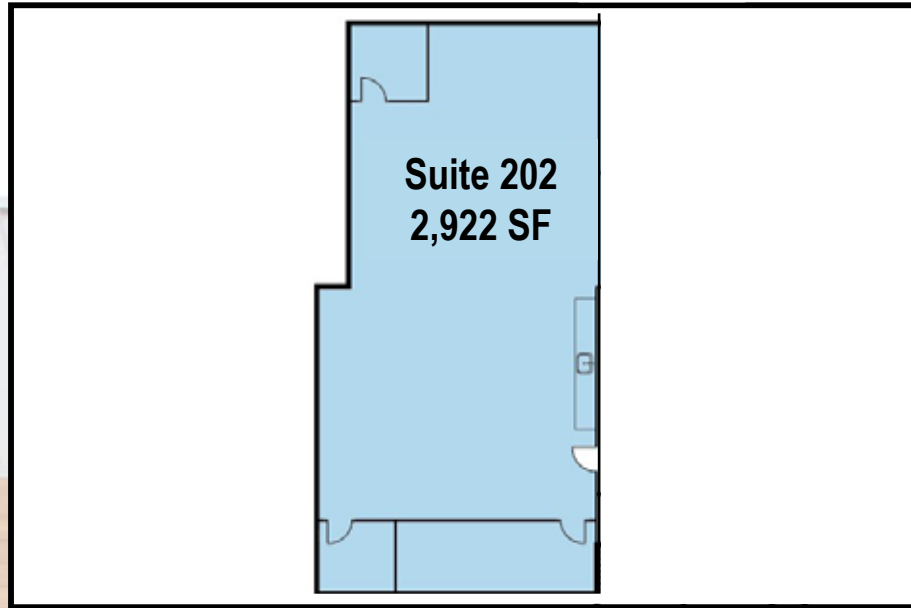
**FIVE**  
FIVE FIVE  
PARK CENTER



Rentable SF	Suite	Description	Rate
1,547 SF	102	2 Private Offices, Open Area, Kitchenette with Sink, Private Interior Restroom & Private Entrance with Immediate Access to the Parking Lot.	\$2.10 FSG
2,922 SF	202	2 Private Offices and Large Conference Room are Full Height Glass, Providing "WOW" Factor and Abundant Natural Light. Open Area for Work Stations & Open Concept Coffee Bar with Sink. Fully furnished optional.	\$1.85 FSG
1,072 SF	221	2 Private Offices & Open Area	\$1.75 FSG



# 2 n d F L O O R P L A N S







# NEARBY AMENITIES

Foothill  
High School

STIN

## RESTAURANTS

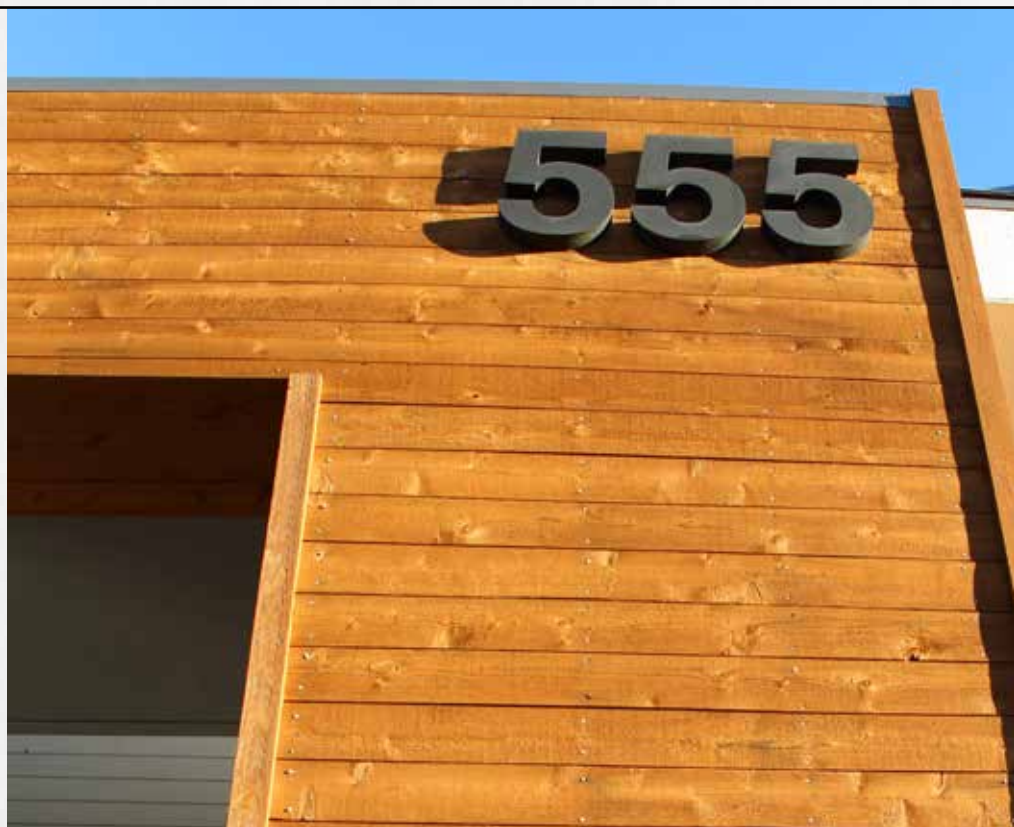
- 1 Subway
- 2 Round Table Pizza
- 3 Zovs Cafe
- 4 Islands
- 5 Claim Jumper Restaurant & Saloon
- 6 El Torito
- 7 Souplantation & Sweet Tomatoes
- 8 Black Angus Steakhouse
- 9 Ono Ono Hawaiian BBQ
- 10 McDonald's
- 11 Del Taco
- 12 Mimi's Cafe
- 13 Wendy's
- 14 Wienerschnitzel
- 15 El Pollo Loco
- 16 Philly's Best
- 17 Starbucks
- 18 Flame Broiler
- 19 Rubio's
- 20 Farmer Boys
- 21 Harbor Seafood Buffet
- 22 Chipotle Mexican Grill
- 23 Wahoo's Fish Taco
- 24 Firehouse Subs
- 25 Dickey's Barbecue Pit
- 26 Jersey Mike's Subs
- 27 McDonald's
- 28 Taco Bell
- 29 El Pollo Loco
- 30 Chipotle Mexican Grill

## BANKS

- 1 California Bank & Trust
- 2 Farmers & Merchants Bank
- 3 Wells Fargo Bank
- 4 California Bank And Trust
- 5 Citizens Business Bank
- 6 Banc of California
- 7 Citibank
- 8 Bank of America

## RETAIL

- 1 Hobby Lobby
- 2 Ganahl Lumber
- 3 CVS Pharmacy
- 4 O'Reilly Auto Parts
- 5 Albertsons
- 6 Target
- 7 Marshalls
- 8 TJ Maxx
- 9 CVS Pharmacy
- 10 Ross Dress For Less
- 11 Superior Grocers







# Voit

REAL ESTATE SERVICES

**CHRIS DRZYZGA**

Vice President

Lic. #01926212

949.263.5303

chrisd@voitco.com

**PAT MCCREDIE**

Senior Associate

Lic. #02014408

949.263.5321

pmccredie@voitco.com

**555 PARK CENTER DRIVE  
SANTA ANA, CA**

