

CHAPMAN MANOR EAST

OFFICE FOR LEASE

— 5334 E. Chapman Avenue, Orange, CA

LEE & ASSOCIATES

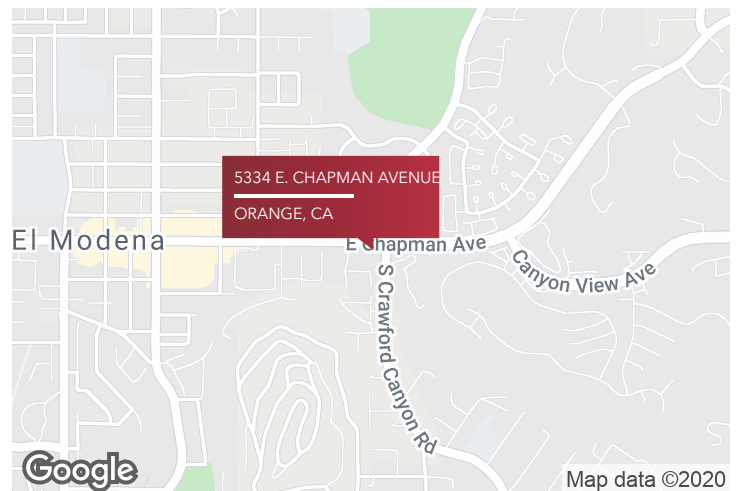
COMMERCIAL REAL ESTATE SERVICES

±8,383 SF



PROPERTY HIGHLIGHTS

- Suite 100: 3,500 SF
- Suite 200: 1,600 SF *
- Suite 210: 1,600 SF *
- Suite 250: 1,100 SF *
- * Entire Second Floor (Suites 200, 210, & 250) can be leased: 5,000 SF
- Asking \$1.35 - \$1.50 PSF Modified Gross
- Ideal for CPA's, Attorneys, Insurance, and Business Professionals
- Motivated Ownership
- Ample Free Surface Parking
- Flexible Terms
- Close to Retail, Restaurant, and Banking
- Excellent Access 5, 55, 22 Freeway and 261 Toll Road



[CLICK FOR WEBSITE](#)

Erik Thompson

PRINCIPAL

+714.564.7151

ethompson@lee-associates.com

DRE# 01458292

1004 West Taft Avenue, Suite 150 | Orange, CA 92865 | 714.647.9100 | lee-associates.com/orange/ | DRE# 01011260

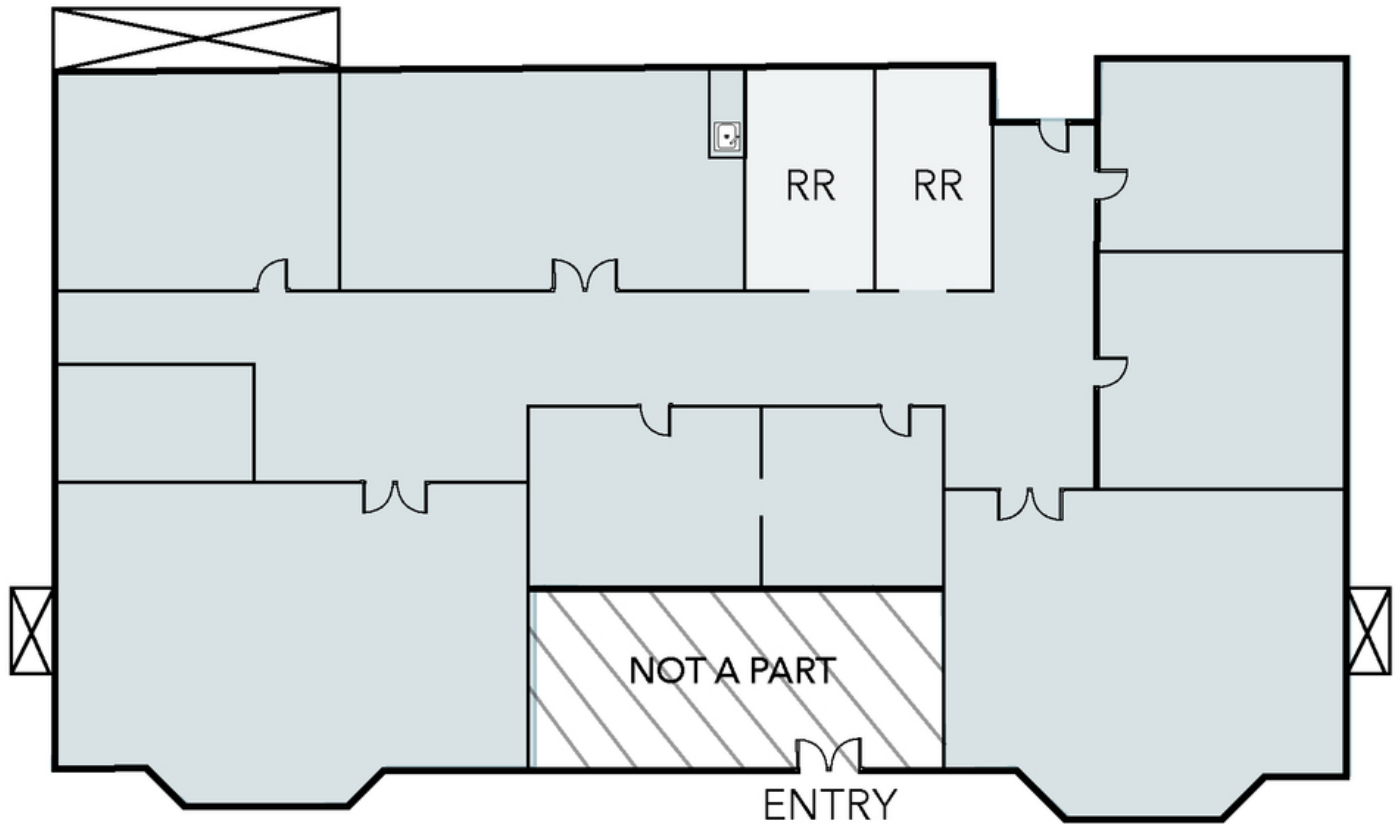


All information furnished regarding property for sale, rental or financing is from sources deemed reliable, but no warranty or representation is made to the accuracy thereof and same is submitted to errors, omissions, change of price, rental or other conditions prior to sale, lease or financing or withdrawal without notice. No liability of any kind is to be imposed on the broker herein.

FLOOR PLAN - SUITE 100

— 5334 E. Chapman Avenue, Orange, CA

SUITE 100 | 3,500 SF



1 SUITE 100: 3,500 SF

(NOT TO SCALE)

Erik Thompson

PRINCIPAL

+714.564.7151

ethompson@lee-associates.com

DRE# 01458292

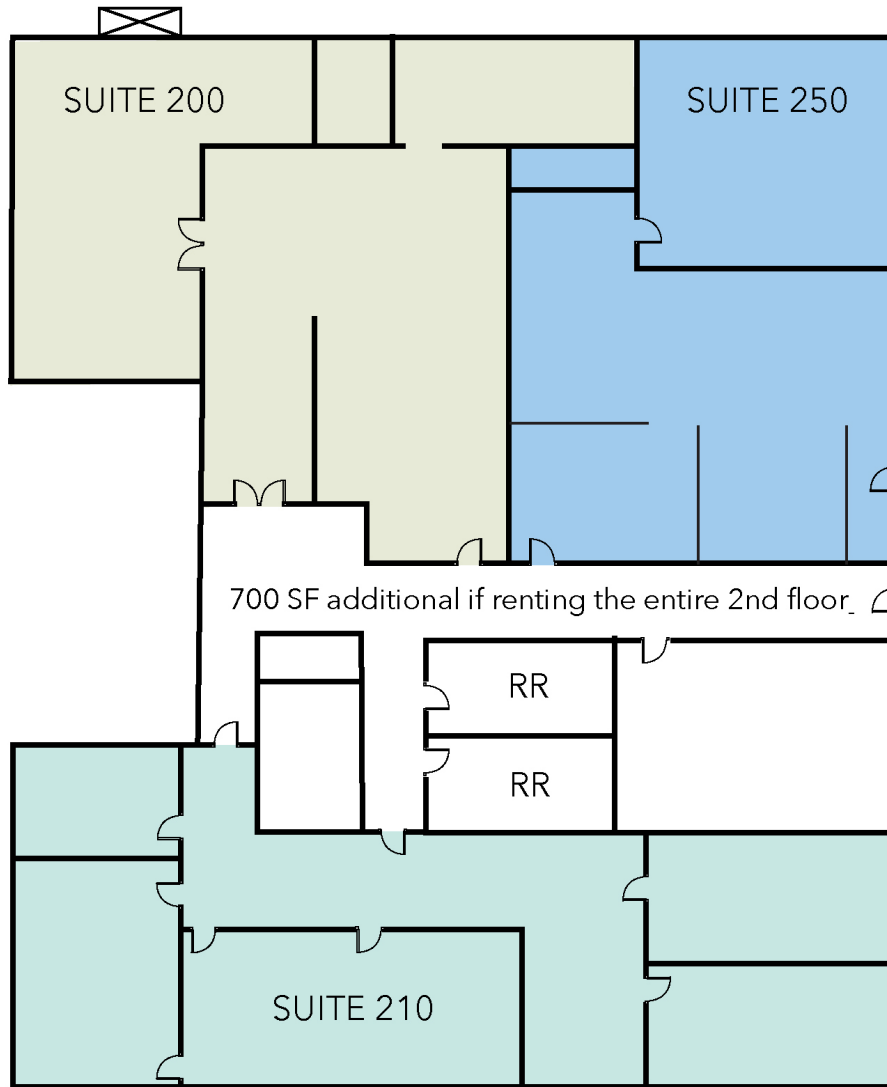
FLOOR PLAN - SECOND FLOOR

— 5334 E. Chapman Avenue, Orange, CA

±8,383 SF

SUITE 200 | 1,600 SF

SUITE 250 | 1,100 SF



SUITE 210 | 1,100 SF

1 | SUITE 200: 1,600 SF * | SUITE 210: 1,600 SF * | SUITE 250: 1,100 SF * | * ENTIRE FLOOR: 5,000 SF
Floor Plan Information

(NOT TO SCALE)

Erik Thompson

PRINCIPAL

+714.564.7151

ethompson@lee-associates.com

DRE# 01458292

CHAPMAN MANOR EAST
REGIONAL MAP

— 5334 E. Chapman Avenue, Orange, CA

±8,383 SF



Erik Thompson

PRINCIPAL

+714.564.7151

ethompson@lee-associates.com

DRE# 01458292