

AVAILABILITY

Voit

REAL ESTATE SERVICES

421 Commercial Way | La Habra, CA 90631

421 Commercial Way

Address	Suite	Total Size ¹ Sq. Ft.	Office Size ¹ Sq. Ft.	Asking Rate Per Month Mod. Gross	Comments
421 Commercial Way	B	1,300	None	\$1.20 PSF \$1,560.00 per mo.	100% Warehouse with ground level loading door. No restroom. Available with 30 day notice.
421 Commercial Way	CD	4,100	±500	\$1.20 PSF \$4,920.00 per mo.	3 private offices, 3 restrooms, bonus mezzanine, ad large warehouse with 2 ground level loading doors. Available 10/1/21.
421 Commercial Way	BCD	5,400	±500	\$1.20 PSF \$6,480.00 per mo.	3 private offices, 3 restrooms, bonus mezzanine, ad large warehouse with 2 ground level loading doors. Available 10/1/21.

¹Approximate total square footage

HAYDEN SOCCI, CCIM

Senior Vice President

714.935.2379

hsocci@voitco.com

Lic #01705038

Property Touring Guidelines >

2400 East Katella Avenue | Suite 750 | Anaheim, CA 92806 | 714.978.7880 | 714.276.0664 FAX | Lic #01991785 | www.voitco.com

The information contained herein has been obtained from sources we deem reliable. While we have no reason to doubt its accuracy, we do not guarantee it.
© 2021 Voit Real Estate Services, Inc. All Rights Reserved. Real People. Real Solutions.® is a registered trademark of Voit Real Estate Services.

Real People. Real Solutions.®

FOR LEASE

421 Commercial Way | La Habra, CA 90631

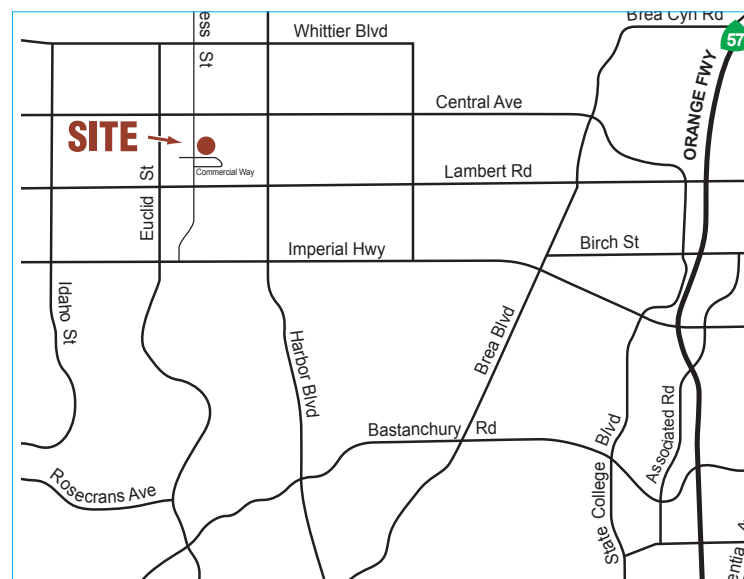
Voit

REAL ESTATE SERVICES



PROJECT FEATURES

- ±1,300 - 5,400 Sq. Ft.
- Multi-Tenant Units
- Separately Metered
- 20' Foot Warehouse Clearance (rare)
- Ground Level Loading
- Bonus Mezzanine
- Multiple Restrooms (plumbing stubbed for additional restrooms)
- Pride of Ownership Property



HAYDEN SOCCI, CCIM

Senior Vice President

714.935.2379

hsocci@voitco.com

Lic #01705038

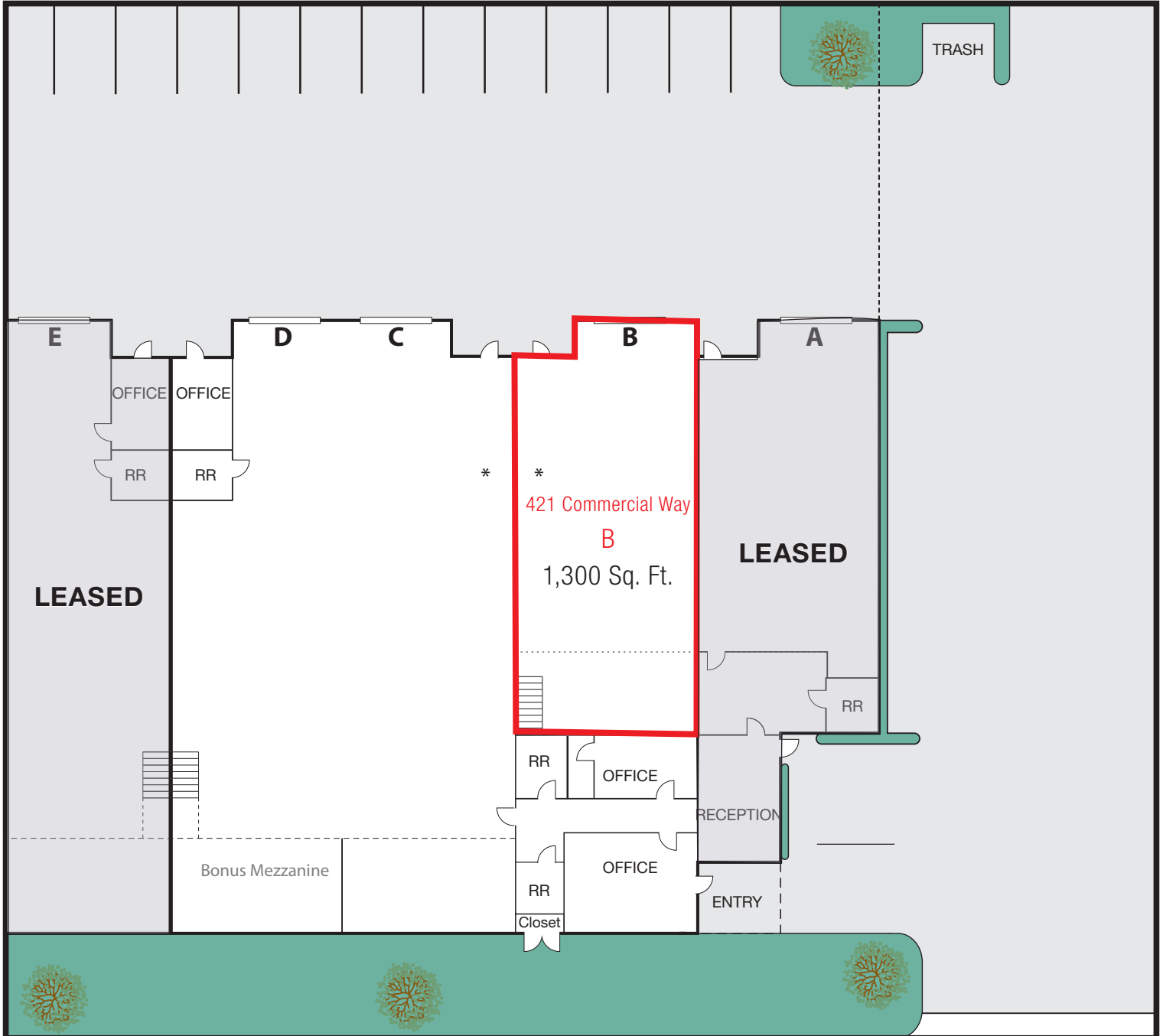
2400 East Katella Avenue | Suite 750 | Anaheim, CA 92806 | 714.978.7880 | 714.276.0664 FAX | Lic #01991785 | www.voitco.com

AVAILABILITY

421 Commercial Way | La Habra, CA 90631
Suite B | 1,300 Sq. Ft.

Voit

REAL ESTATE SERVICES



Please note floor plan not to scale.

* Plumbing in place for restroom

HAYDEN SOCCI, CCIM

Senior Vice President

714.935.2379

hsocci@voitco.com

Lic #01705038

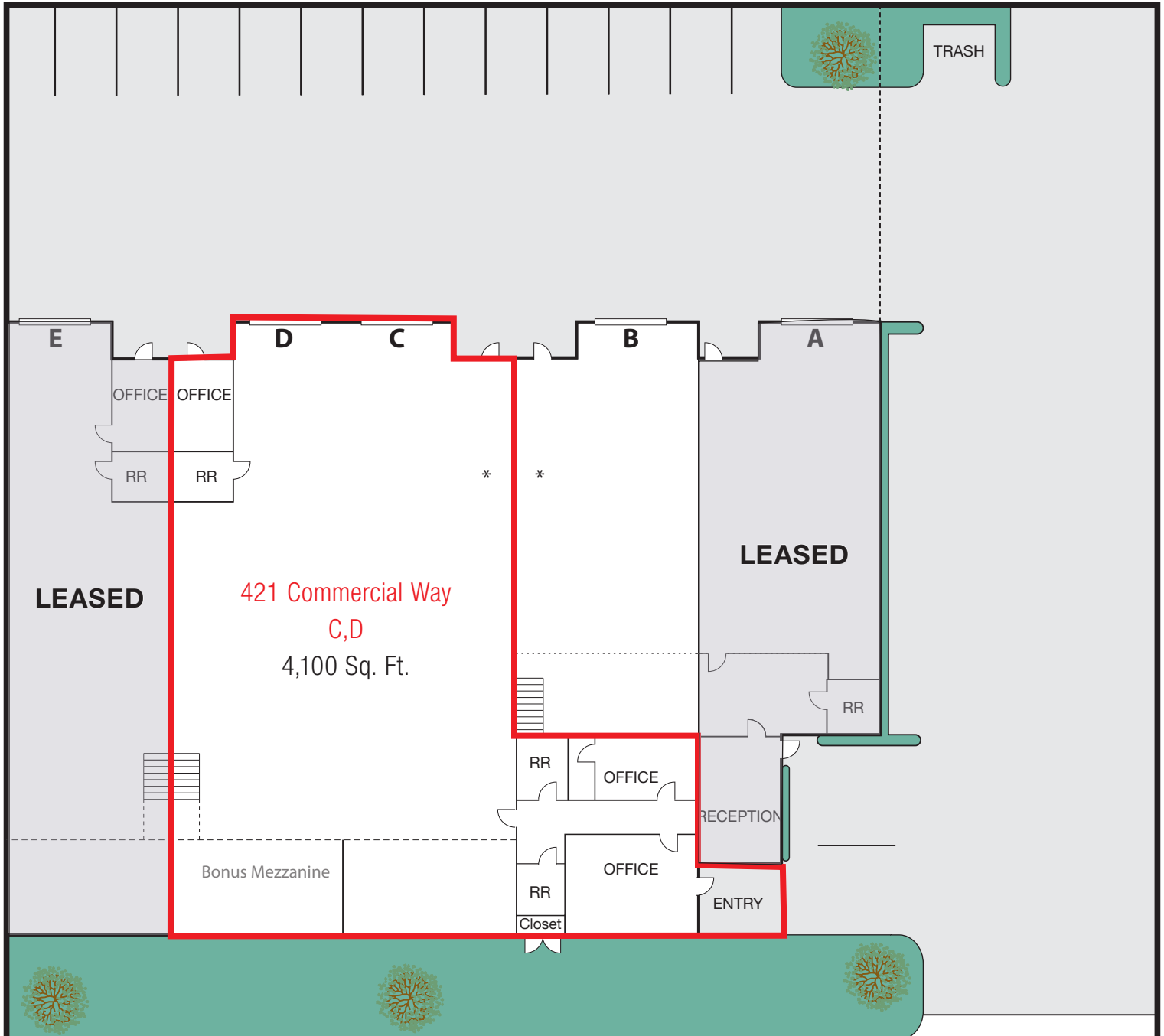
2400 East Katella Avenue | Suite 750 | Anaheim, CA 92806 | 714.978.7880 | 714.276.0664 FAX | Lic #01991785 | www.voitco.com

AVAILABILITY

421 Commercial Way | La Habra, CA 90631
Suite CD | 4,100 Sq. Ft.

Voit

REAL ESTATE SERVICES



Please note floor plan not to scale.

* Plumbing in place for restroom

HAYDEN SOCCI, CCIM

Senior Vice President

714.935.2379

hsocci@voitco.com

Lic #01705038

2400 East Katella Avenue | Suite 750 | Anaheim, CA 92806 | 714.978.7880 | 714.276.0664 FAX | Lic #01991785 | www.voitco.com

The information contained herein has been obtained from sources we deem reliable. While we have no reason to doubt its accuracy, we do not guarantee it.
© 2021 Voit Real Estate Services, Inc. All Rights Reserved. Real People. Real Solutions.® is a registered trademark of Voit Real Estate Services.

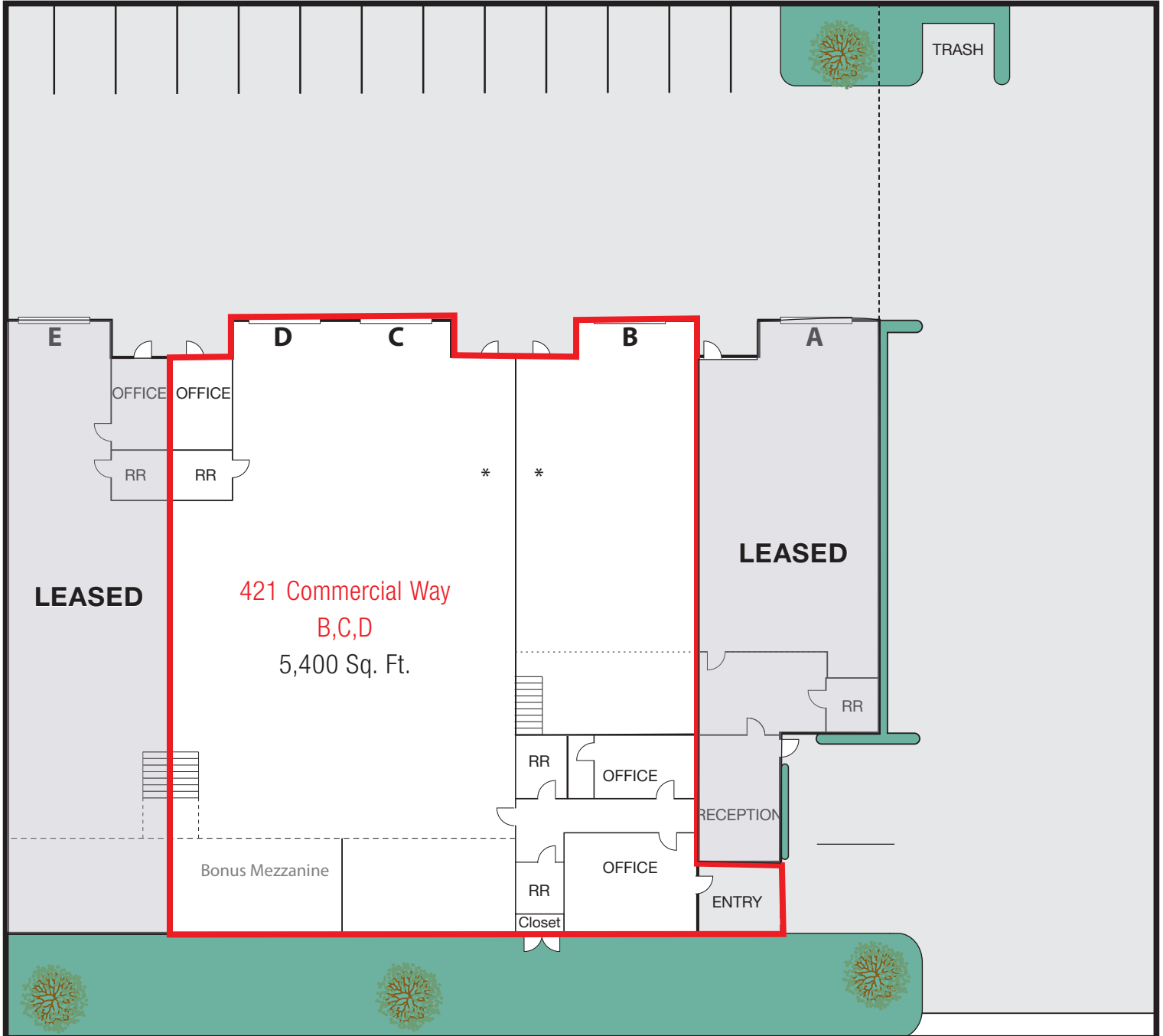
Real People. Real Solutions.®

AVAILABILITY

421 Commercial Way | La Habra, CA 90631
Suite BCD | 5,400 Sq. Ft.

Voit

REAL ESTATE SERVICES



Please note floor plan not to scale.

* Plumbing in place for restroom

HAYDEN SOCCI, CCIM

Senior Vice President

714.935.2379

hsocci@voitco.com

Lic #01705038

2400 East Katella Avenue | Suite 750 | Anaheim, CA 92806 | 714.978.7880 | 714.276.0664 FAX | Lic #01991785 | www.voitco.com